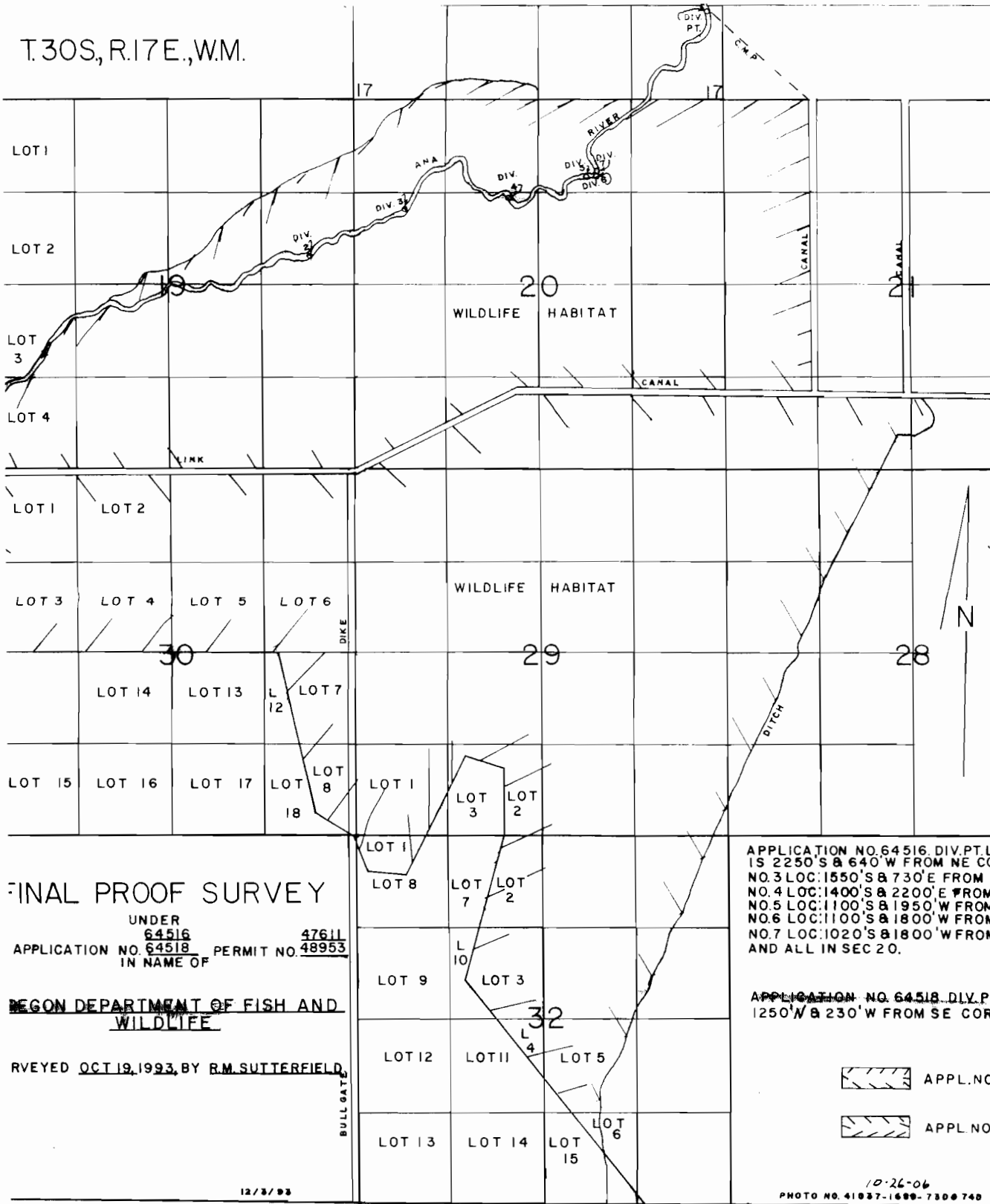


T.30S, R.17E., W.M.



FINAL PROOF SURVEY

UNDER

64516

47611

APPLICATION NO. 64518

PERMIT NO. 48953

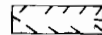
IN NAME OF

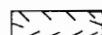
OREGON DEPARTMENT OF FISH AND WILDLIFE

REVIEWED OCT 19, 1993, BY R.M. SUTTERFIELD

APPLICATION NO. 64516, DIV. PT. L 1S 2250'S & 640' W FROM NE COR. NO. 3 LOC: 1550'S & 730'E FROM N. NO. 4 LOC: 1400'S & 2200'E FROM N. NO. 5 LOC: 1100'S & 1950' W FROM N. NO. 6 LOC: 1100'S & 1800' W FROM N. NO. 7 LOC: 1020'S & 1800' W FROM N. AND ALL IN SEC. 20.

APPLICATION NO. 64518, DIV. P1 1250' N & 230' W FROM SE COR.

 APPL. NO.

 APPL. NO.