

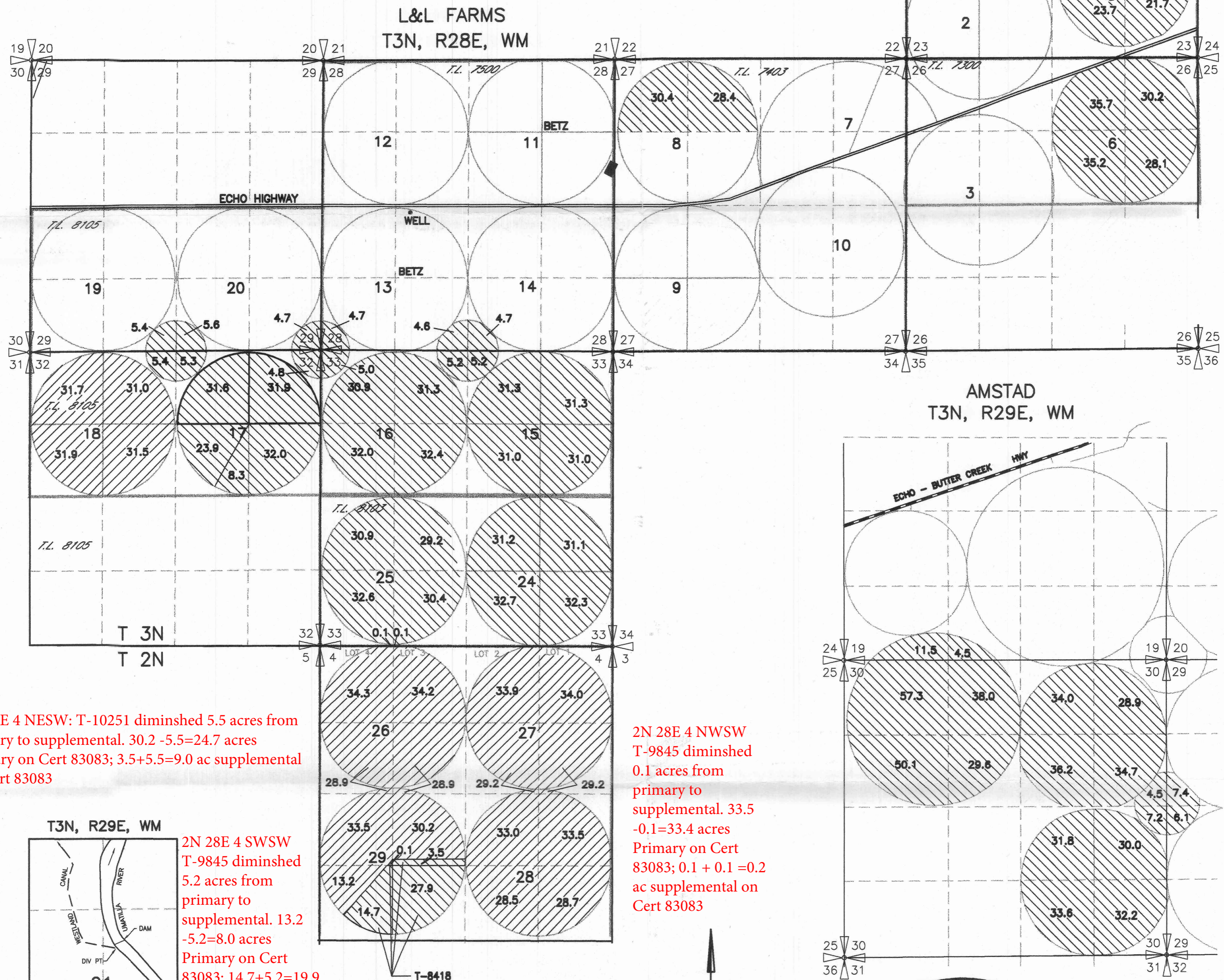
**Primary and Supplemental Irrigation
Certificate 83083; see modifications
below for T2N R28E 4**

**FINAL PROOF MAP
FOR
PERMIT 48968
L&L FARMS & TONY AMSTAD
UMATILLA COUNTY**



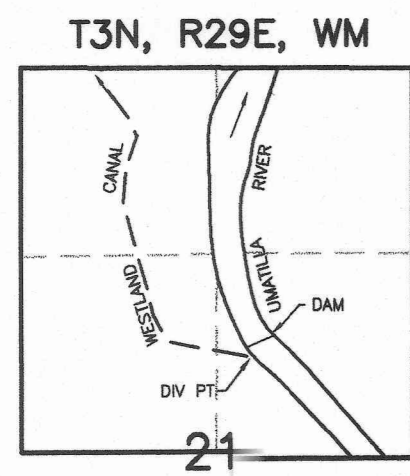
Tony Amstad
TONY AMSTAD 7-14-04 DATE

Robert Levy
ROBERT LEVY July 7/20/04 DATE



2N 28E 4 NESW: T-10251 diminished 5.5 acres from primary to supplemental. 30.2 - 5.5 = 24.7 acres Primary on Cert 83083; 3.5 + 5.5 = 9.0 ac supplemental on Cert 83083

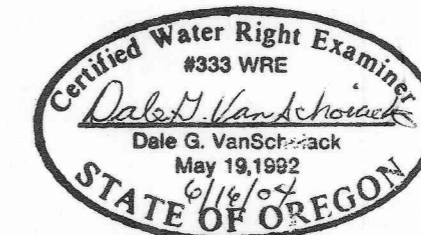
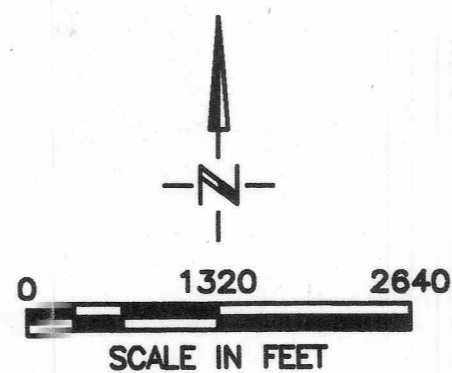
2N 28E 4 NWSW T-9845 diminished 0.1 acres from primary to supplemental. 33.5 - 0.1 = 33.4 acres Primary on Cert 83083; 0.1 + 0.1 = 0.2 ac supplemental on Cert 83083



2N 28E 4 SWSW T-9845 diminished 5.2 acres from primary to supplemental. 13.2 - 5.2 = 8.0 acres Primary on Cert 83083; 14.7 + 5.2 = 19.9 ac supplemental on Cert 83083

DIV PT LCT N.76°45'56"E. 2913.19' FROM W.1/4 COR. SEC 21

COBU MAP # 0141



RECEIVED

JUL 23 2004

WATER RESOURCES DEPT
SALEM, OREGON

NOTE: THE PURPOSE OF THIS MAP IS TO IDENTIFY THE APPROXIMATE LOCATION OF THE WATER RIGHT. IT IS NOT INTENDED TO PROVIDE INFORMATION RELATIVE TO THE LOCATION OF PROPERTY OWNERSHIP BOUNDARY LINES.

Location of 5.5 acres of primary IR changed to supplemental IR in the
NESW, T2N R28E S4, Transfer T-10251, on Cert 81417.

Superseding right = 83083

