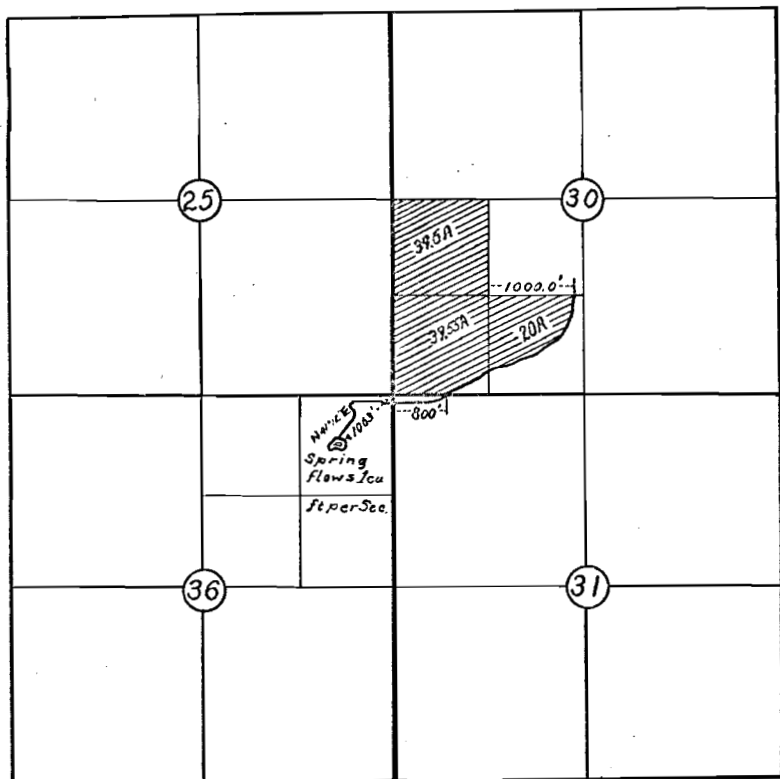


T28S-R14E.W.M.

T28S R15E.W.M.



Scale 2"=1 Mile.

I S.A. Mushen, of Lakeview Oregon do hereby certify that this from notes taken during an actual survey made by me on July, it correctly represents the works described in the accompanying together with the location of streams and other ditches in the immediate and has written thereon the area in each smallest legal subdivision proposed to irrigate.

S. G. Mushen

OFFICE OF STATE ENGINEERS
 RECEIVED
 AUG 4 1914
 SALT LAKE CITY, UTAH

Application No 1595
 Permit No. 773

773
 24831