

ENGINEER

DK & ASSOCIATES, INC.
ATTN: DAVID KASPER
PO BOX 12766
SALEM, OR 97309

PH: 503.606.3006
FAX: 503.606.3007

OWNER

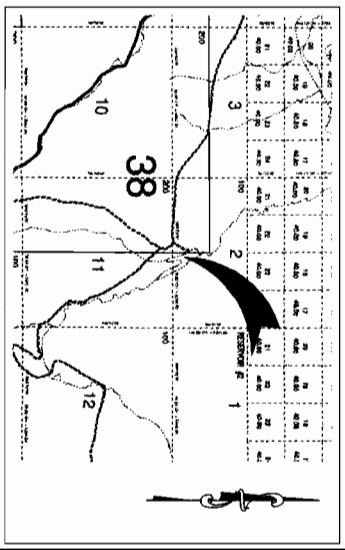
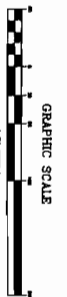
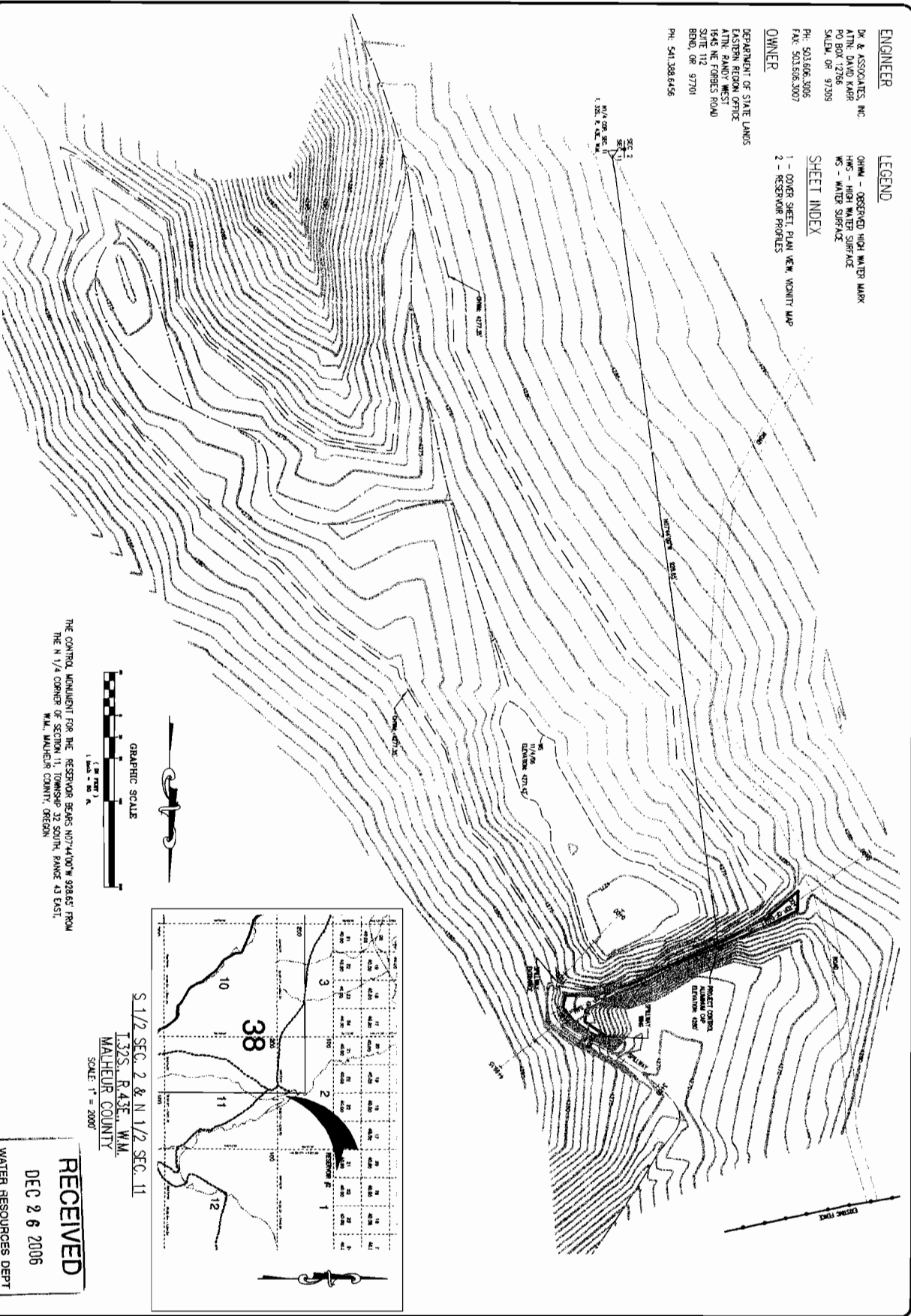
DEPARTMENT OF STATE LANDS
EASTERN REGION OFFICE
ATTN: RANDY WEST
1946 NE FORBES ROAD
SUITE 112
BEHO, OR 97701
PH: 541.388.6456

LEGEND

OWM - OBSERVED HIGH WATER MARK
HW - HIGH WATER SURFACE
WS - WATER SURFACE

SHEET INDEX

1 - COVER SHEET, PLAIN VIEW VICINITY MAP
2 - RESERVOIR PROFILES



THE CONTROL MONUMENT FOR THE RESERVOIR BEARS NORTH 41° 00' W 328.65' FROM THE N 1/4 CORNER OF SECTION 11, TOWNSHIP 32 SOUTH, RANGE 43 EAST, MALHEUR COUNTY, OREGON.

RECEIVED
DEC 26 2006
WATER RESOURCES DEPT
SALEM, OREGON

DATE	DATE	DATE	DATE
1	2	3	4
SHEET	OF	SHEETS	TOTAL
1	2		
JOB NUMBER	06114		

MALHEUR COUNTY
ASBUILT SURVEY RESERVOIR #2 - APP. NO. _____
S 1/2 SEC. 2, T.32S., R.43E., W.M. - MALHEUR COUNTY

DK & Associates
CIVIL ENGINEERING & LAND SURVEYING
PO BOX 12766
SALEM, OR 97309
PH: 503.606.3006
FAX: 503.606.3007