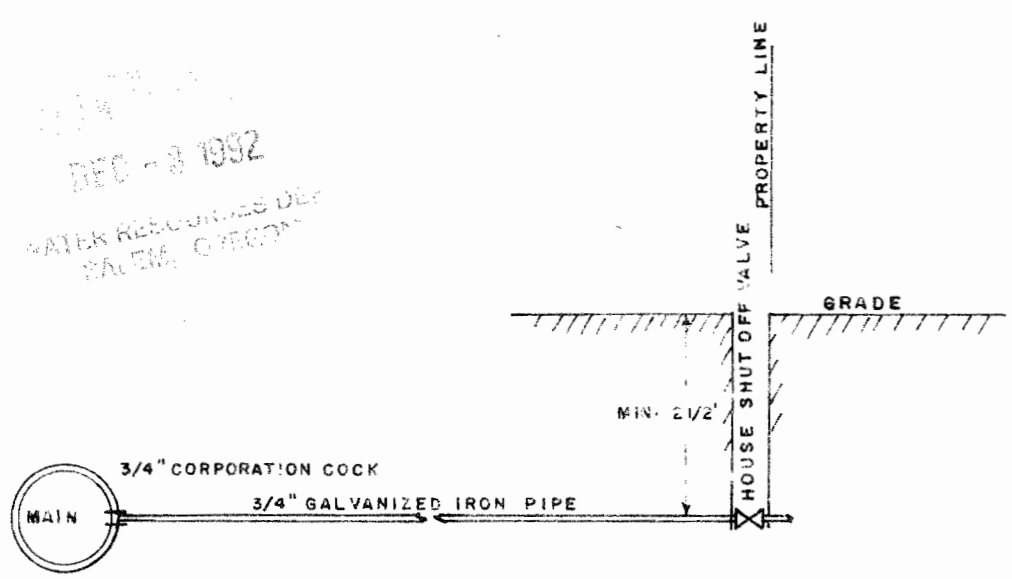
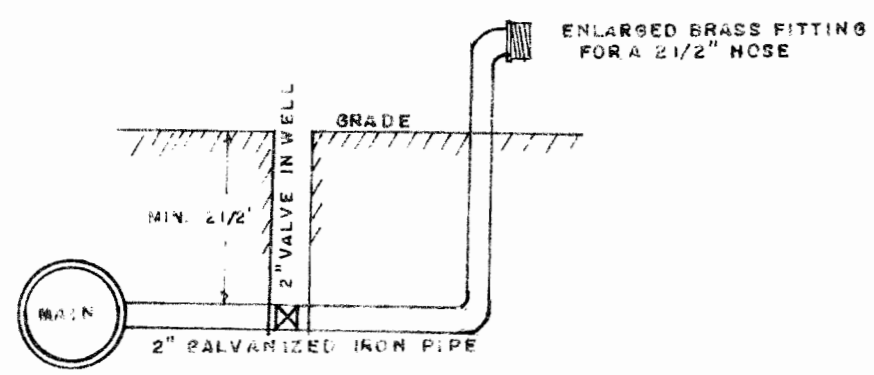


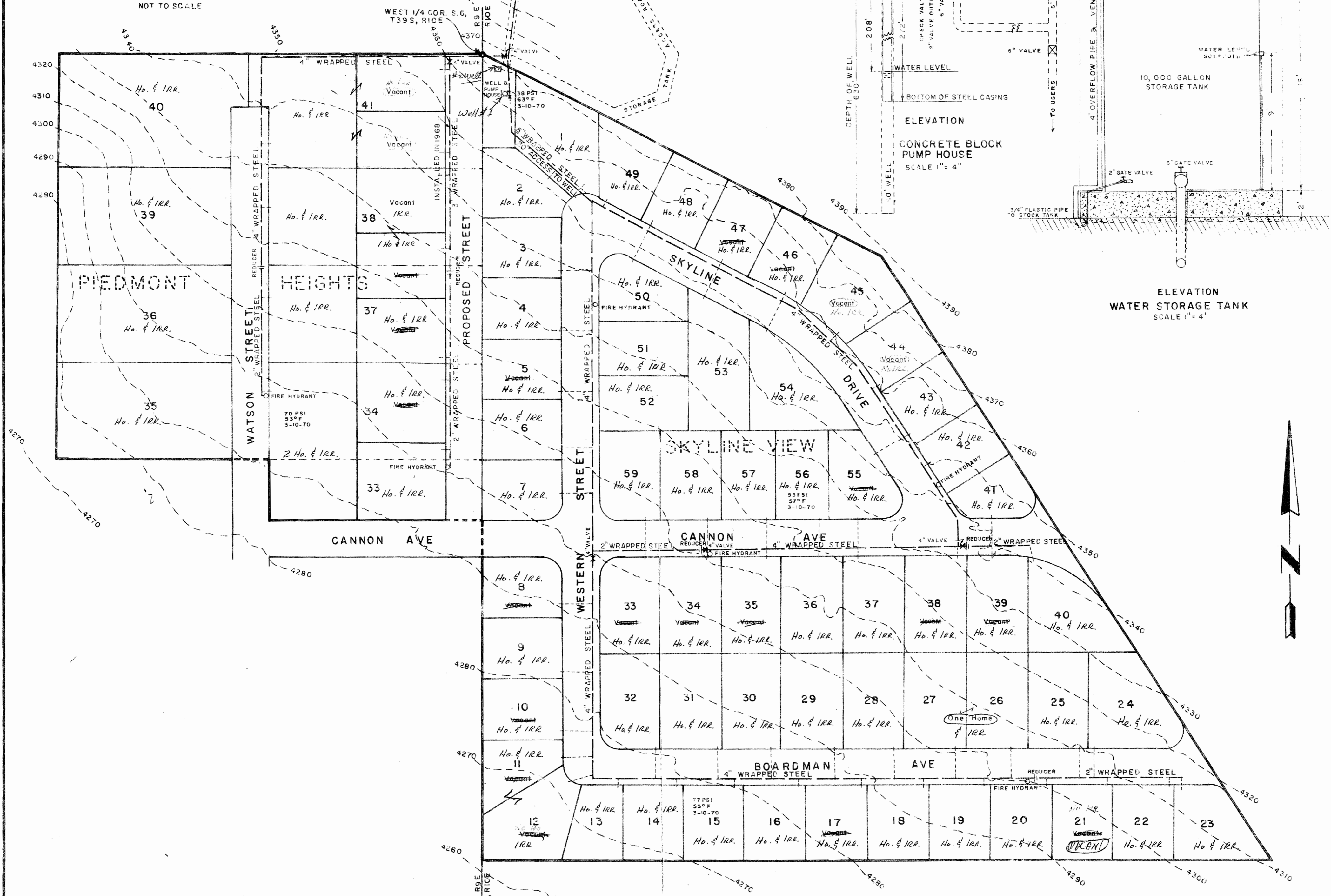
# BASE MAP OF SKYLINE VIEW WATER SYSTEM



TYPICAL HOUSE CONNECTION  
NOT TO SCALE



TYPICAL FIRE HYDRANT  
NOT TO SCALE



PRESENT USERS - 50 HOMES - APPROX. 200 PEOPLE  
 MAXIMUM FUTURE USERS - 73 HOMES - APPROX. 300 PEOPLE  
 PRESENT CONSUMPTION - 20,000 G.P.D. (ESTIMATED)  
 MAXIMUM FUTURE CONSUMPTION - 30,000 G.P.D. (ESTIMATED)  
 PUMP CAPACITY - APPROX. 0.5 C.F.S.  
 PRESSURES AND TEMPERATURES AS NOTED ON MAP AT VARIOUS LOCATIONS  
 ALL MAINS HAVE A COAL TAR ENAMEL LINER AND TAR WRAPPED OUTSIDE COVER -  
 MINIMUM DESIGN PRESSURE - 150 P.S.I.  
 NO METERS  
 ALL MAINS HAVE A MINIMUM COVER OF 30 INCHES  
 ANCHORS ON ALL ANGLE POINTS (24" X 24" X 24" CONC. BLOCK)  
 ALL CONNECTIONS ARE DRESSER OR FLANGE COUPLINGS.  
 10' CONTOUR INTERVAL BASED ON PACIFIC AIR INDUSTRIES TOPO. MAP.

Application No. G-9477  
Permit No. G 9079

MAP MADE FROM INFORMATION SUPPLIED BY  
 JAMES O'DONAHUE AND ON THE SITE INSPECTION  
 OF THE AS BUILT WATER SYSTEM.  
 RECEIVED  
 NOV 21 1979  
 WATER RESOURCES DEPT  
 SALEM, OREGON

**SMITH & WESTVOLD**  
 ENGINEERING & SURVEYING  
 KLAMATH FALLS, OREGON

|            |  |         |
|------------|--|---------|
| MAPPED FOR | SKYLINE VIEW DIST. IMPROVEMENT COMPANY | MAR. 70 |
| MAPPED BY  | J. S. W.                               | 3-70    |
| CHECKED BY | L. C. S.                               |         |

SCALE 1" = 100'