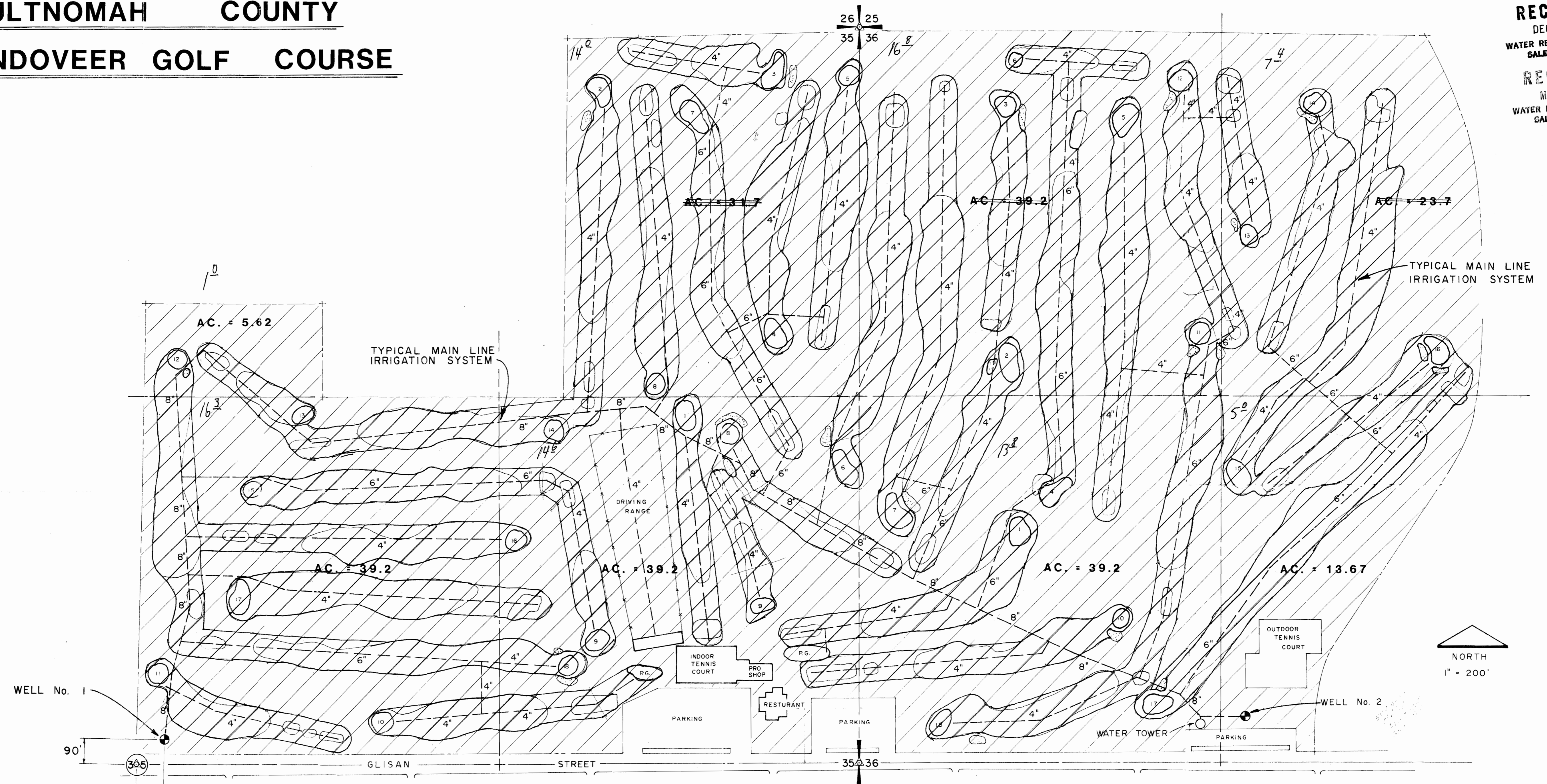


Application No. *G-11333*  
Permit No. *G10330*

**MULTNOMAH COUNTY**  
**GLENDOVEER GOLF COURSE**

**RECEIVED**  
DEC 26 1984  
WATER RESOURCES DEPT  
SALEM, OREGON  
**RECEIVED**  
MAY 1 1985  
WATER RESOURCES DEPT  
SALEM, OREGON



**PLAN**

NE 1/4 SEC. 35, T. 1 N., R. 2 E., W.M.  
NW 1/4 SEC. 36, T. 1 N., R. 2 E., W.M.

DATE	NO.	REVISION	BY	DES	FILE NO.
				D.A.L.	565.04
				R.C.G.	SCALE: 1" = 200'
				D.A.L.	DATE: DEC. 84
					APPROVED:

PROJECT: **WATER RIGHTS APPLICATION  
GLENDOVEER GOLF COURSE  
WELL NO. 1 (RECONSTRUCTION)**

SHEET TITLE: **SCHEMATIC OF IRRIGATION SYSTEM  
LAND IRRIGATED**



**LEE ENGINEERING, INC.**  
CONSULTING ENGINEERS  
OREGON CITY, OREGON

FILE NO.  
**565.04**  
SHEET NO.  
**1**  
**1**