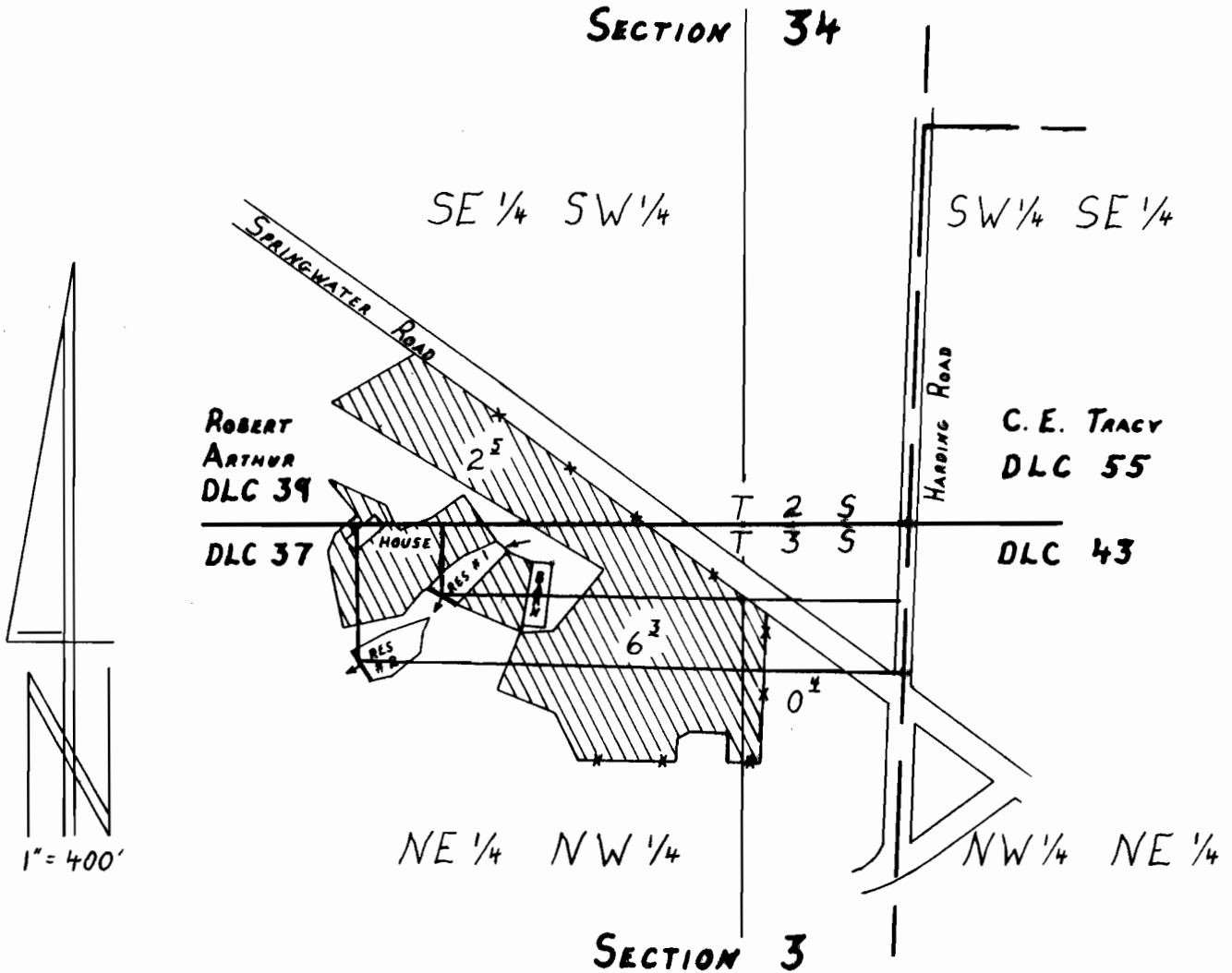


T. 2 & 3 S., R. 3 E., W.M.



RES 1: 320' S & 1240' W FROM NE CORNER, DLC 37
RES 2: 160' S & 1040' W FROM NE CORNER, DLC 37

FINAL PROOF SURVEY

UNDER

R-69027 R-10831
Application No. 69028 Permit No. 50029
IN NAME OF

LAMONT L. & DOREEN R. RUMGAY

Surveyed MAY 14, 1992, by R.W. Klassen

12/21/06 JWG

PFS W/FF R/W 2/93