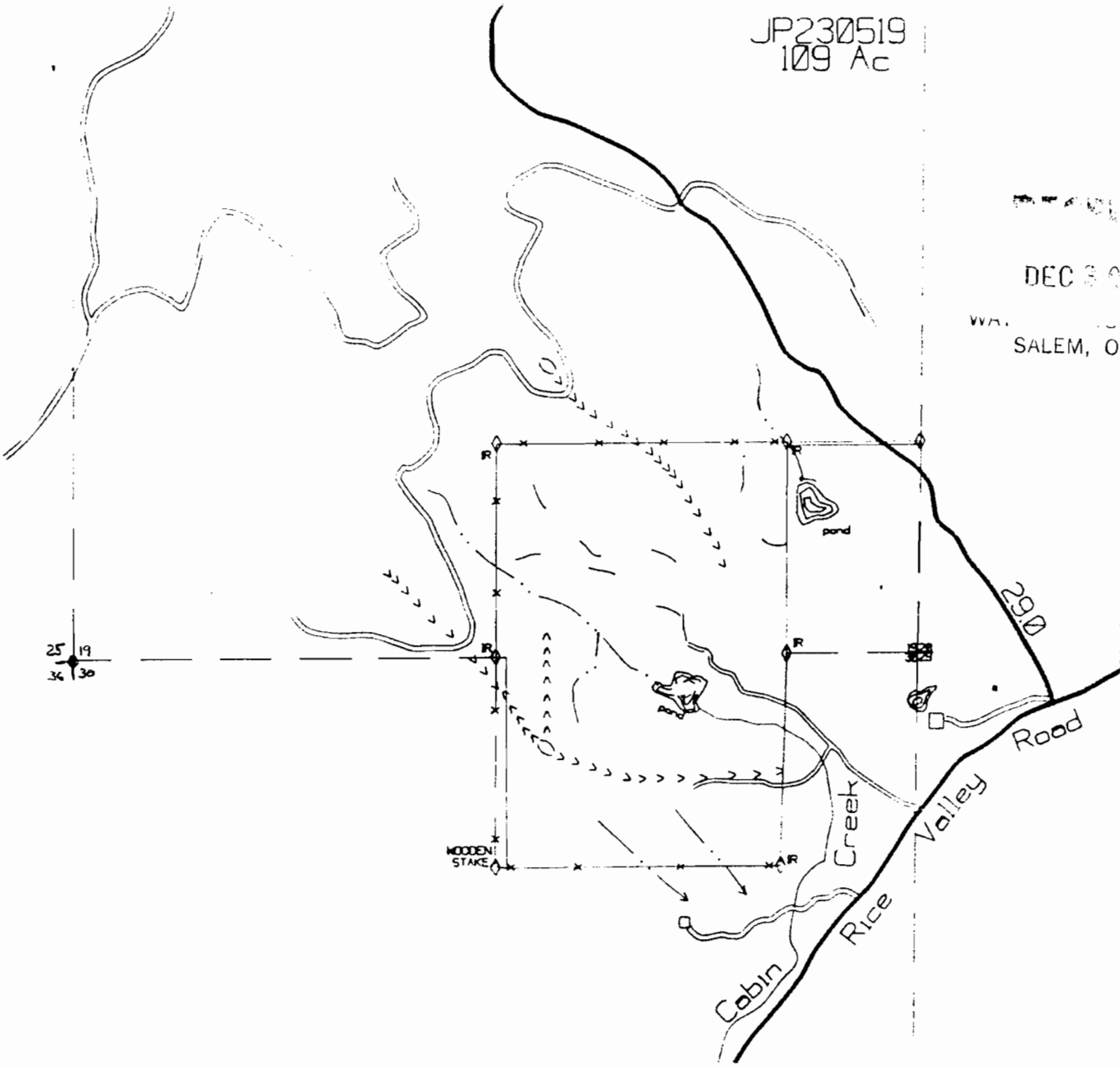


JP230519
109 Ac


RECEIVED

DEC 30 1994

WATER RESOURCES DEPT.
SALEM, OREGON



LEGEND

 POND NW 1/4 NE 1/4 SECTION 30 T.23 S. R.5 W.

THIS POND WAS SURVEYED FOR POND AND IRRIGATION EASEMENT
BY BRUCE SHANER IN 1981 AND AND MAP M90-1 FILED WITH THE
DOUGLAS COUNTY SURVEYORS OFFICE

Application No. R-76870
Permit No.