

30 06 06:11p
10/30/2006 16:18

Kathy Johnson
5039860901

5412453556
WRD 1ST FL

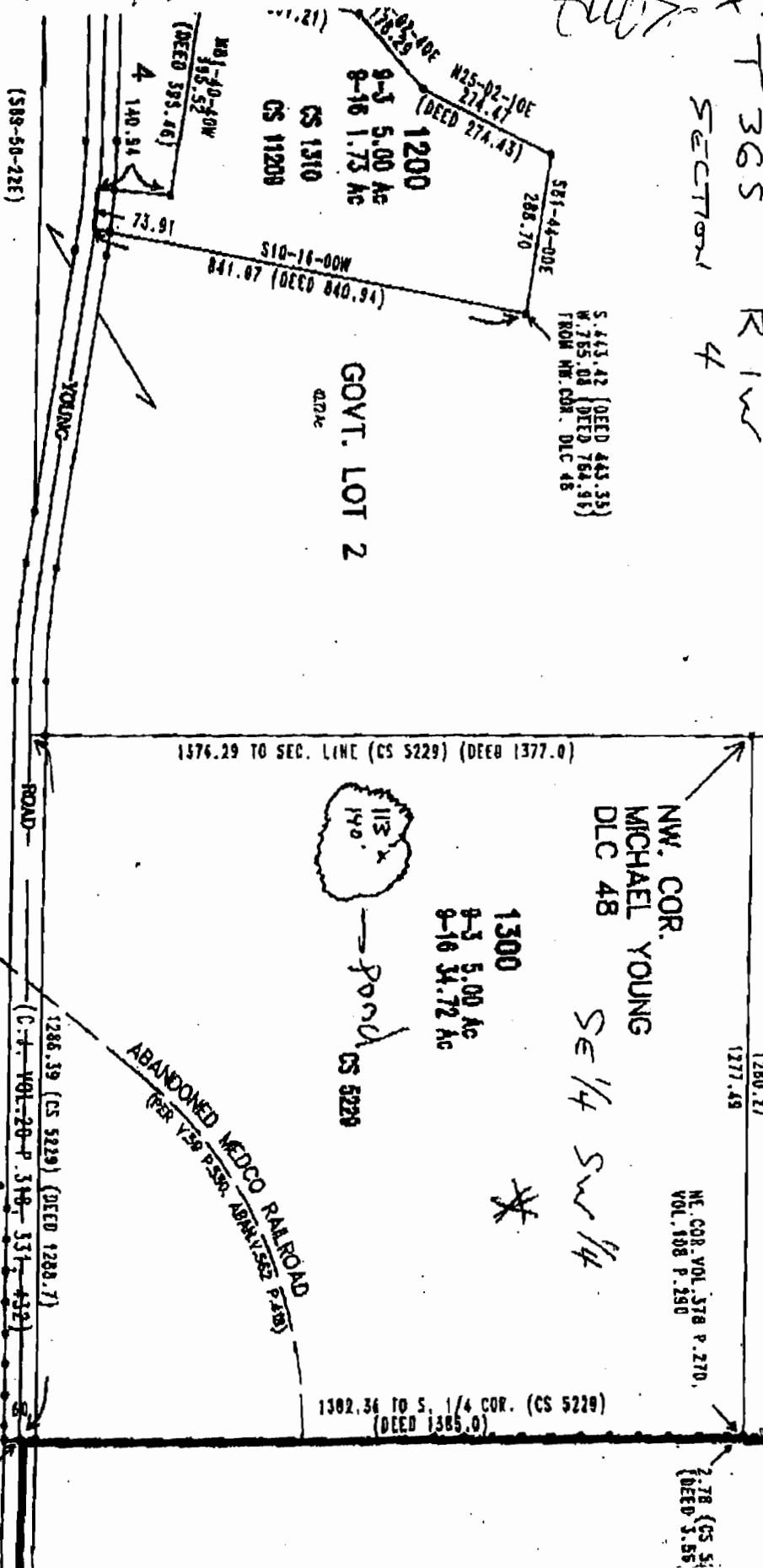
PAGE 03/04

WATER RESOURC
SALEM ORE

OCT 3 4
RECEIVED

POND LOCATED FROM
SOUTH 1/4 CORNER
G30 FE NORTH & 1120 FE WEST

South
1/4 CORNER



Agree with map & details -
Thank you

Submitted: (with & without)
Sent 10-30-06 pg 3 of 4

T365 R1W
SECTION 4

REVISID CORRECTED
ADJUSTED SCALE
1" = 300 FEET
DEEPEST PART 7' (only small amt is that deep)
MOST IS 5' + UNDER

T.365. R.1W, W.1/4.
SECTION 4
1" = 300'

WORK
COPY
RECEIVED
FEB 9 2007

WATER RESOURCES DEPT
SALEM, OREGON