

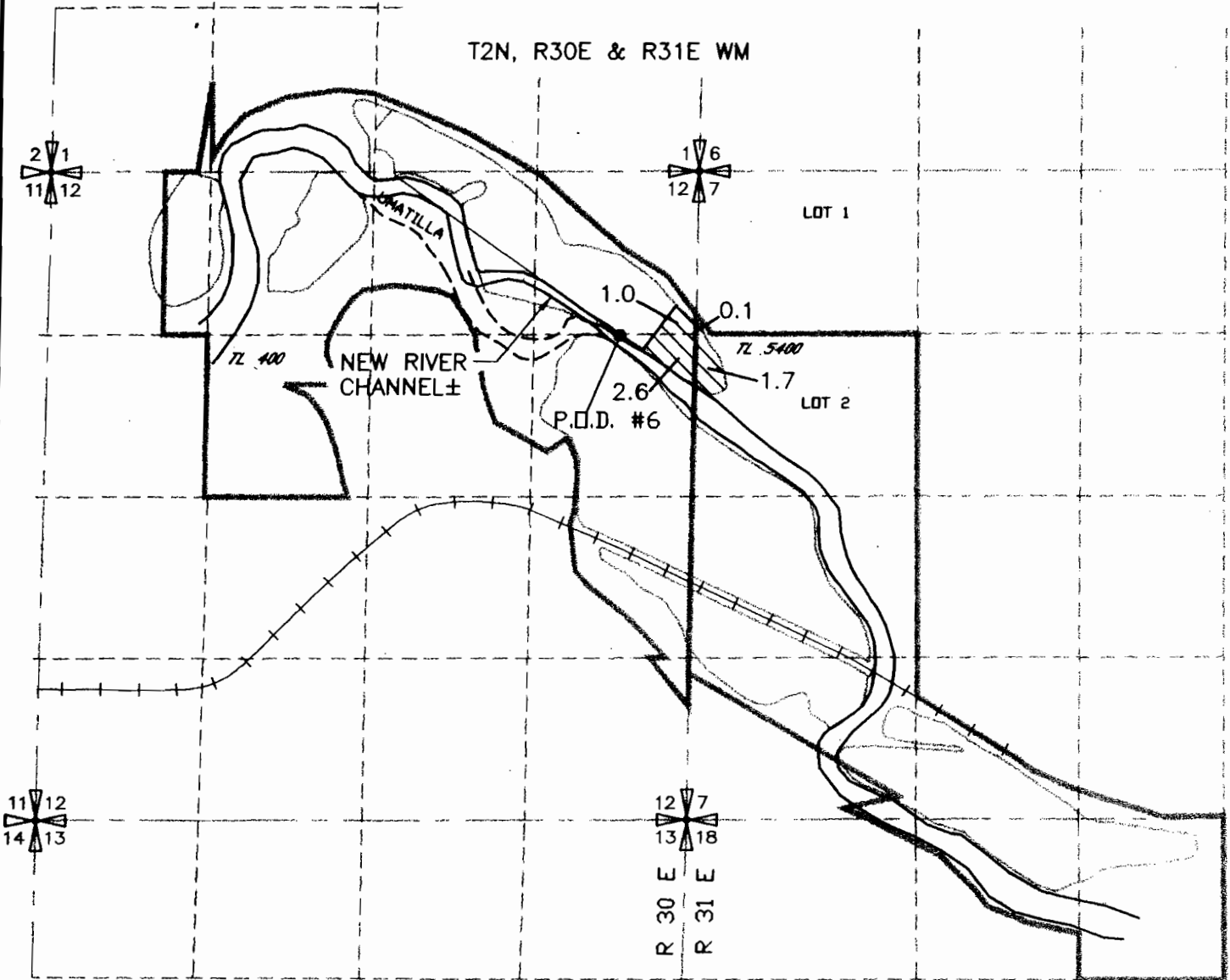
FINAL PROOF MAP
 FOR TRANSFER T-8718
 B&G RESOURCES
 C/O KENNETH E. GUSTAFSON


RECEIVED

FEB 25 2005

WATER RESOURCES DEPT
 SALEM, OREGON

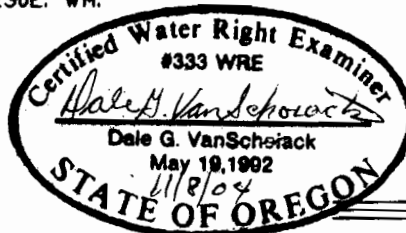
T2N, R30E & R31E WM



 5.4 AC AREA IRRIGATED

 TL 5400 TAX LOT

AUTHORIZED POINTS OF DIVERSION
 P.O.D. #6 1330 FEET SOUTH AND 610 FEET WEST
 FROM THE NE CORNER SECTION 12, T 2 N, R30E. WM.



DRAWING: H:\CAD\AG\3522\032\3522032FP6776.dwg
 PRINTED BY: RogerW on 11/08/04 06:30 AM

NOTE: THE PURPOSE OF THIS MAP IS TO IDENTIFY THE APPROXIMATE LOCATION OF THE WATER RIGHT. IT IS NOT INTENDED TO PROVIDE INFORMATION RELATIVE TO THE LOCATION OF PROPERTY OWNERSHIP BOUNDARY LINES.


 Consultants, Inc.
 A Tetra Tech Company