

INTERVAL 20 FEET  
 AT 10-FOOT CONTOURS  
 DATUM OF 1929

NATIONAL MAP ACCURACY STANDARDS  
 COLORADO 80225, OR RESTON, VIRGINIA 22092  
 AND SYMBOLS IS AVAILABLE ON REQUEST



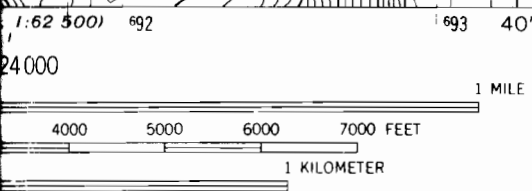
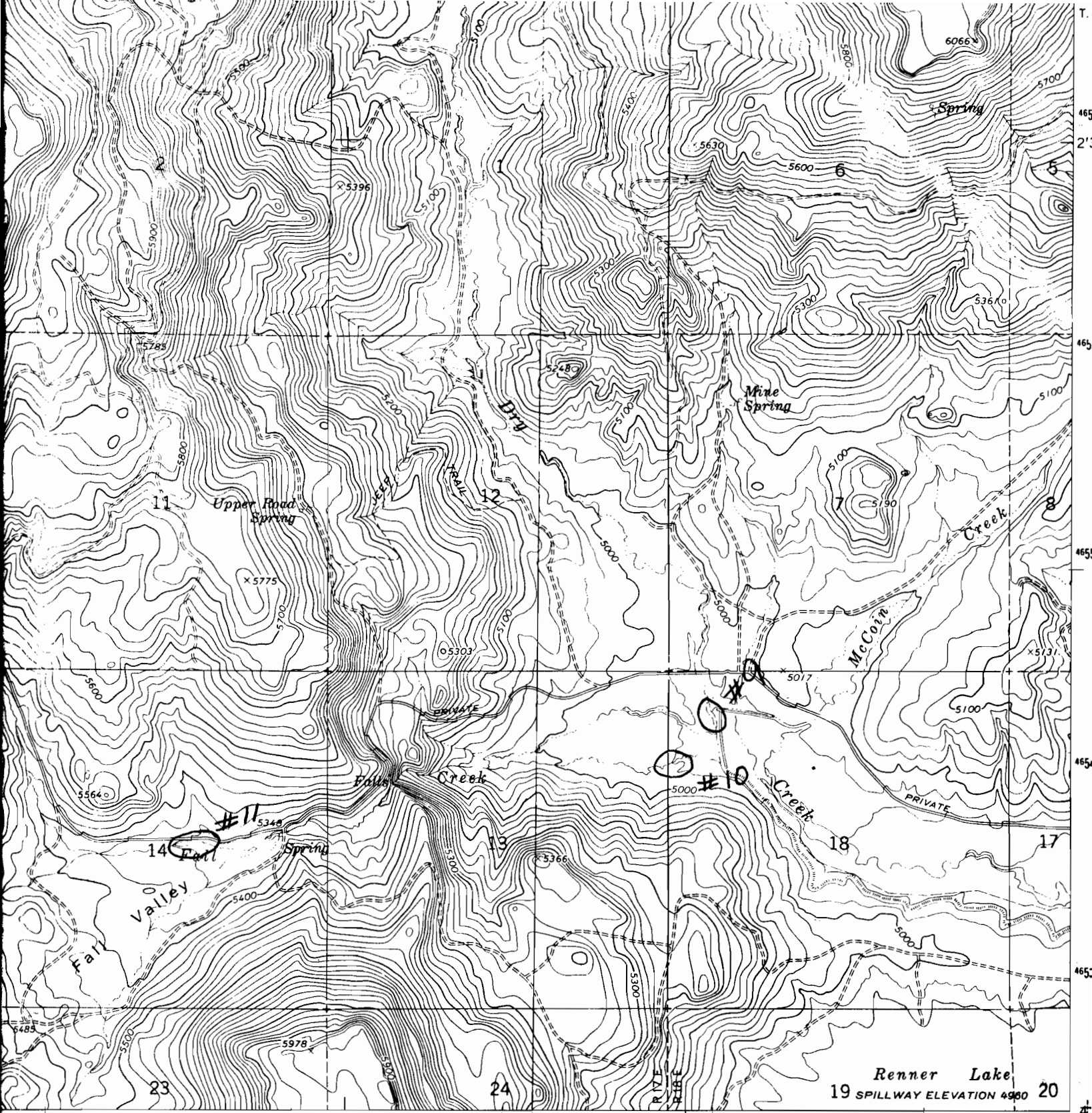
QUADRANGLE LOCATION

Revisions shown in purple compiled from aerial photographs taken 1979 and other source data. This information not field checked. Map edited 1980.

ROAD CLASSIFICATION  
 Medium-duty ——— Light-duty ———  
 Unimproved dirt - - - - -

FITZWATER POINT, OREG.  
 N4200—W12030/7.5

1964  
 PHOTOREVISED 1980



MAP ACCURACY STANDARDS  
 COLORADO 80225, OR RESTON, VIRGINIA 22092  
 SYMBOLS IS AVAILABLE ON REQUEST



QUADRANGLE LOCATION

Revisions shown in purple compiled from aerial photographs  
 taken 1979 and other source data. This information not

Light-duty  
ED

ROAD CLASSIFICATION  
 Unimproved dirt

JUL 11 1996

WATER RESOURCES DEPT.  
 SALEM, OREGON  
 DOG LAKE, OREG.  
 N4200-W12037.5/7.5

1964  
 PHOTOENLARGED, 1980

INTERIOR—GEOLOGICAL SURVEY, RESTON, VIRGINIA—1980  
 696000m.E. 120°37'3

Renner Lake  
 19 SPILLWAY ELEVATION 4980 20