






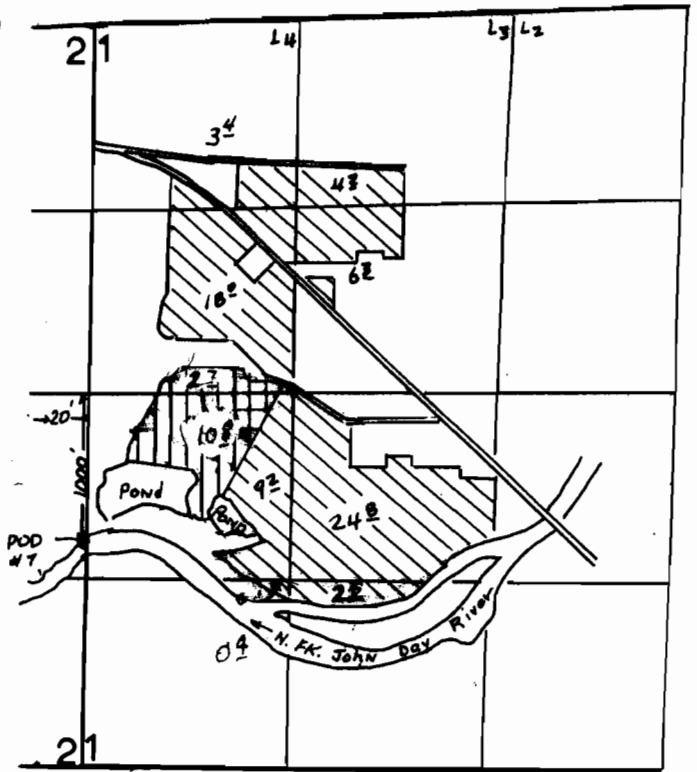
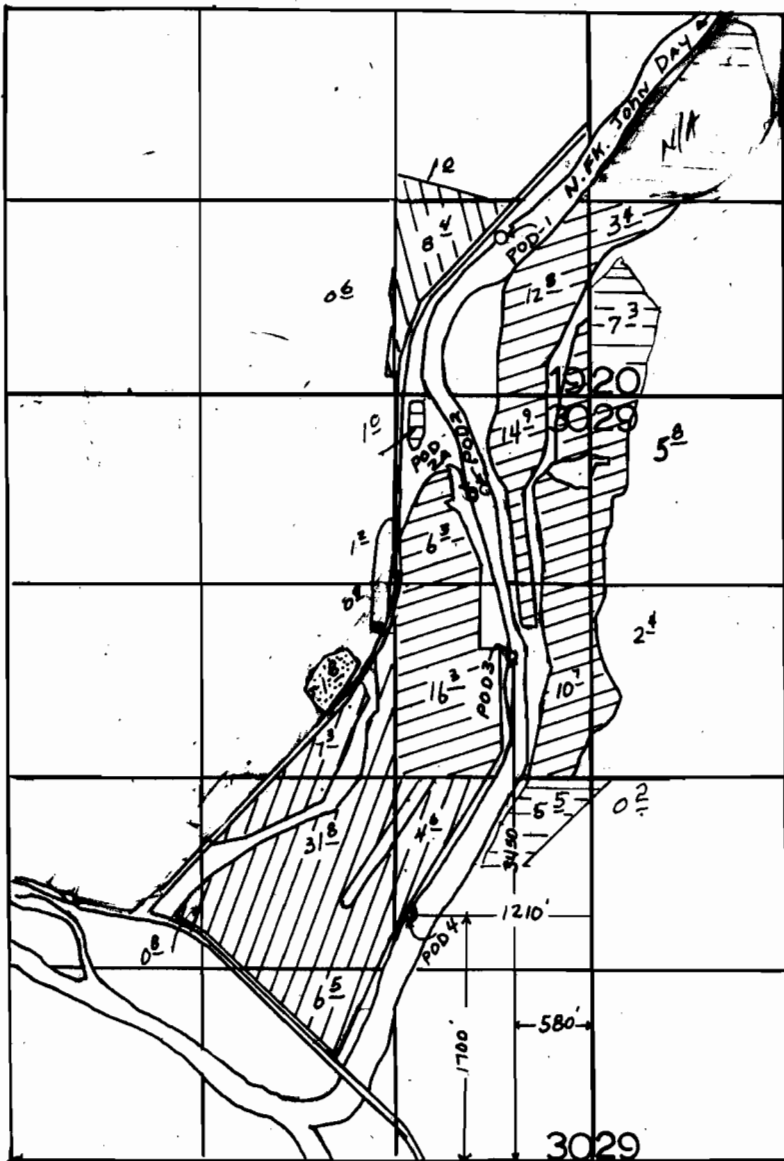


-  SUPP'L TO C-51440
-  SUPP'L TO C-38695
-  SUPP'L TO C-38696
-  SUPP'L TO C-54420

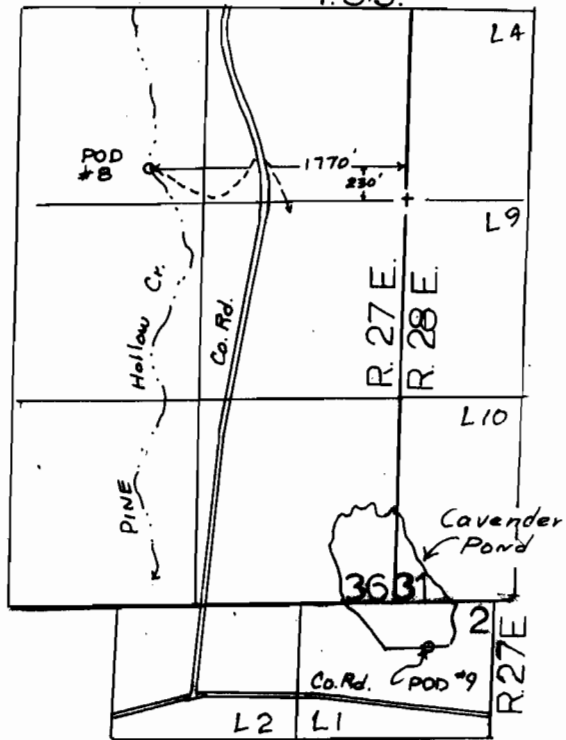
-  SUPP'L TO C-57551
-  P.P.M. PINE HOLLOW
SUPP'L STORAGE } P47562
-  SUPP'L TO T-5721

T.9S., R. 27E., W.M.

T.9S., R. 26E., W.M.



T.8S.



FINAL PROOF SURVEY
UNDER
TRANSFER 5721

Application R-61610 PERMIT R - 8654
65014 47562

IN THE NAME OF
THOMAS ORCHARDS, INC. & JACK CAVENDER

Surveyed 3-31-2000, By J. MILLER

- POD-1, 1100' N. & 580' W. FROM SE COR. SEC. 19.
- POD-2, 620' S. & 730' W. FROM NE COR. SEC. 30.
- POD-2A, 680' S. & 830' W. FROM NE COR. SEC. 30.
- POD-7, 1000' S. & 20' W. FROM E 1/4 COR. SEC. 2.
- POD-8, 230' N. & 1770' W. FROM E 1/4 COR. SEC. 36.
- POD-9, 300' S. & 220' E. FROM SW COR. SEC. 31.

SCALE 1"=1320'

LHN 2/5/07