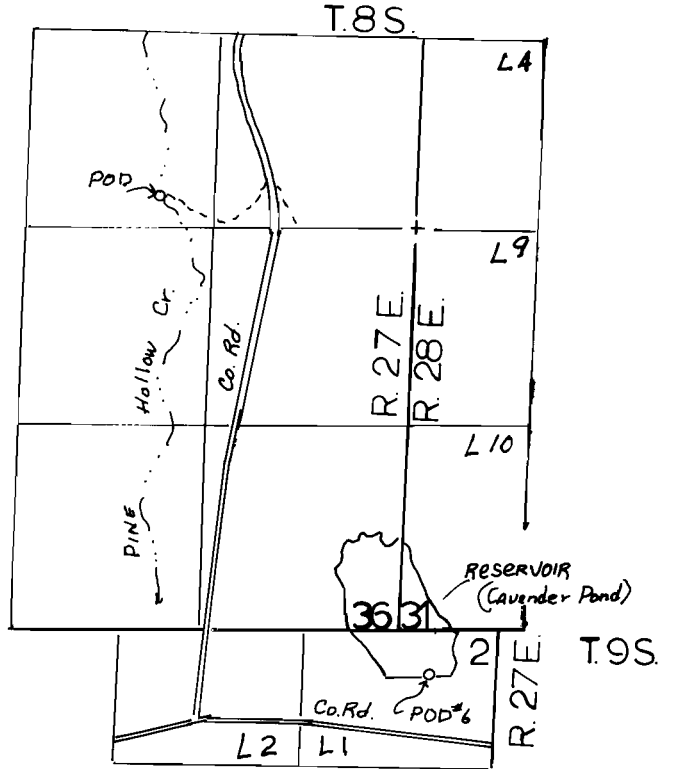
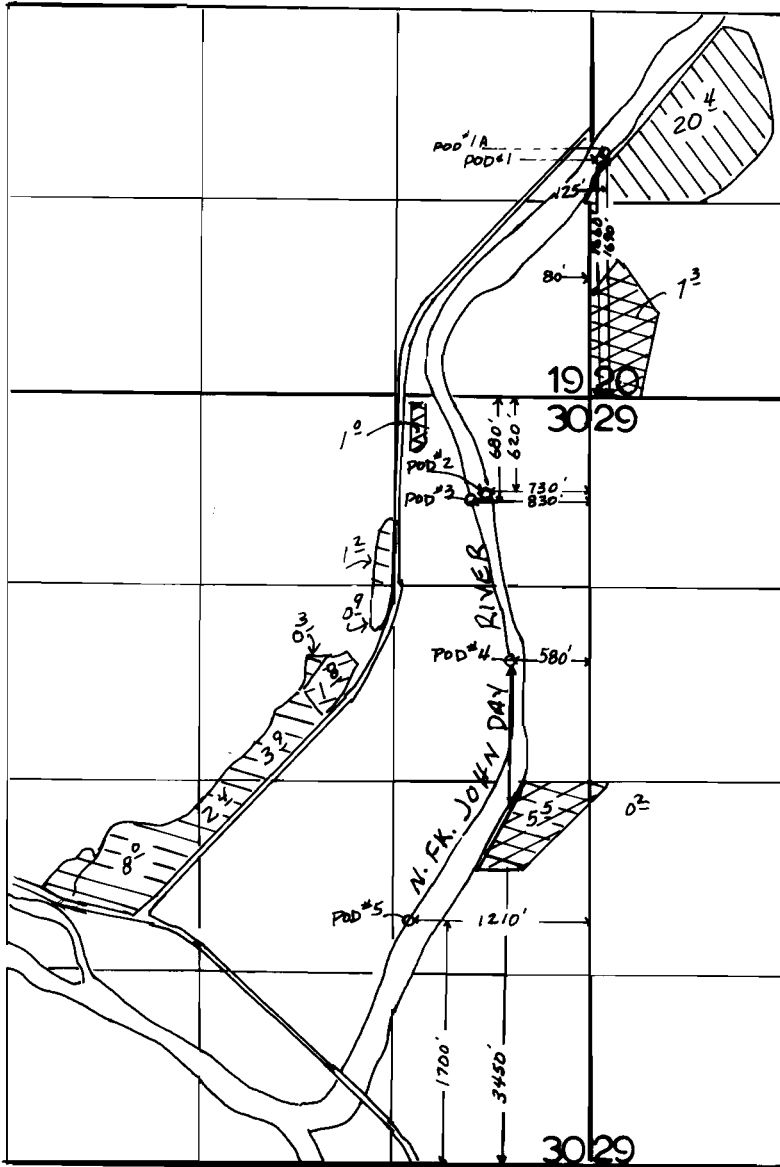



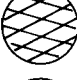



T. 9 S., R 26 E., W.M.



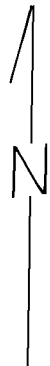
-  P-49637, FROST PROTECTION NFJD RIVER SUPP'L IRR. RES. P# 8654
-  P-49637, FROST PROTECTION
-  P-49637, IRR. & FROST PROTECTION, NFJD RIV. DEFICIENCY FROM RESERVOIR
-  P-49637, FROST PROTECTION NFJD RIV.
- 

POD #6 (RES. DIV.) 300'S. & 220'E. FROM THE SW COR. SEC. 31

FINAL PROOF SURVEY
UNDER

Application No. 68390.. Permit No. 49637.....
IN NAME OF
HITSELBERGER FAMILY TRUST
.....THOMAS ORCHARDS, INC.....

Surveyed MAR. 16, 2000, by J. MILLER.....



1" = 1320'