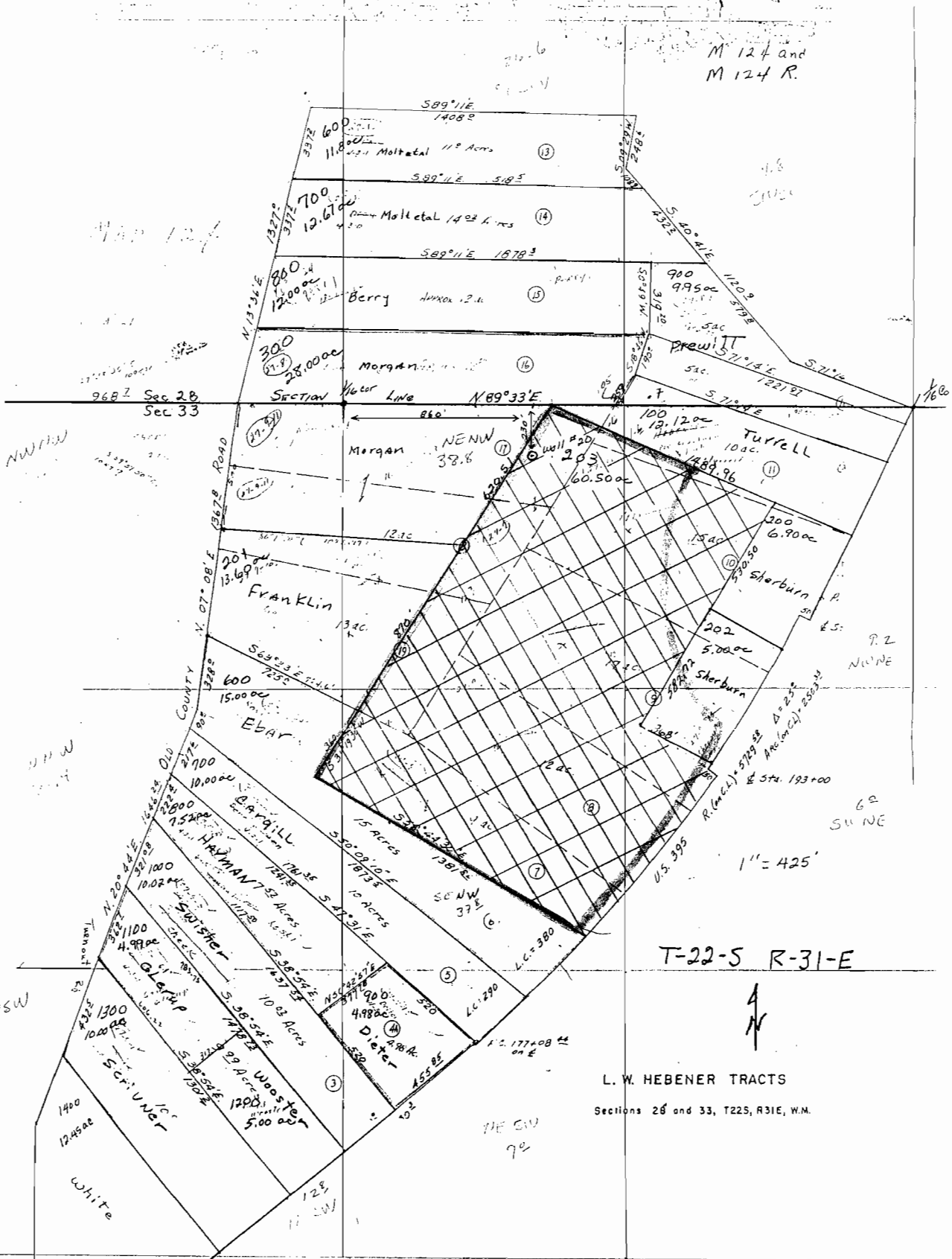


M 124 and  
M 124 R.



Map 124

968 Z Sec 28  
Sec 33

NW 1/4

NW 1/4

NW 1/4

T-22-S R-31-E

L. W. HEBENER TRACTS  
Sections 26 and 33, T22S, R31E, W.M.

APPROXIMATE  
BOUNDARY, COR # 35223

REMAINING  
RIGHT LANDS

**RECEIVED**  
DEC - 6 1996  
WATER RESOURCES DEPT.  
SALEM, OREGON