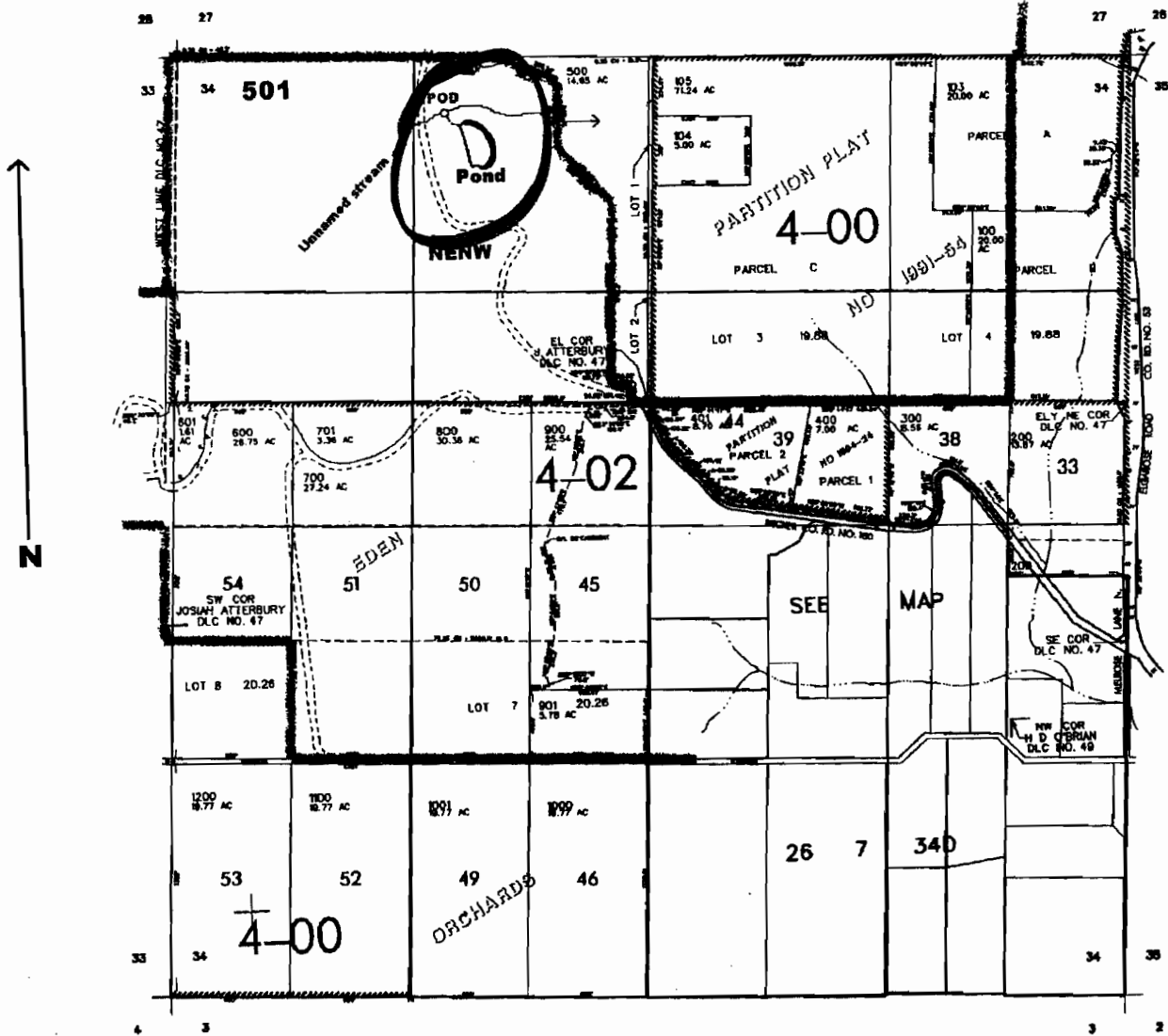


R-13791

RECEIVED  
JUL 28 2003  
WATER RESOURCES DEPT  
SALEM, OREGON

SEC. 34 T.26S. R.7 W. W.M.  
DOUGLAS COUNTY  
Scale: 1" = 1000'



POD is located 300 ft. S. and 1480 ft. E. } from the NW corner of Sec. 34  
Dam is located 450 ft. S. and 1750 ft. E. }

RECEIVED

MAY 16 2007

WATER RESOURCES DEPT  
SALEM, OREGON

app-no R-85719  
Permit no R-13791