

TOWNSHIP 36 S RANGE 2 W

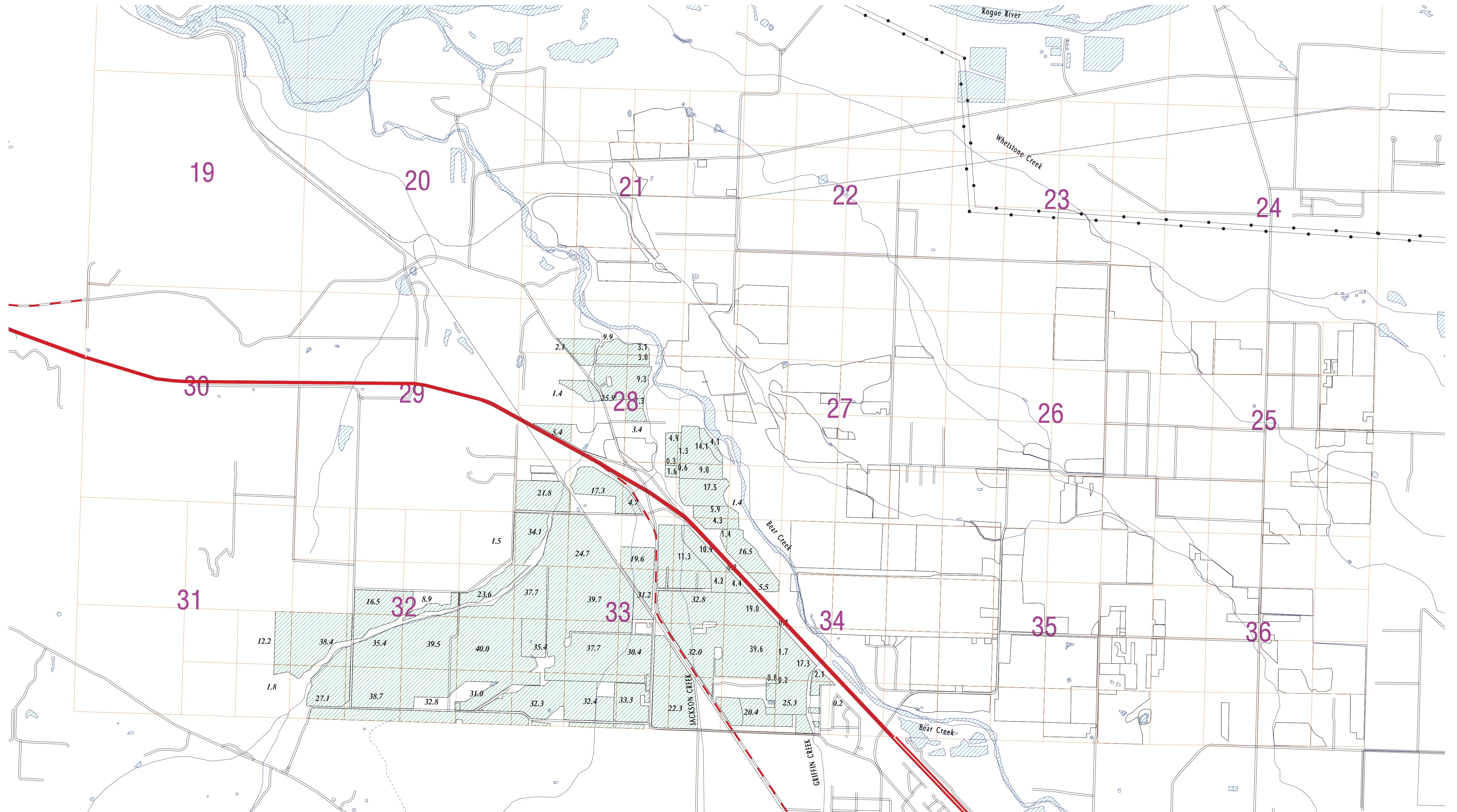
Rogue River Valley Irrigation District

FINAL

JANUARY 2008

■ S 25915 - U.S. Bureau of Reclamation Storage

Scale: 1 inch = 1320 feet



TOWNSHIP 37 S RANGE 2 W

Rogue River Valley Irrigation District

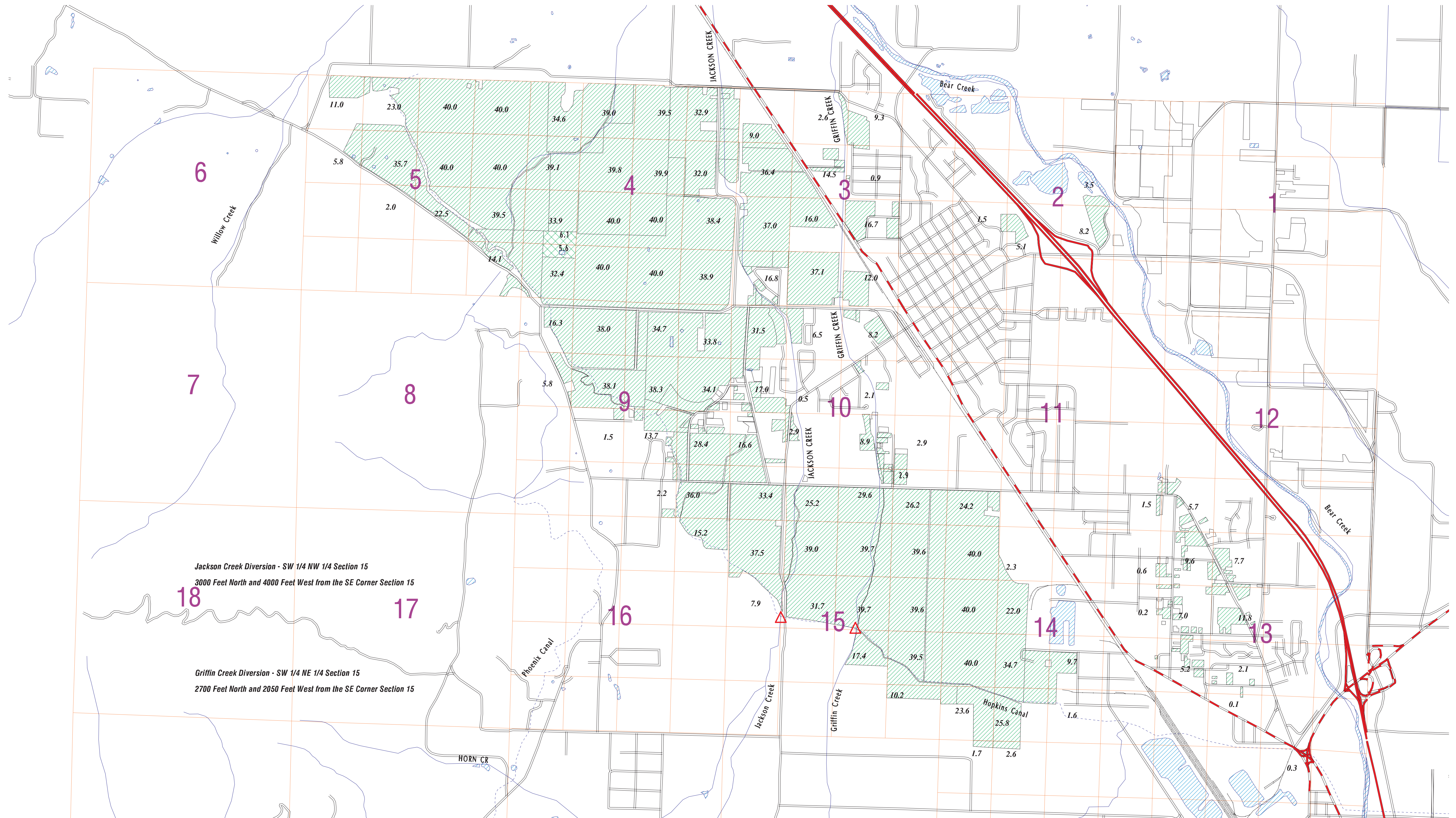


S 25915 - U. S. Bureau of Reclamation

FINAL

JANUARY 2008

Scale: 1 inch = 1320 feet



Jackson Creek Diversion - SW 1/4 NW 1/4 Section 15
3000 Feet North and 4000 Feet West from the SE Corner Section 15

Griffin Creek Diversion - SW 1/4 NE 1/4 Section 15
2700 Feet North and 2050 Feet West from the SE Corner Section 15