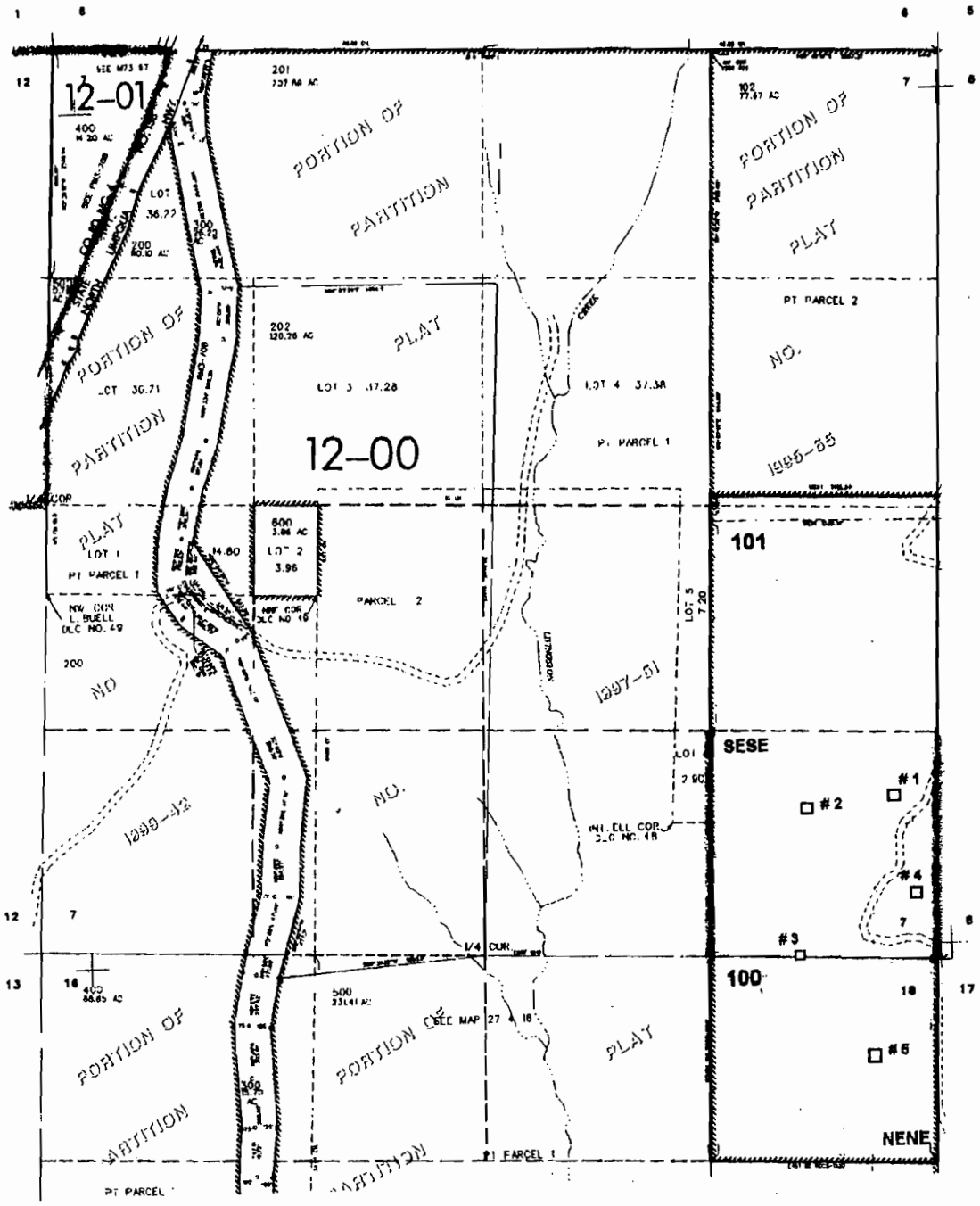


T.27S. R.4 W. W.M.
DOUGLAS COUNTY
Scale: 1" = 1000'



- Pond # 1 - 850 ft. N. & 250 ft. W. }
 # 2 - 850 ft. N. & 780 ft. W. } all from the SE corner of Sec. 7
 # 3 - 800 ft. W. }
 # 4 - 400 ft. N. & 150 ft. W. }
 # 5 - 660 ft. S. & 380 ft. W. }

RECEIVED

MAY 20 2003

WATER RESOURCES DEPT.
SALEM, OREGON

RECEIVED

OCT 05 2007

WATER RESOURCES DEPT
SALEM, OREGON

app # R-85608
Permit # R-13708