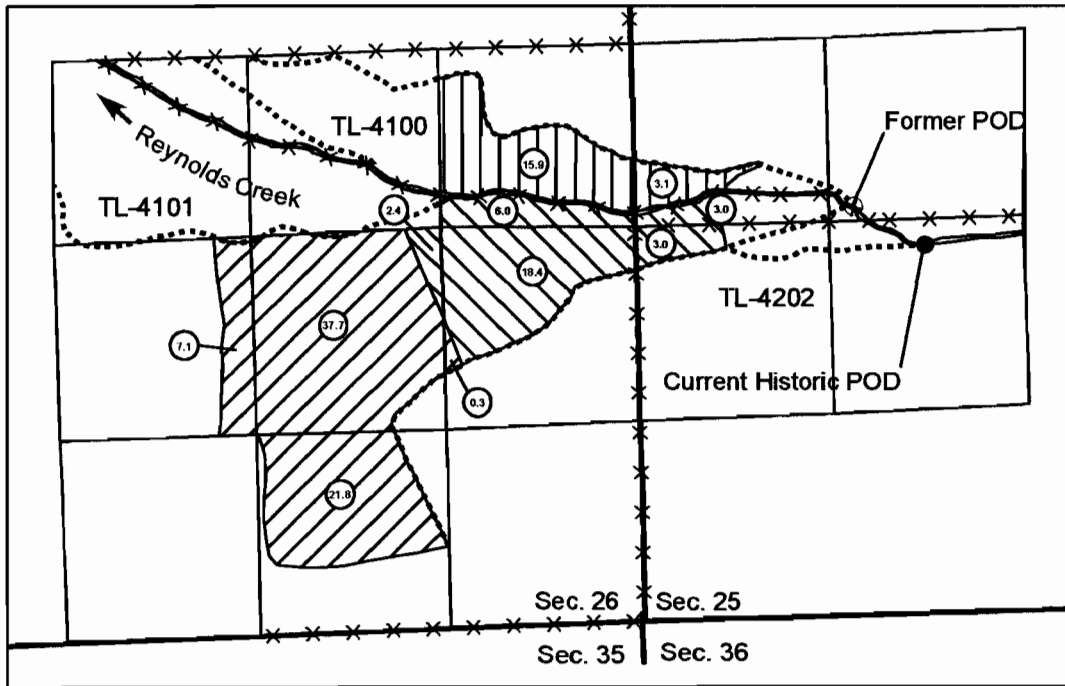


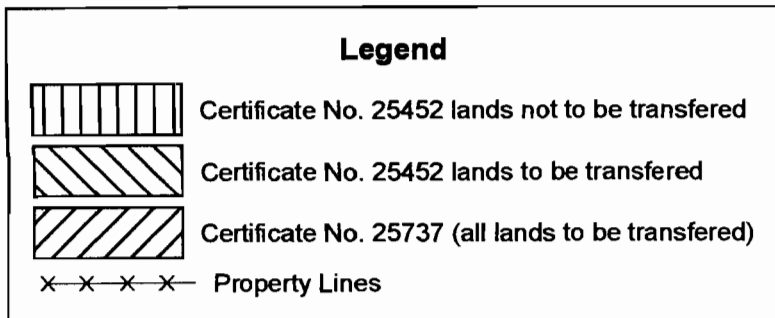
# Historic Point of Diversion Transfer Application Map for Elmwood Ranches, Inc



**Township 13 South, Range 34 East W.M.**

**Current Historic POD: N 44° 24' 36.7" W 118° 33' 56.5"**

**1 inch = 1320 feet**



**RECEIVED**  
JUN 30 2006  
WATER RESOURCES DEPT  
SALEM, OREGON