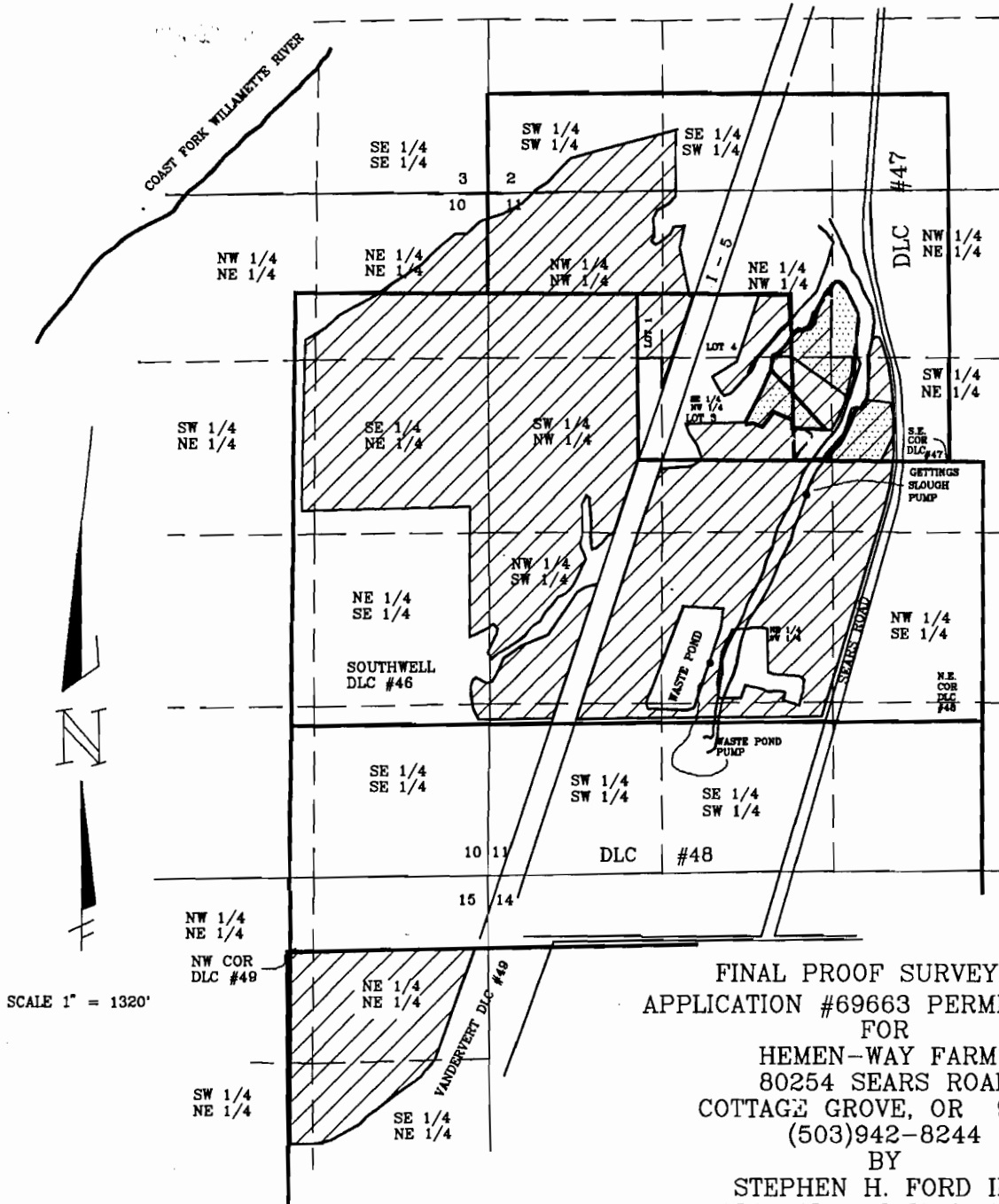


TOWNSHIP 20 SOUTH, RANGE 3 WEST, W.M.



SUPPLEMENTAL FROM EFFLUENT & RESERVOIR:

AREA WITHIN DLC #47
 SW 1/4 SW 1/4 - 7.50 AC
 SE 1/4 SW 1/4 - 1.00 AC
 SECTION 2
 NW 1/4 NW 1/4 - 21.90 AC
 NE 1/4 NW 1/4 - 4.20 AC
 NW 1/4 NE 1/4 - 0.20 AC
 SW 1/4 NE 1/4 - 4.00 AC
 SE 1/4 NW 1/4 - 5.50 AC

SECTION 11
 AREAS WITHIN GOVT. LOTS SEC. 11
 LOT 4 - 2.10 AC
 LOT 3 - 6.20 AC
 LOT 1 - 1.90 AC

AREAS WITHIN DLC #48
 NE 1/4 NE 1/4 - 14.33 AC
 NW 1/4 NE 1/4 - 0.80 AC
 SW 1/4 NE 1/4 - 3.50 AC
 SE 1/4 NE 1/4 - 34.80 AC
 NE 1/4 SE 1/4 - 2.80 AC
 SE 1/4 SE 1/4 - 0.30 AC

SECTION 10
 AREAS WITHIN SECTION 10 & OUTSIDE DLC #46
 NE 1/4 NE 1/4 - 5.97 AC
 SECTION 10

AREAS WITHIN DLC #46
 NW 1/4 NW 1/4 - 15.00 AC
 SW 1/4 NW 1/4 - 36.20 AC
 NW 1/4 SW 1/4 - 30.00 AC
 SW 1/4 SW 1/4 - 3.20 AC
 SE 1/4 SW 1/4 - 3.90 AC
 NE 1/4 SW 1/4 - 30.10 AC
 NW 1/4 SE 1/4 - 6.00 AC
 SW 1/4 NE 1/4 - 4.20 AC
 SE 1/4 NW 1/4 - 13.10 AC
 SECTION 11

AREAS WITHIN DLC #49
 NE 1/4 NE 1/4 - 18.42 AC
 NW 1/4 NE 1/4 - 2.59 AC
 SW 1/4 NE 1/4 - 2.59 AC
 SE 1/4 NE 1/4 - 18.34 AC
 SECTION 15

PRIMARY FROM GIDDING SLOUGH & RESERVOIR:

LOT 4 - 0.20 AC
 LOT 3 - 0.78 AC
 NE 1/4 NW 1/4 - 1.70 AC
 NW 1/4 NE 1/4 - 1.40 AC
 SE 1/4 NW 1/4 - 1.64 AC
 SW 1/4 NE 1/4 - 4.40 AC
 SECTION 11


SCALE 1" = 1320'

FINAL PROOF SURVEY MAP
 APPLICATION #69663 PERMIT #50827

FOR
 HEMEN-WAY FARMS
 80254 SEARS ROAD
 COTTAGE GROVE, OR 97424
 (503)942-8244

BY
 STEPHEN H. FORD INC.
 1120 BAILEY HILL ROAD #5
 EUGENE, OR 97402
 (503)344-1852

PUMP LOCATION:
 GIDDINGS SLOUGH PUMP:
 350' SOUTH & 1140' WEST OF
 THE SOUTHEAST CORNER OF DLC #47
 WASTE POND PUMP:
 438.87' NORTH & 2071.06' WEST
 OF THE NORTHEAST CORNER DLC #48

 PRIMARY FROM GIDDING SLOUGH SUPPLEMENTED BY EFFLUENT & RES.

 SUPPLEMENTAL FROM EFFLUENT AND RESERVOIR

NOTE:
 THIS MAP WAS PREPARED FOR THE PURPOSE OF IDENTIFYING THE LOCATION OF THE WATER RIGHT ONLY. IT IS NOT INTENDED TO PROVIDE DIMENSIONS OR LOCATION OF PROPERTY OWNERSHIP LINES.

