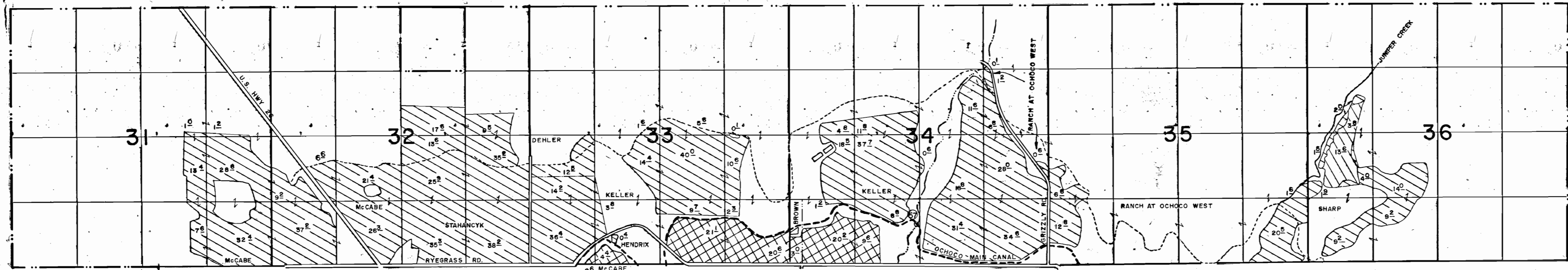
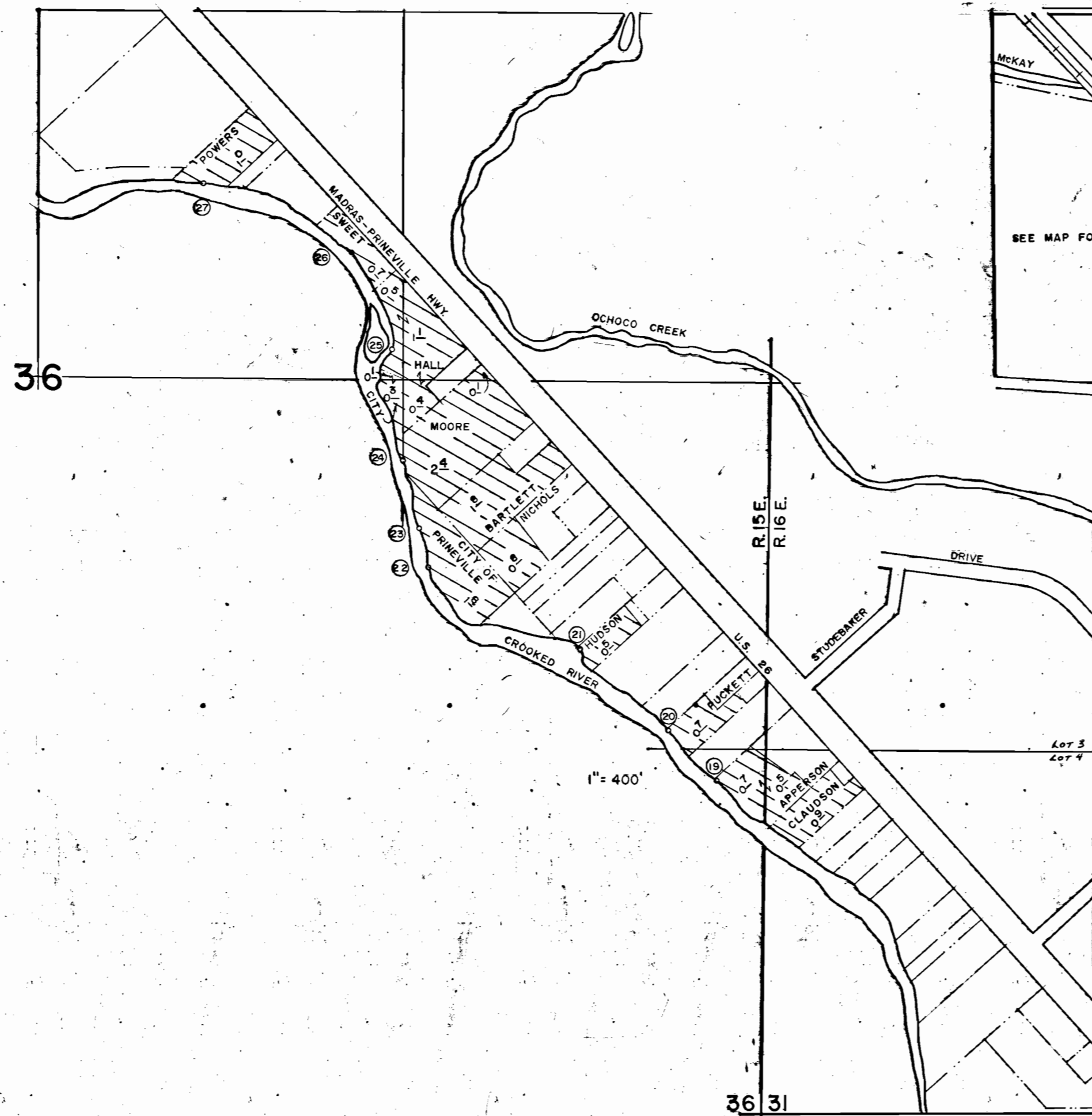


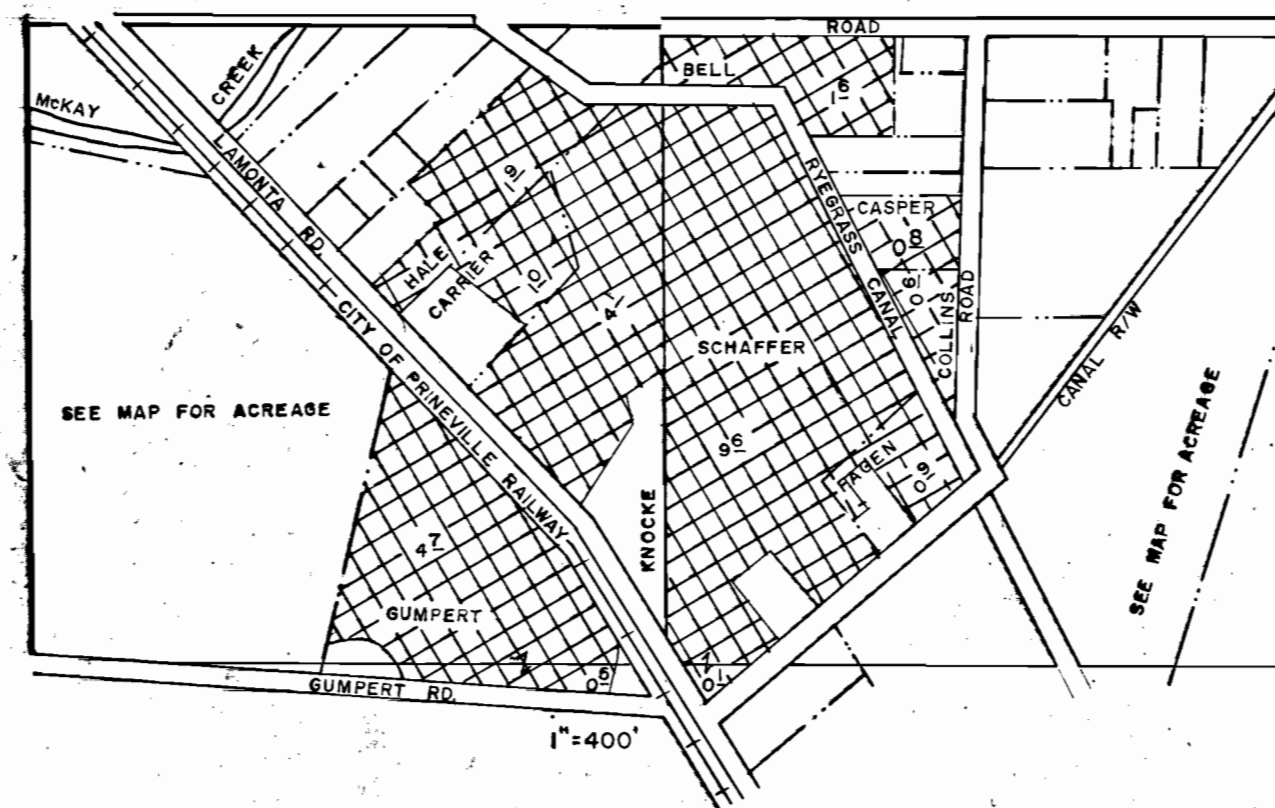
TOWNSHIP 13 SOUTH RANGE 15 EAST WM.



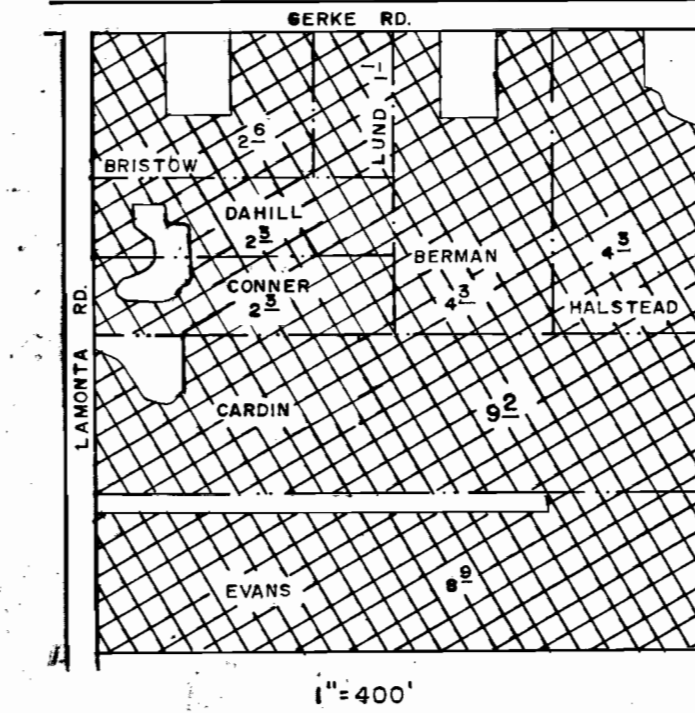
T.14S. R.15 & 16E. WM.



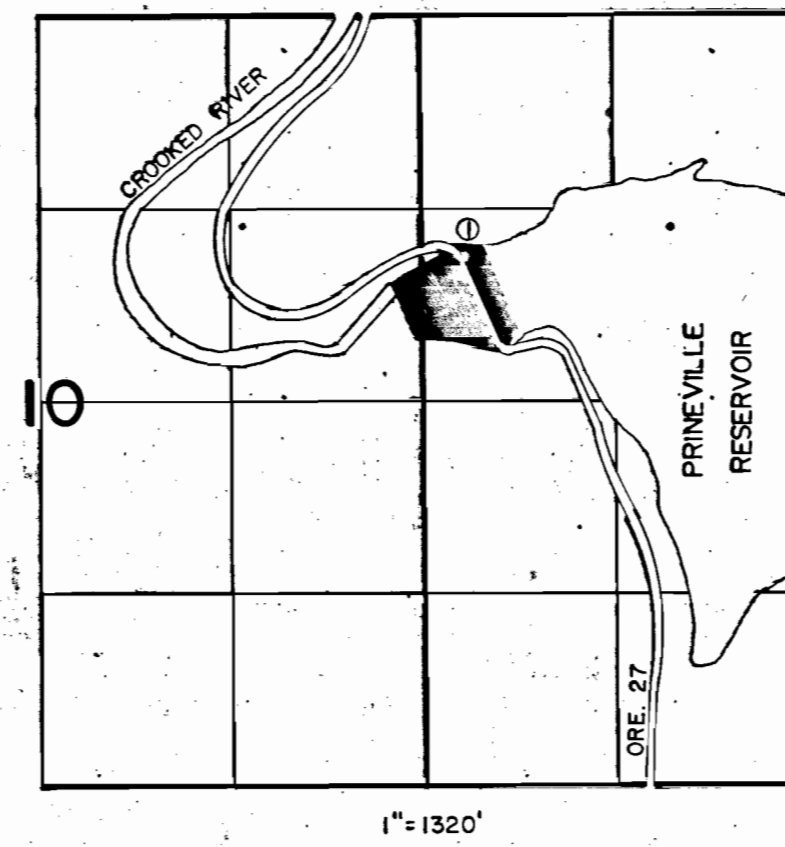
T.14S. R.15E. WM.
SEC. 25
N 1/2 NW 1/4



T.14S. R.15E. WM.
SEC. 12
NW 1/4 NW 1/4



T.17S. R.16E. WM.



SEE SHEET 3

FINAL PROOF SURVEY
OF THE
CROOKED RIVER PROJECT

UNDER
APPLICATION 3587 PERMIT R-528
4788 5426
R-32640 R-2223
32641 25991

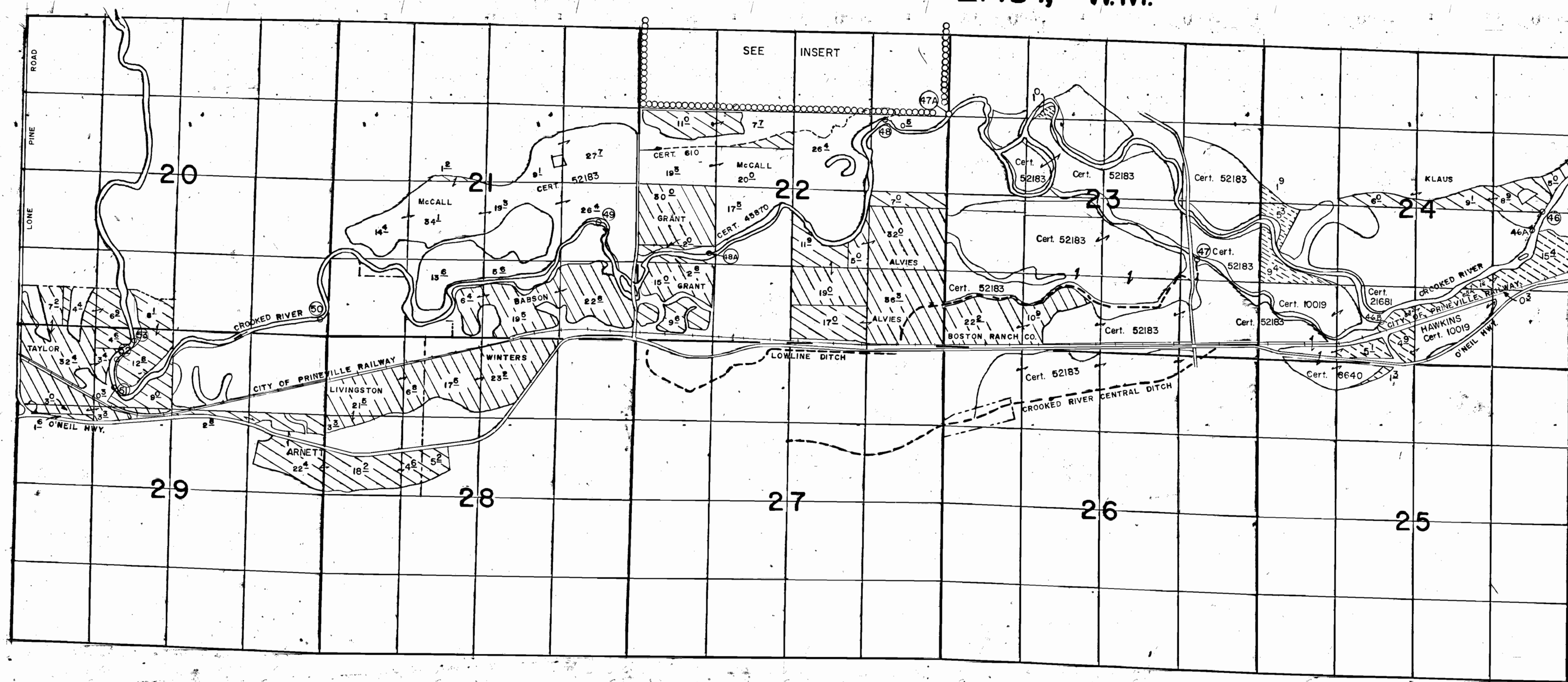
PERMIT 5426 PRIMARY from OCHOCHO RES. & CREEK SURVEYED JUNE, 1979 TO MARCH, 1980
SUPPLEMENTAL from OCHOCHO RES. BY L.H. NUAN
PERMIT 25991 PRIMARY from PRINEVILLE RES. & CROOKED R.
SUPPLEMENTAL from PRINEVILLE RES.

SHEET 7 OF 5

E 35'-2

Final 1980
Revised March 1980

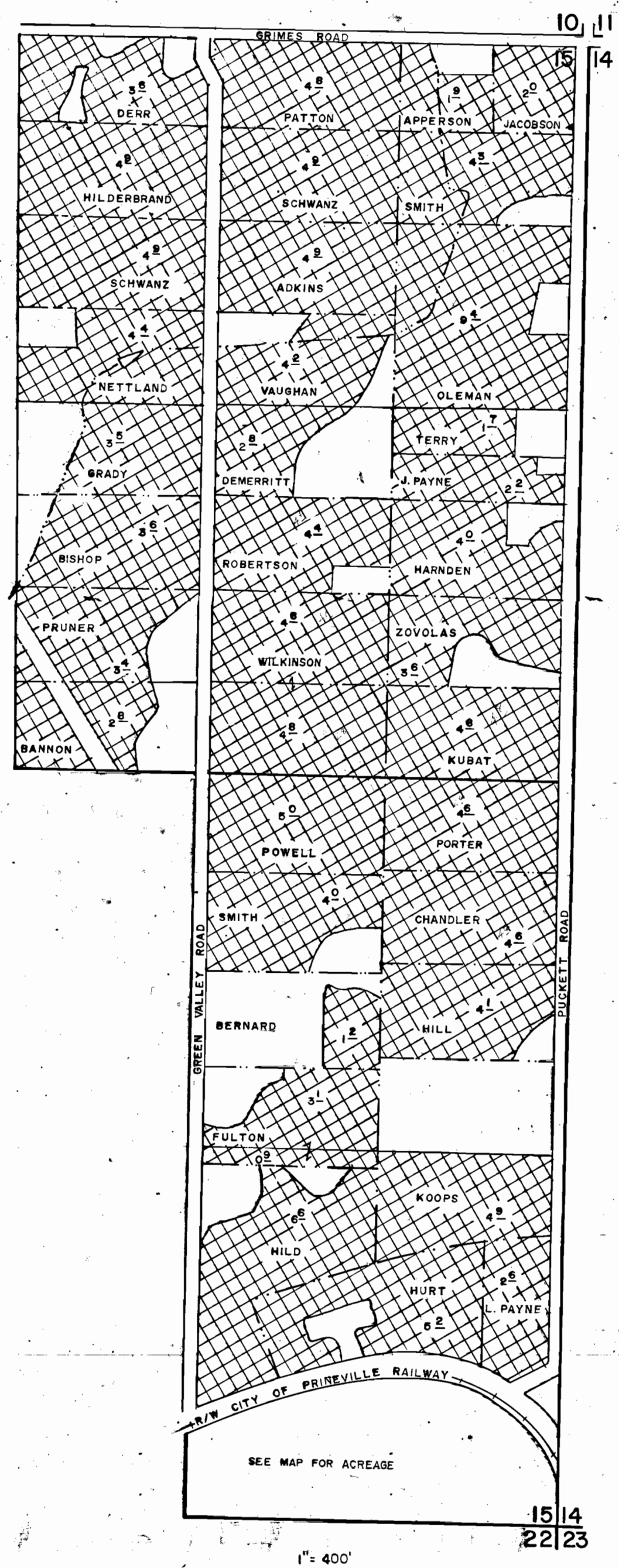
TOWNSHIP 14 SOUTH, RANGE 14 EAST, WM.



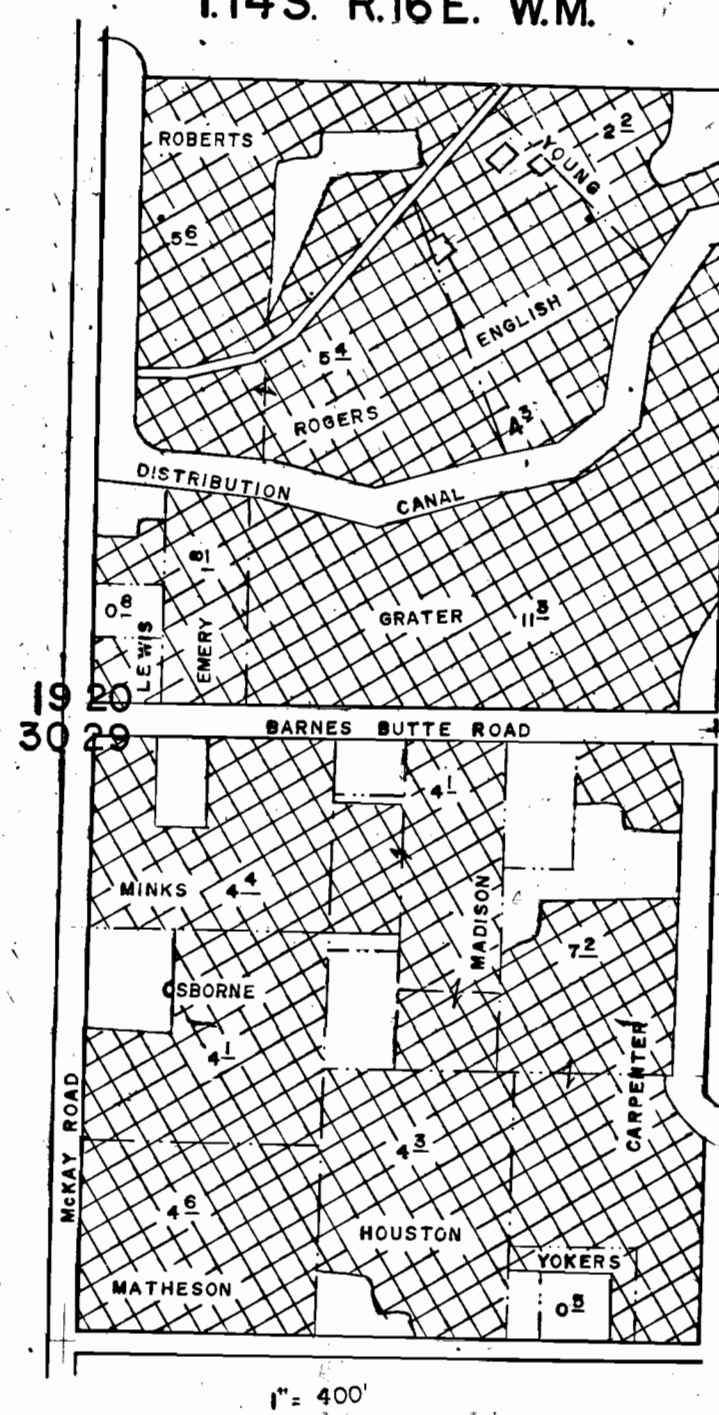
SEE SHEET 3

4" = 1 MILE

T.14S. R.15E. WM.

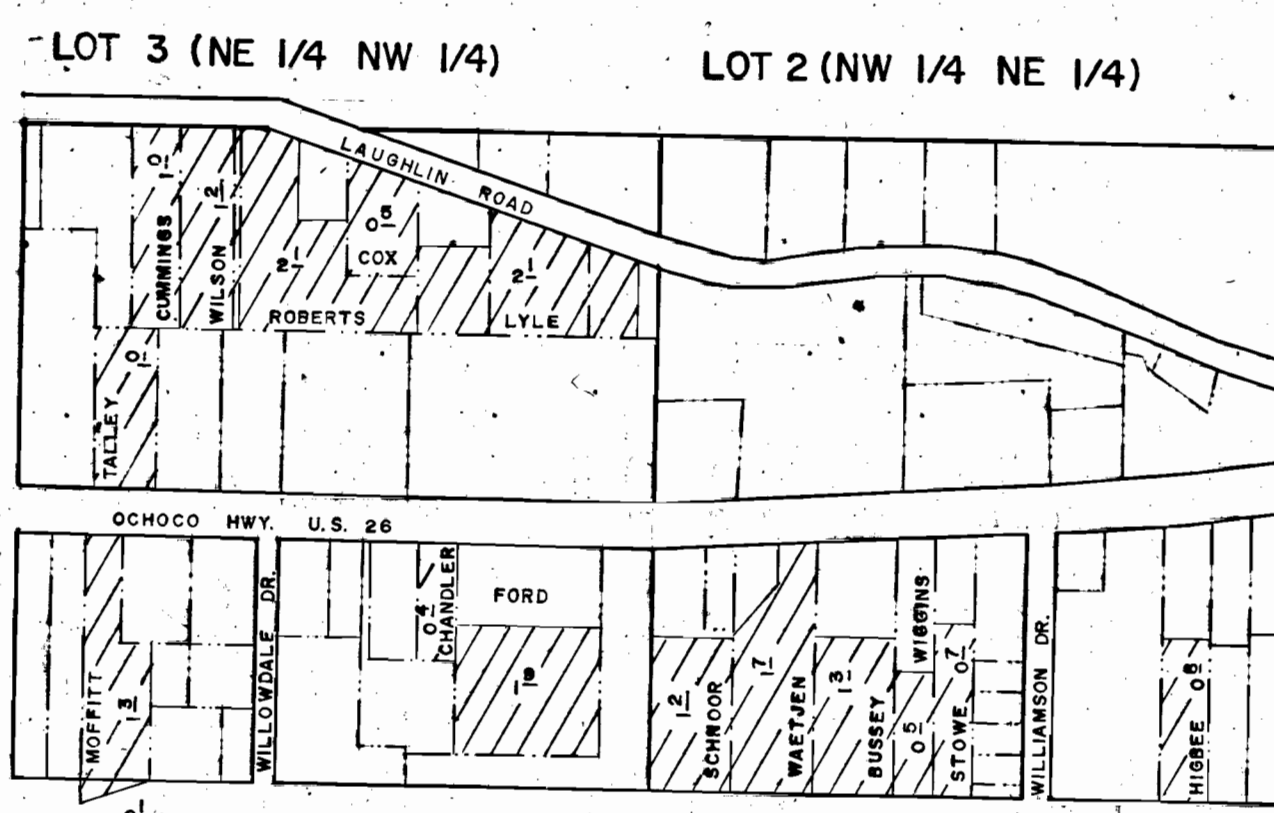


T.14S. R.16E. WM.

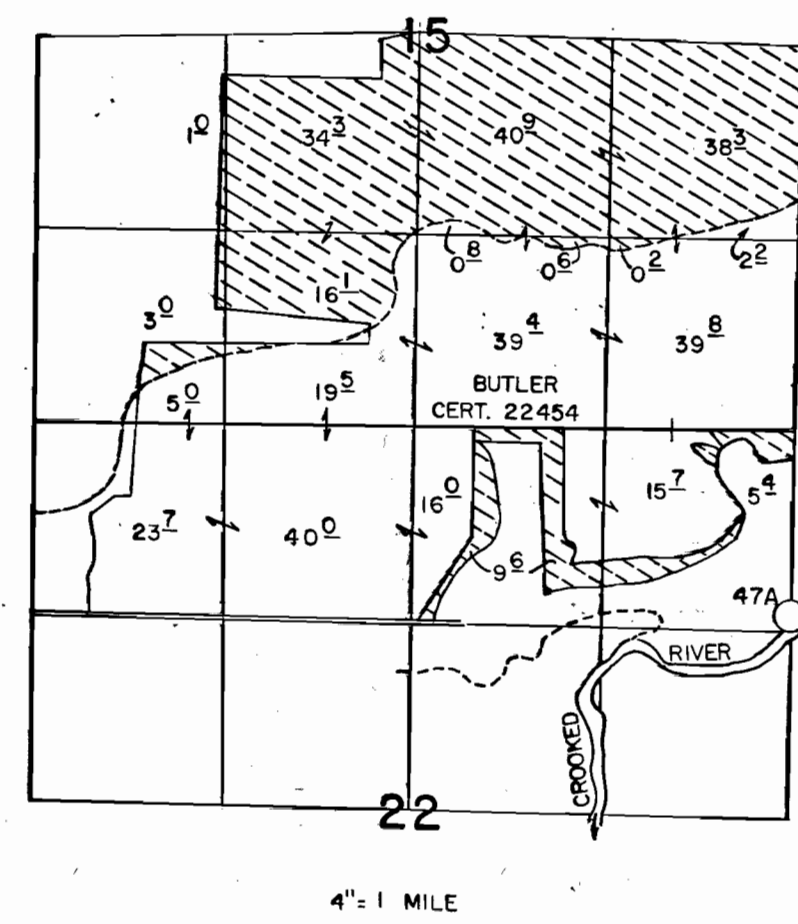


T.15S. R.16E. WM.

SEC. 4



T.14S. R.14E. WM.



FINAL PROOF SURVEY OF THE CROOKED RIVER PROJECT

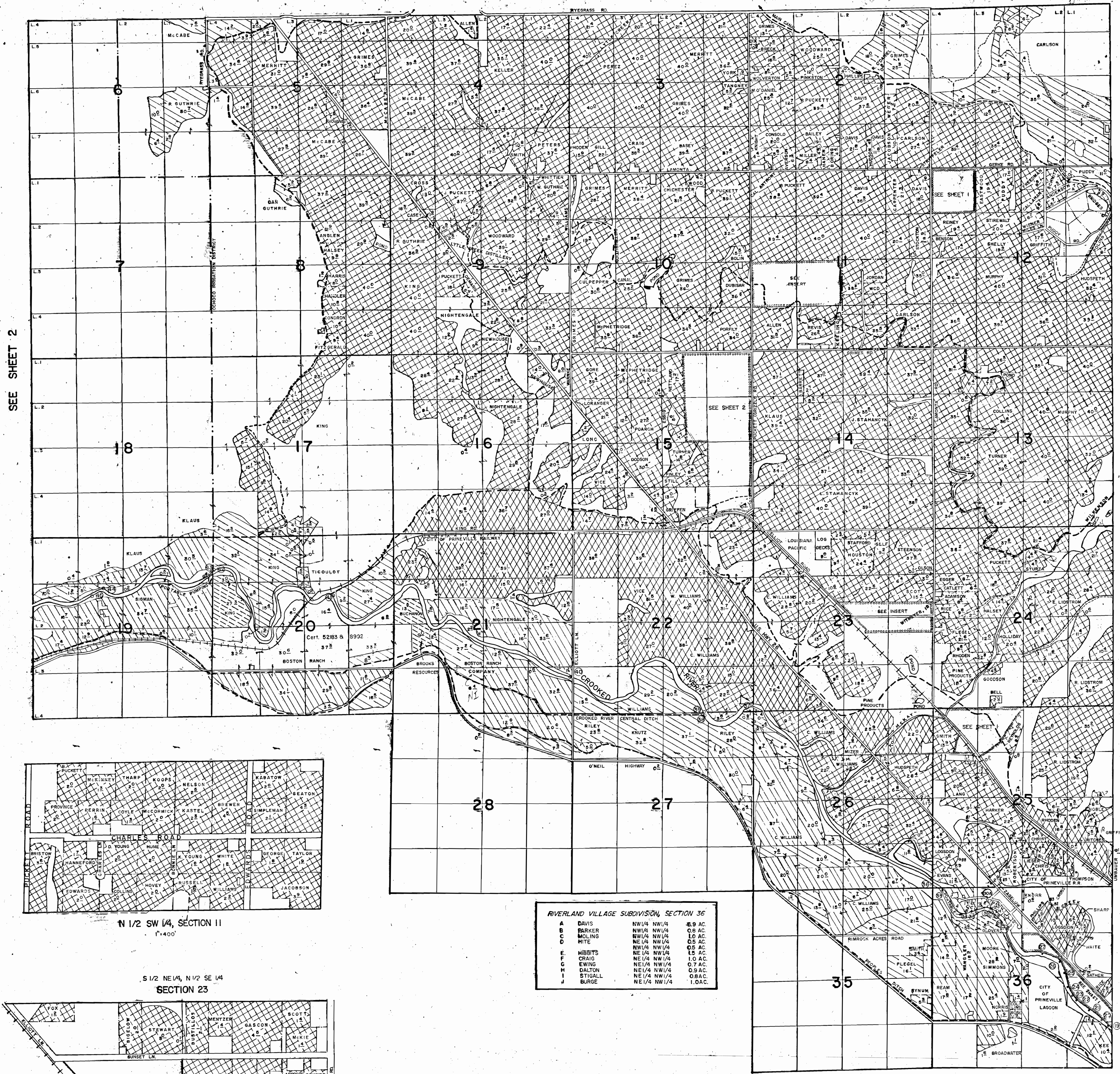
UNDER
APPLICATION 3587 PERMIT R-528
4788 5426
R-32640 R-2223
32641 25991

PERMIT 25991 PRIMARY from CROOKED RIVER
PERMIT 5426 PRIMARY from OCHOCHO RES. & CR SURVEYED JUNE, 1979 TO MARCH, 1980
SUPPLEMENTAL from OCHOCHO RES.
PERMIT 25991 PRIMARY from PRINEVILLE RES. & CROOKED R.
SUPPLEMENTAL from PRINEVILLE RES.
BY L.H. NUNN

SHEET 2 OF 5
REVISED 3 SEP 1980

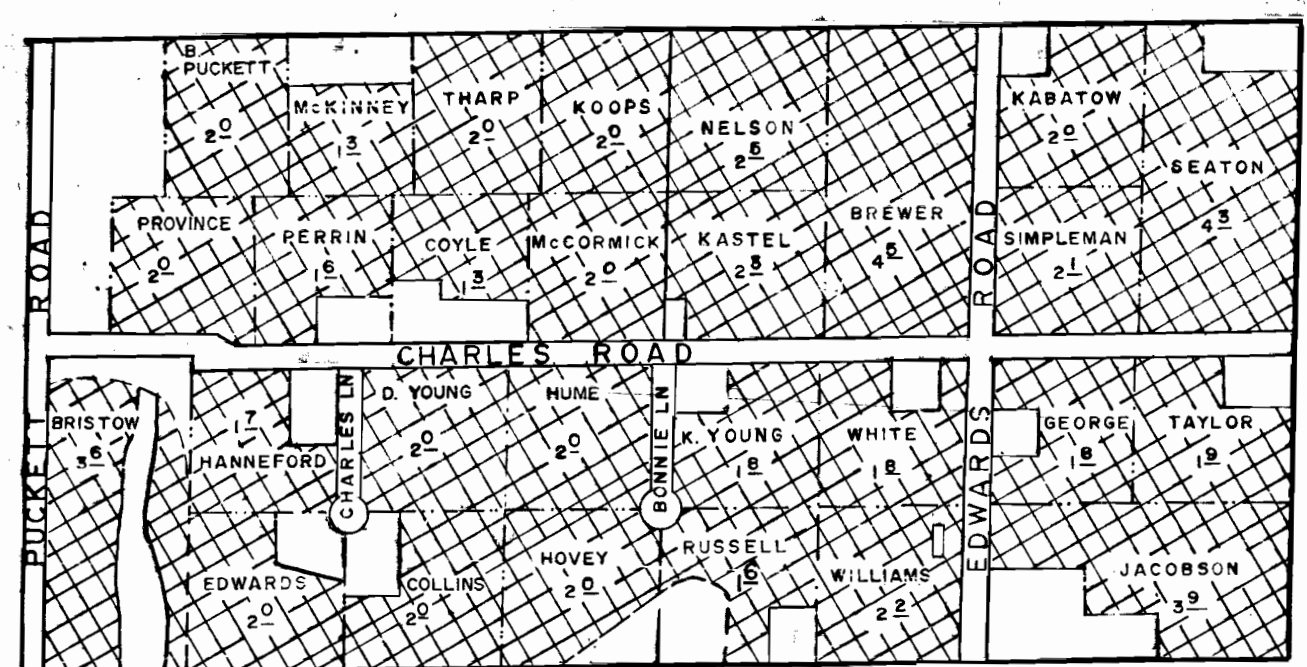
TOWNSHIP 14 SOUTH, RANGE 15 EAST, WM.

SEE SHEET 1



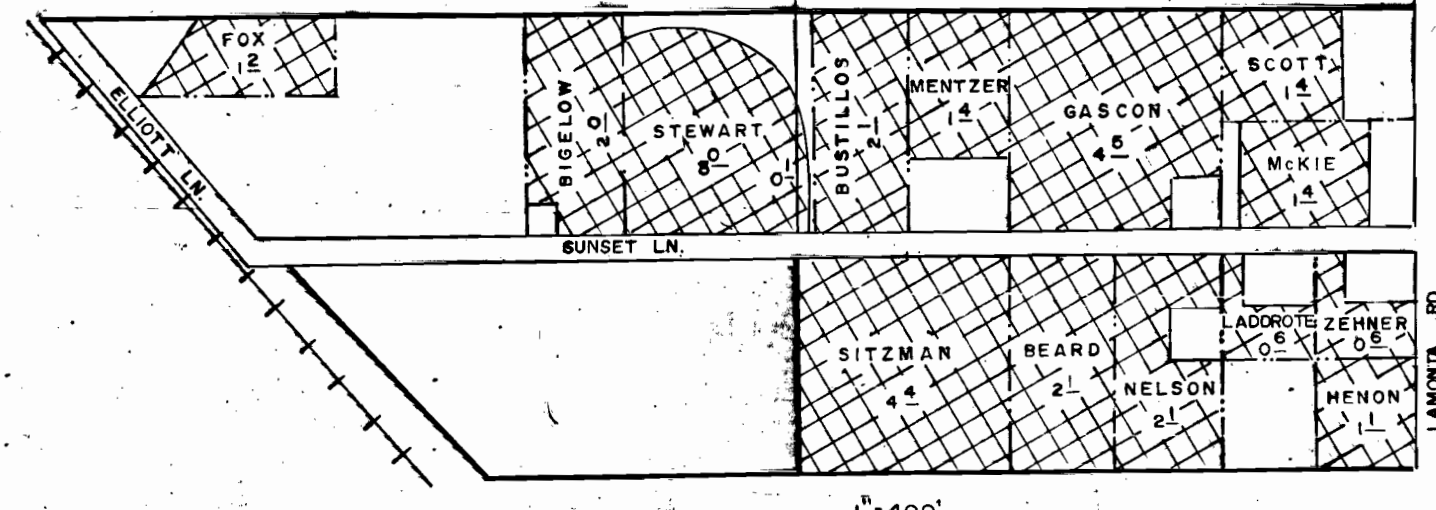
SEE SHEET 2

SEE SHEET 4



N 1/2 SW 1/4, SECTION 11
1"=400'

S 1/2 NE 1/4, N 1/2 SE 1/4
SECTION 23



1"=400'

RIVERLAND VILLAGE SUBDIVISION, SECTION 36

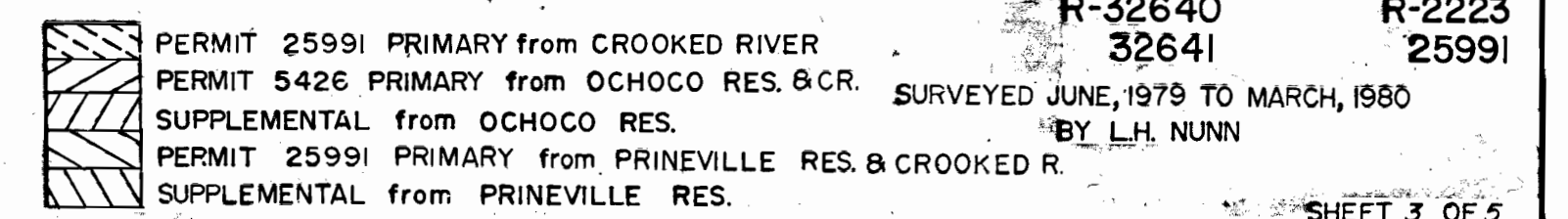
A	DAVIS	NW 1/4 NW 1/4	5.9 AC.
B	BARKER	NW 1/4 NW 1/4	0.8 AC.
C	MOLING	NW 1/4 NW 1/4	1.0 AC.
D	MITE	NE 1/4 NW 1/4	0.5 AC.
E	HIBBITS	NW 1/4 NW 1/4	1.5 AC.
F	CRAIG	NE 1/4 NW 1/4	1.0 AC.
G	EWING	NE 1/4 NW 1/4	0.7 AC.
H	DALTON	NE 1/4 NW 1/4	0.9 AC.
I	STIGALL	NE 1/4 NW 1/4	0.8 AC.
J	BURGE	NE 1/4 NW 1/4	1.0 AC.

FINAL PROOF SURVEY OF THE CROOKED RIVER PROJECT

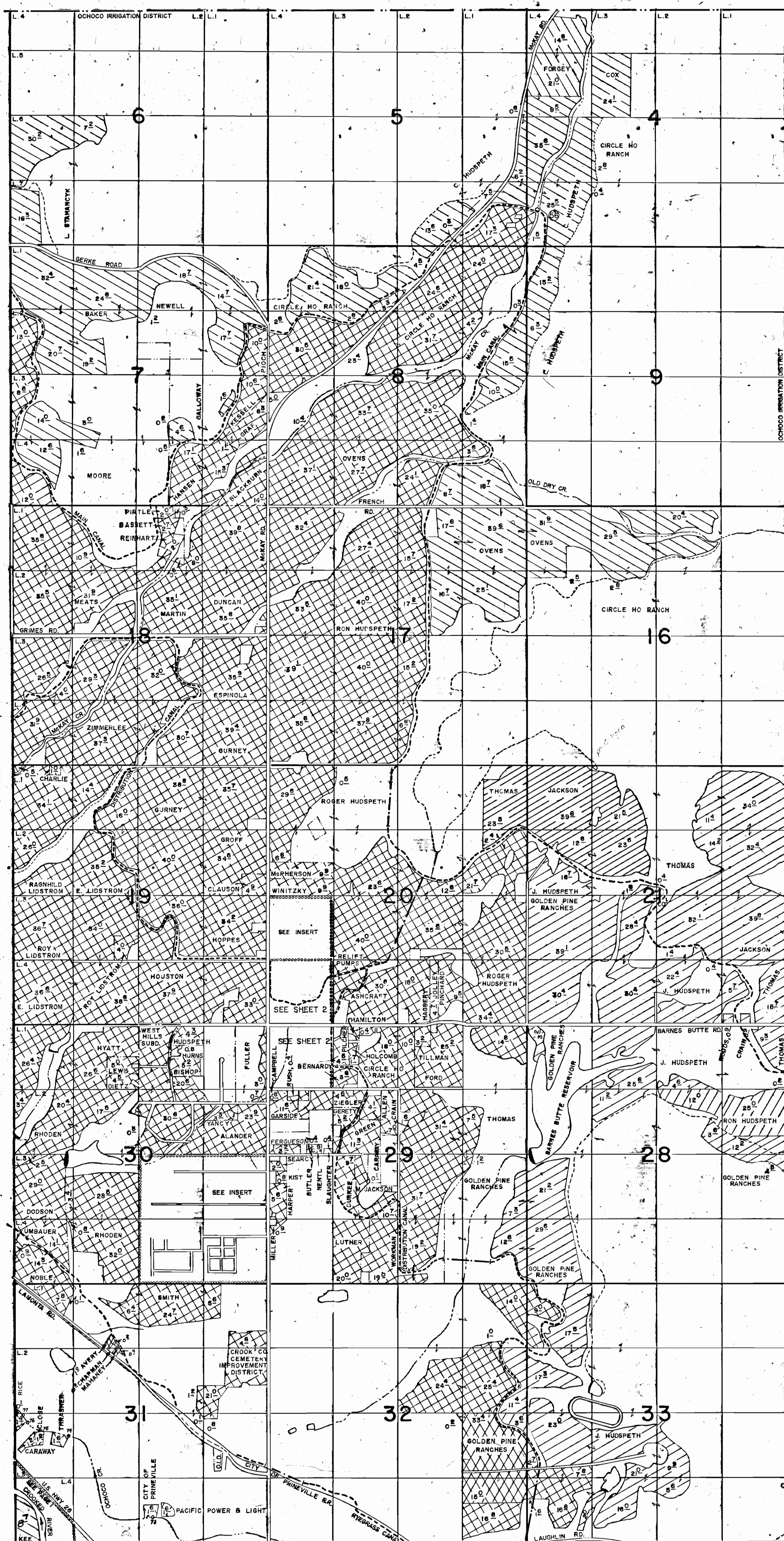
UNDER APPLICATION 3587 PERMIT R-528
4788 5426
R-32640 R-2223
32641 25991

PERMIT 25991 PRIMARY from CROOKED RIVER
PERMIT 5426 PRIMARY from OCHOCO RES. & C.R.
SUPPLEMENTAL from OCHOCO RES.
PERMIT 25991 PRIMARY from PRINEVILLE RES. & CROOKED R.
SUPPLEMENTAL from PRINEVILLE RES.

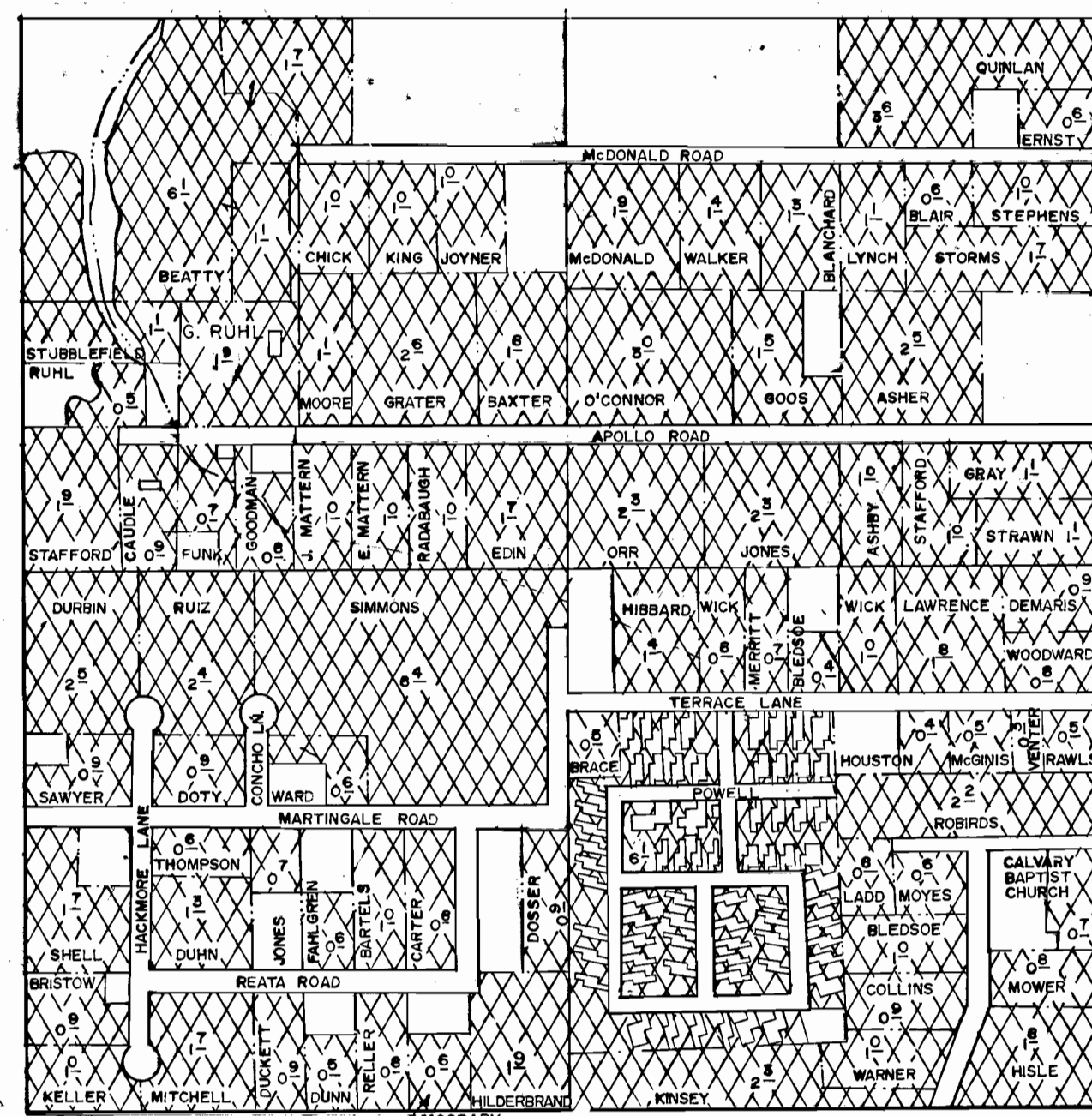
SURVEYED JUNE, 1979 TO MARCH, 1980
BY L.H. NUNN



TOWNSHIP 14 SOUTH, RANGE 16 EAST, WM.

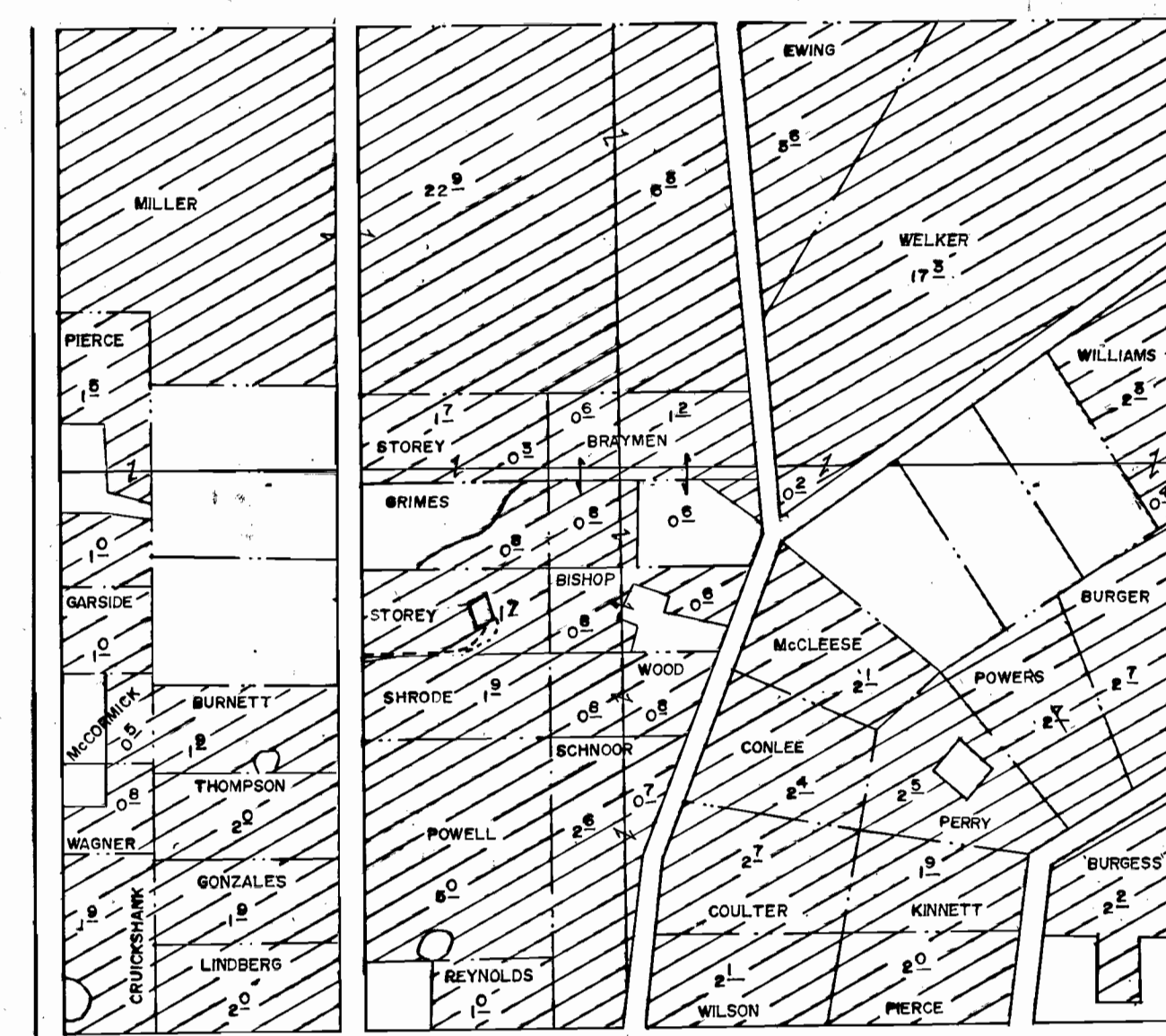


SE 1/4, SECTION 30



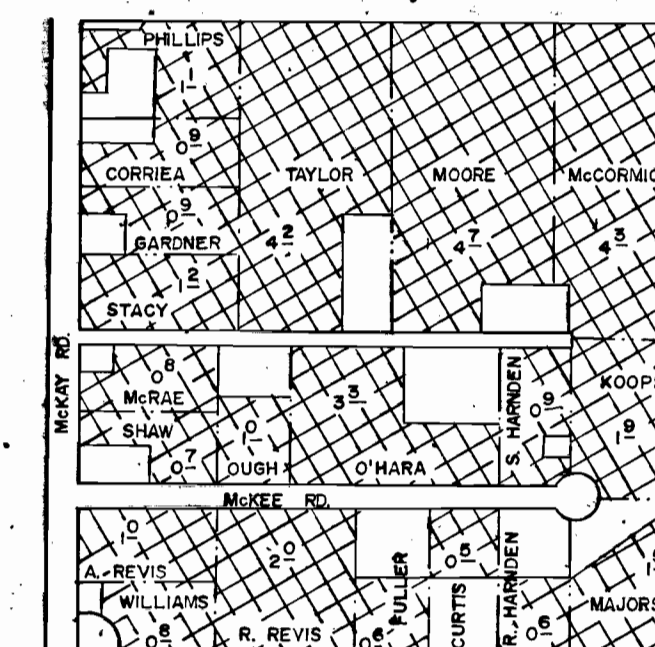
1"=400'

PART OF SE 1/4, SECTION 27



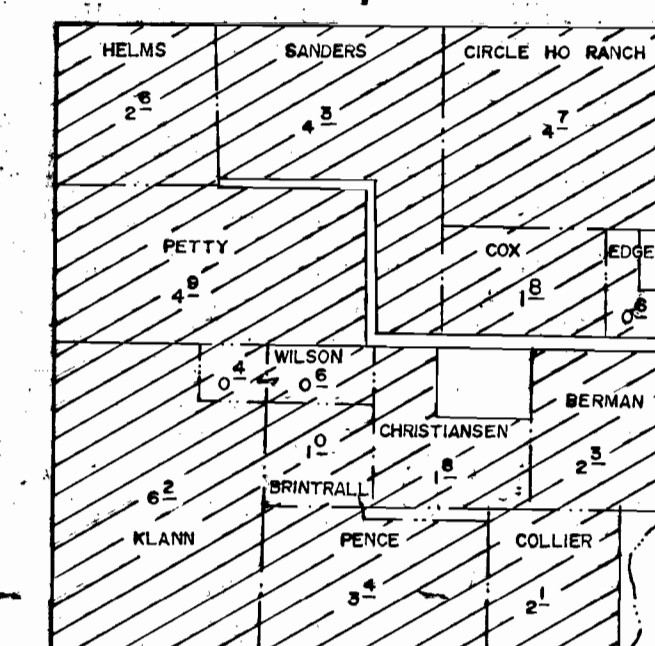
1"=400'

NW 1/4 SW 1/4, SECTION 20



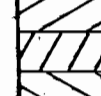
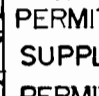
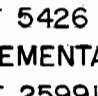
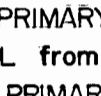
1"=400'

SE 1/4 NE 1/4, SECTION 26



1"=400'

SEE SHEET 5

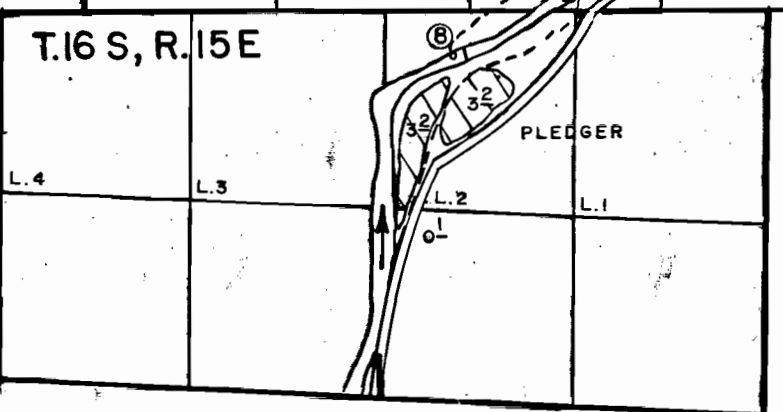
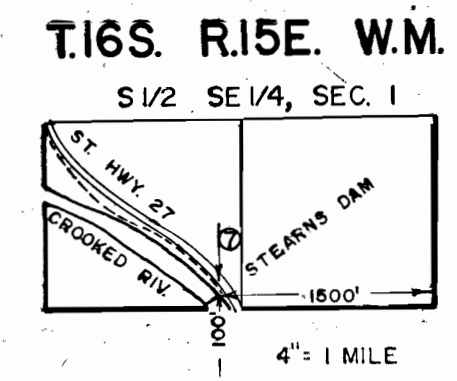
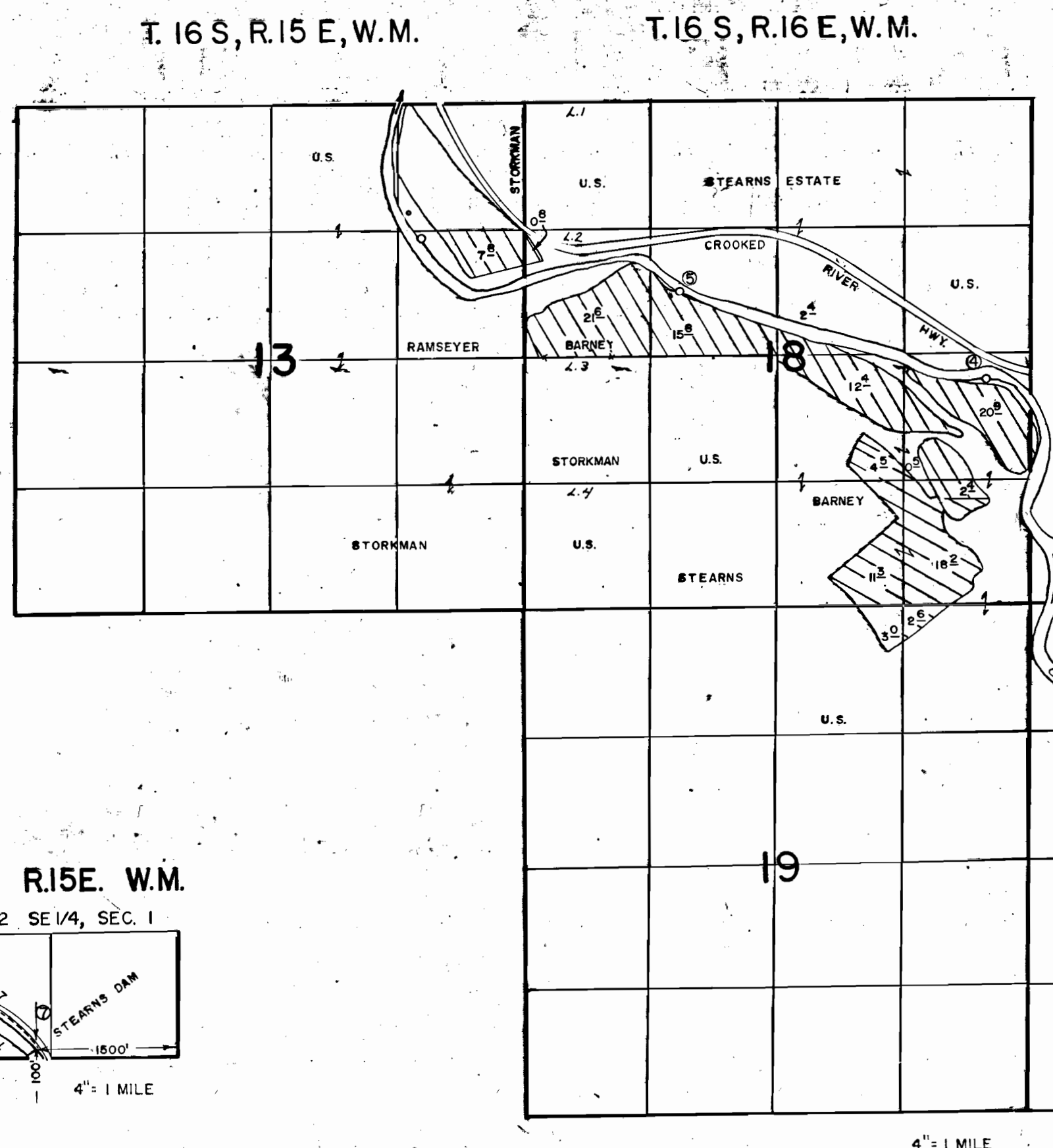
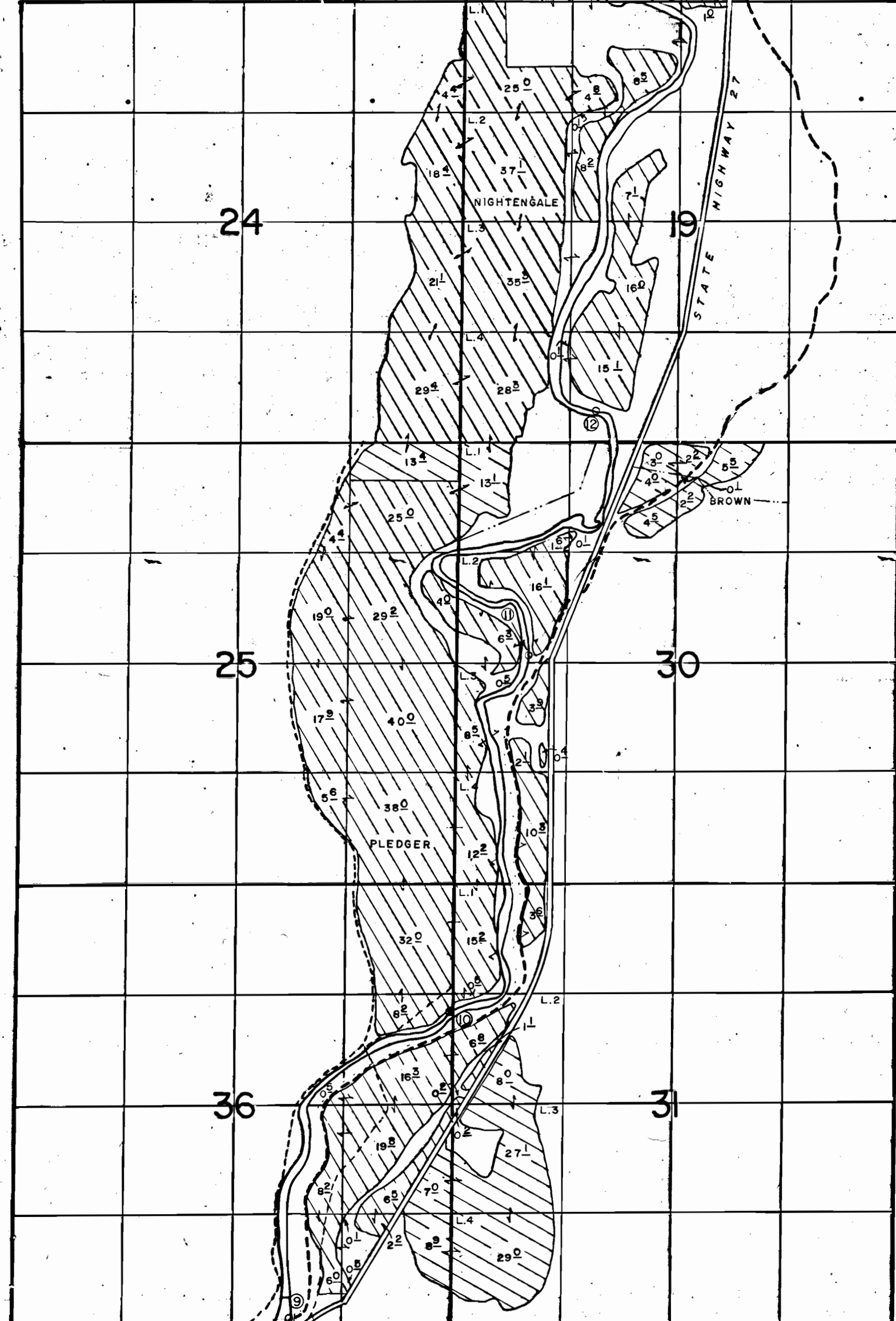
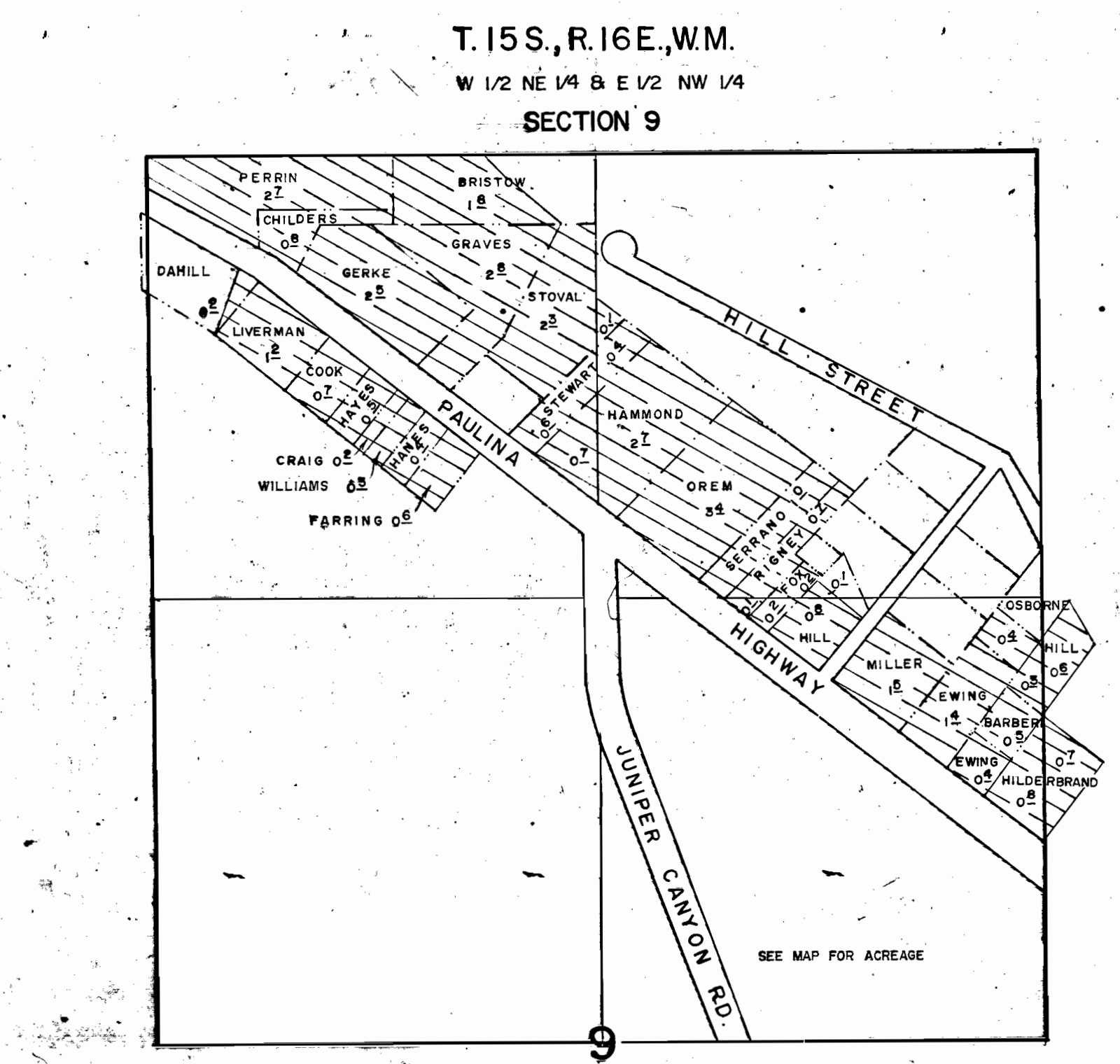
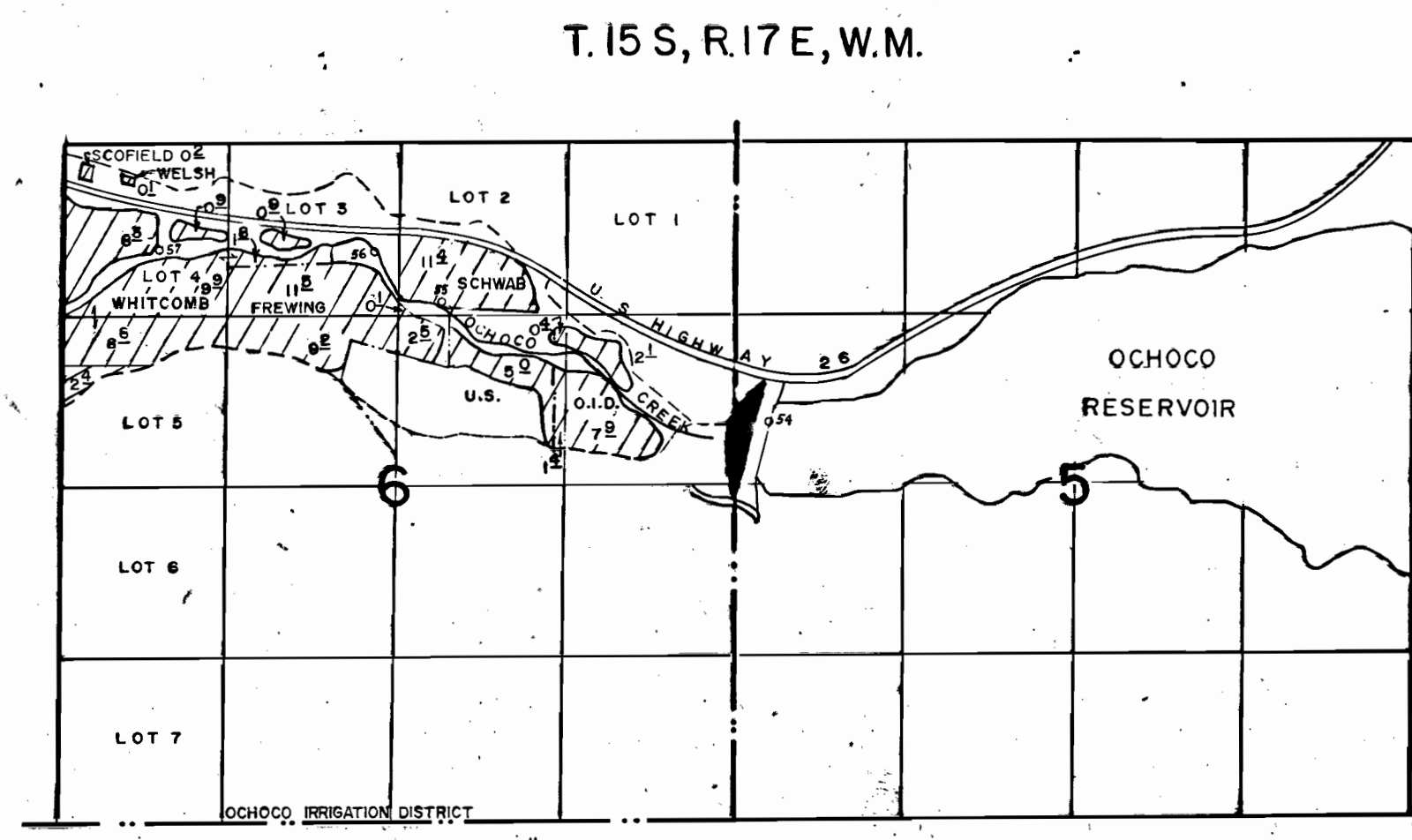
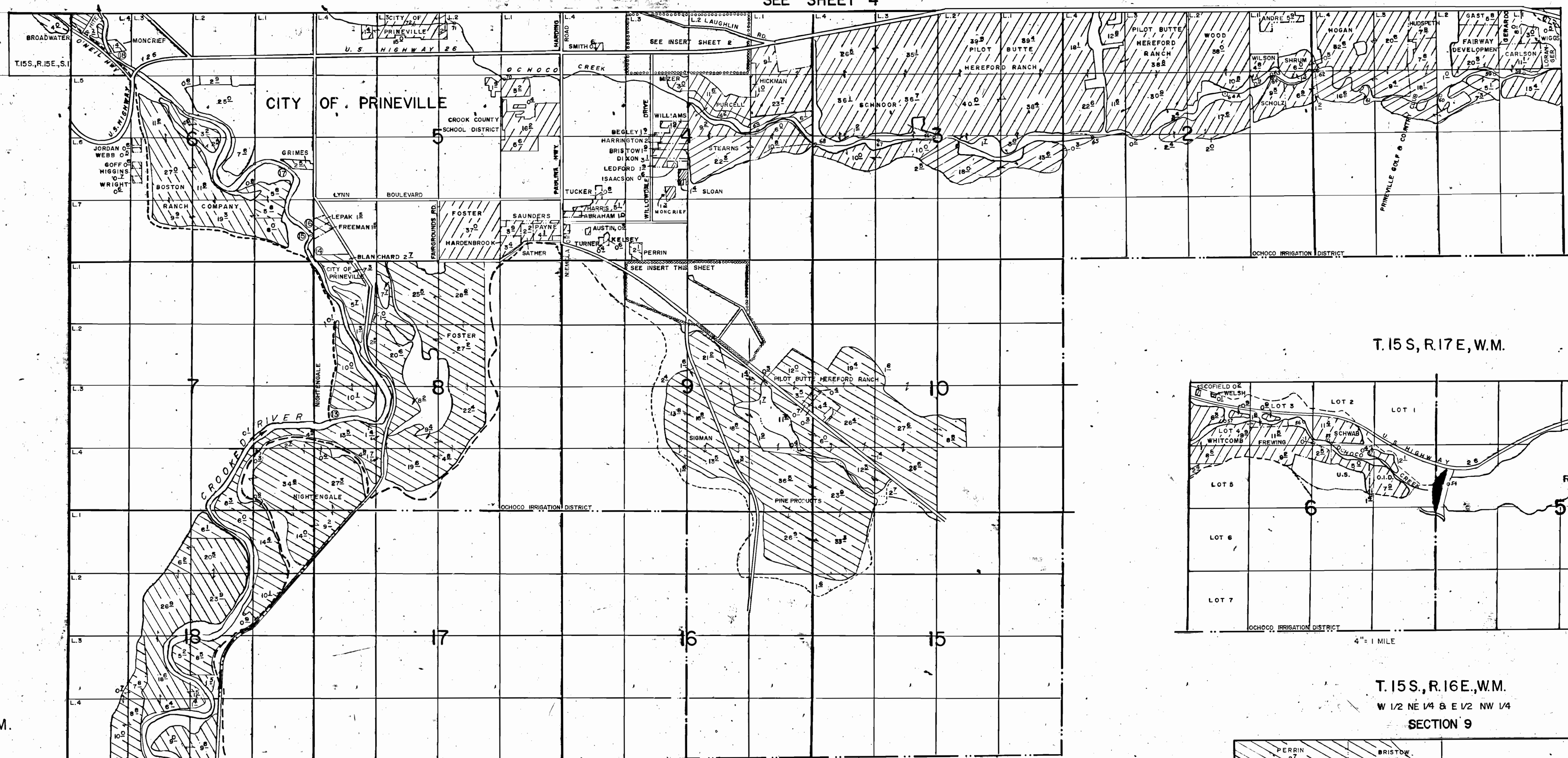
 PERMIT 5426 PRIMARY from OCHOCHO RES. & CREEK
 SUPPLEMENTAL from OCHOCHO RES.
 PERMIT 25991 PRIMARY from PRINEVILLE RES. & CROOKED RIVER
 SUPPLEMENTAL from PRINEVILLE RES.

FINAL PROOF SURVEY
OF THE
CROOKED RIVER PROJECT

UNDER
 APPLICATION 3587 PERMIT R-528
 4788 5426
 R-32640 R-2223
 32641 25991
 SURVEYED JUNE, 1979 TO MARCH, 1980
 BY L.H. NUNN

TOWNSHIP 15 SOUTH, RANGE 16 EAST, W.M.

SEE SHEET 4



FINAL PROOF SURVEY
OF THE
CROOKED RIVER PROJECT
UNDER
APPLICATION 3587 PERMIT R-528
4788 5426
R-32640 R-2223
32641 25991
PERMIT 5426 PRIMARY FROM OCHOCO RES. & CR. SURVEYED JUNE, 1979 TO MARCH, 1980
SUPPLEMENTAL FROM OCHOCO RES.
PERMIT 25991 PRIMARY FROM PRINEVILLE RES. & CROOKED R.
SUPPLEMENTAL FROM PRINEVILLE RES.

BY L.H. NUNN
APR. 1980
SHEET 3 OF 5

FINAL PROOF SURVEY
OF THE
CROOKED RIVER PROJECT
IN
CROOK COUNTY, OREGON

UNDER

APPLICATION R-32640 PERMIT R-2223
32641 25991
IN THE NAME OF

UNITED STATES OF AMERICA

ACTING THROUGH THE

BUREAU OF RECLAMATION

FROM

CROOKED RIVER AND PRINEVILLE RESERVOIR

APPLICATION 3587 PERMIT R-528
4788 5426
IN THE NAME OF

OCHOCO IRRIGATION DISTRICT

FROM

OCHOCO CREEK AND OCHOCO RESERVOIR

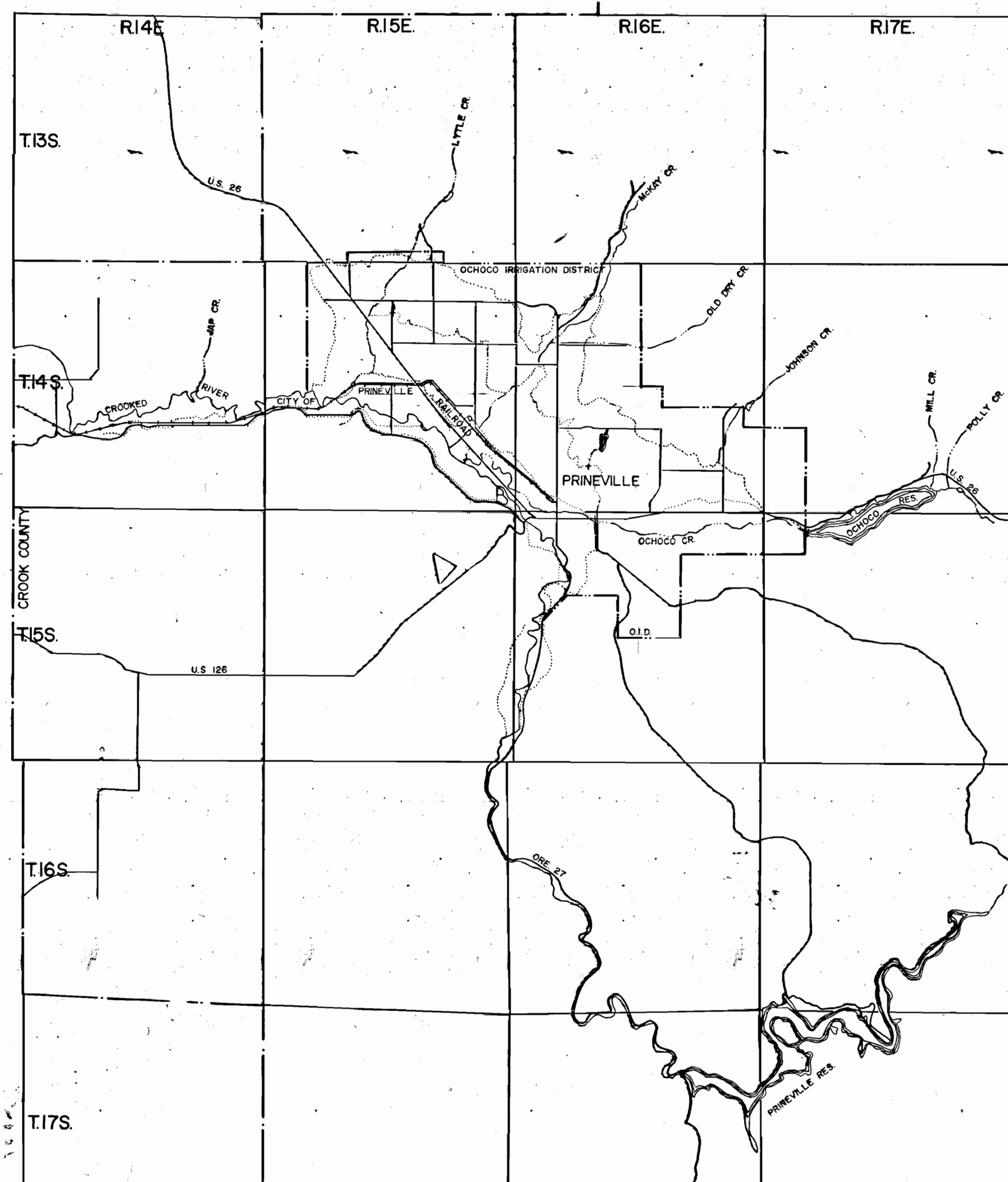
ALSO MCKAY, LYTLE AND JOHNSON CREEKS

SURVEYED JUNE, 1979 TO MARCH, 1980

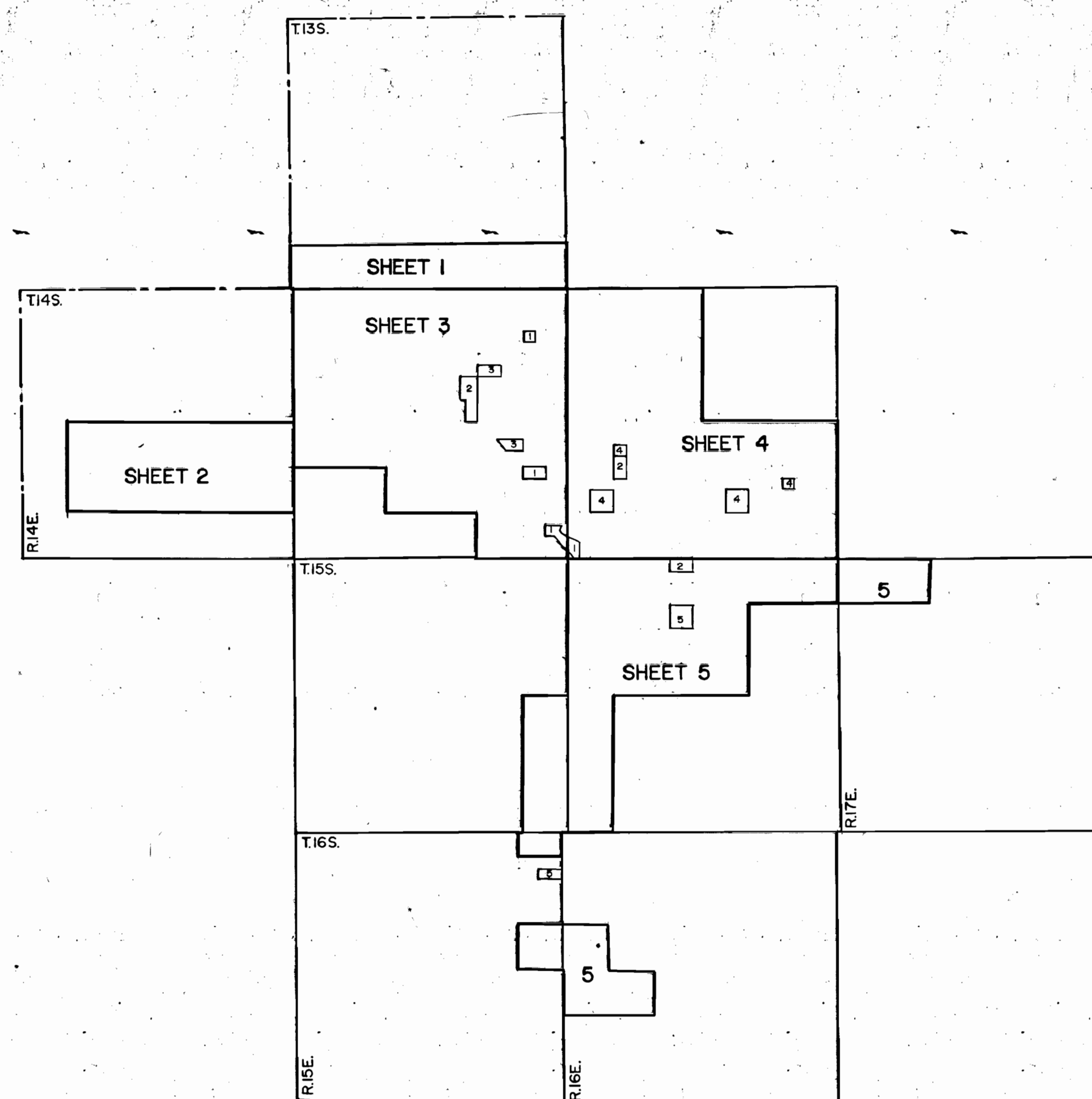
STATE OF OREGON

WATER RESOURCES DEPARTMENT

VICINITY MAP



INDEX



LEGEND

IRRIGATED LAND AND SOURCE

- CROOKED RIVER ONLY (without CONTRACT) PRIMARY
- OCHOCO CREEK & RESERVOIR PRIMARY
- OCHOCO CREEK & RESERVOIR SUPPLEMENTAL
- CROOKED RIVER & PRINEVILLE RESERVOIR PRIMARY
- CROOKED RIVER & PRINEVILLE RESERVOIR SUPPLEMENTAL

DOUBLE HACHURE INDICATES WATER FROM BOTH SOURCES
∞ INDICATES ACREAGE IRRIGATED

FEATURES

- RIVER
- CREEK OR STREAM
- INTERMITTENT STREAM OR WASTEWAY
- CANAL
- DITCH
- PIPE OR SIPHON
- DRAIN
- POND OR RESERVOIR
- DISTRICT BOUNDARY
- SUB-DISTRICT BOUNDARY
- PROPERTY LINE
- SECTION LINE
- 1/4-1/4 SECTION (40) LINE
- CONTIGUOUS OWNERSHIP MARKS

ENLARGEMENT, SEE INSERT ON PAGE INDICATED

SCALE

MAP: 1"=1320' (4"=1 MILE)
DETAIL MAP: 1"=400'

SURVEYED BY L.H. NUNN
AERIAL PHOTO WAC-985-DV-77 AND PTS II-1979-A AND B

E-32-5