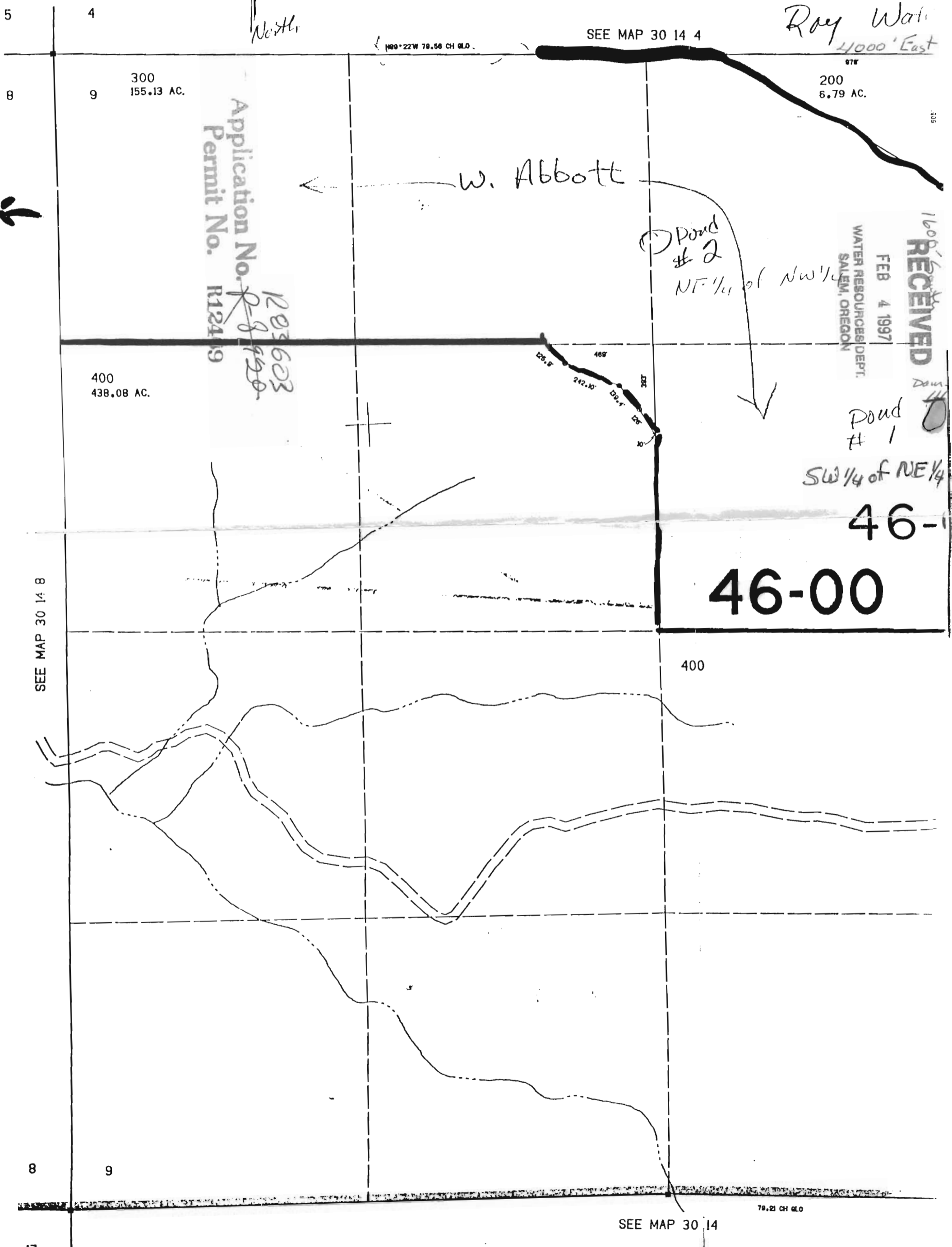


JAN 3 1 1997

SECTION 9 T.30S. R.14W. W.M.
COOS COUNTY

1"=400'

CR



Roy Water
4000' East

SEE MAP 30 14 4



N89°22'W 79.56 CH. G.L.O.

200
6.79 AC.

300
155.13 AC.

Application No. R-8-9-920
Permit No. R12419

W. Abbott

Pond # 2
NE 1/4 of NW 1/4

RECEIVED
FEB 4 1997
WATER RESOURCES DEPT.
SALEM, OREGON

Pond # 1
SW 1/4 of NE 1/4

400
438.08 AC.

46-00

SEE MAP 30 14 8

400

79.21 CH. G.L.O.

SEE MAP 30 14