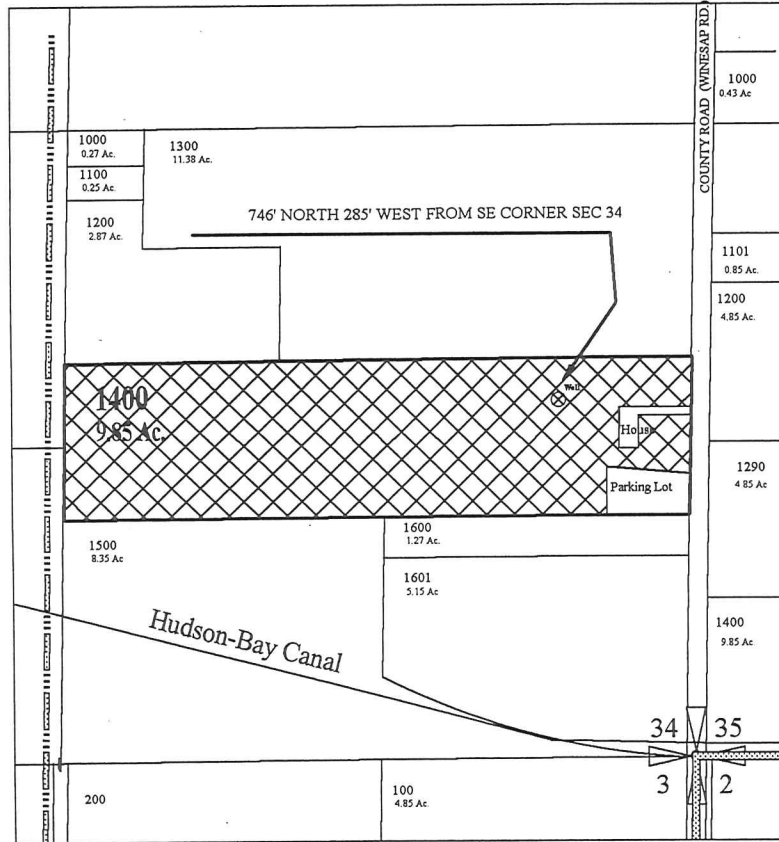


G-15104  
 § 13975



6N 35E 34  
 SE1/4 SE1/4

1" = 400'



NORTH



Proposed new well right  
 9.35 acres Supplemental



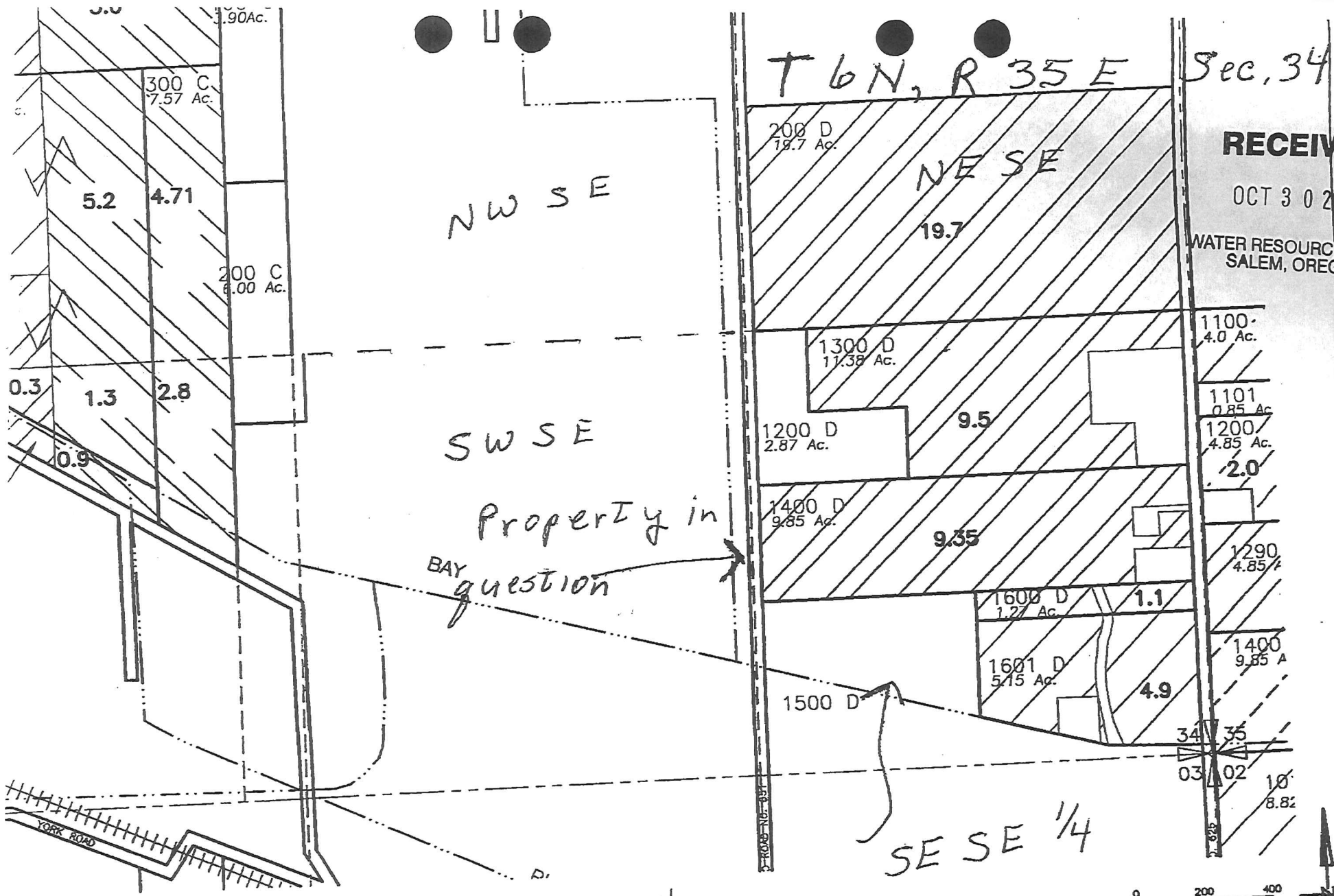
Existing Surface Right  
 Permit # 43973  
 1978  
 9.35 acres

WATER RESOURCES DEPT.  
 SALEM, OREGON

MAR 14 2000

RECEIVED

G-13975



**RECEIVED**  
 OCT 30 2000  
 WATER RESOURCES DEPT.  
 SALEM, OREGON

Application No. 915104  
 Permit No. 913979



G-13979

**BAY DISTRICT IMPROVEMENT CO.**

**SCM** Architects & Engineers  
 Consultants, Inc. Kennewick, WA 99336  
 4401.010 635-345.DWG 8/16/00