

N 27 T.33S. R.6W. W. M.
JOSEPHINE COUNTY

555 - 6W - 27

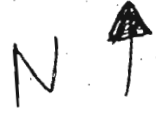
Josephine County

Blossom Bar Pond

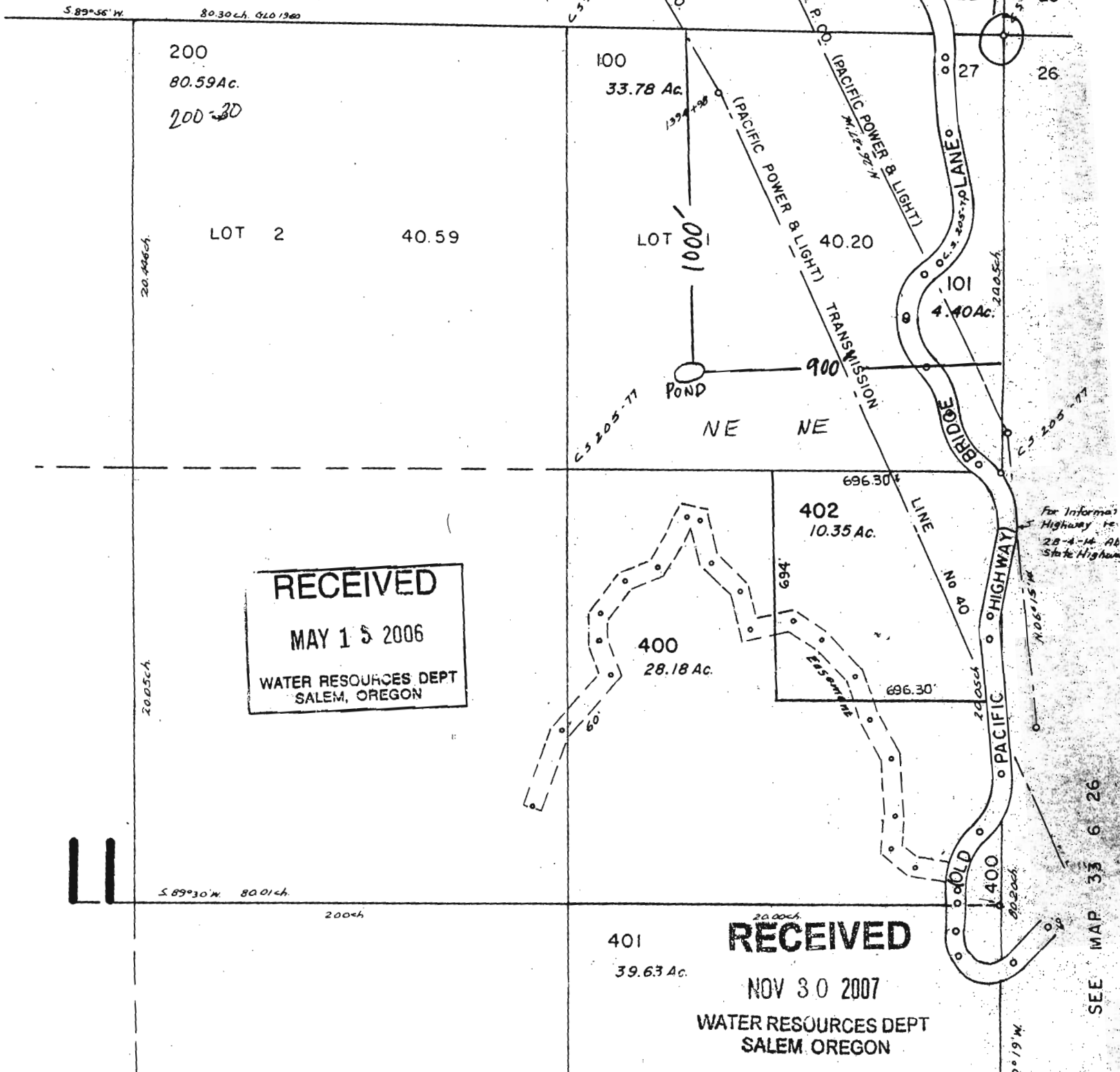
1000' South
900' West
from NE 1/4 Corner

NE 1/4 CORNER
Section 27

1" = 400' SCALE
APP NO. R-86598
Permit No. R-14311



SEE MAP 33 6 22



RECEIVED
MAY 15 2006
WATER RESOURCES DEPT
SALEM, OREGON

RECEIVED
NOV 30 2007
WATER RESOURCES DEPT
SALEM, OREGON

SEE MAP 33 6 26