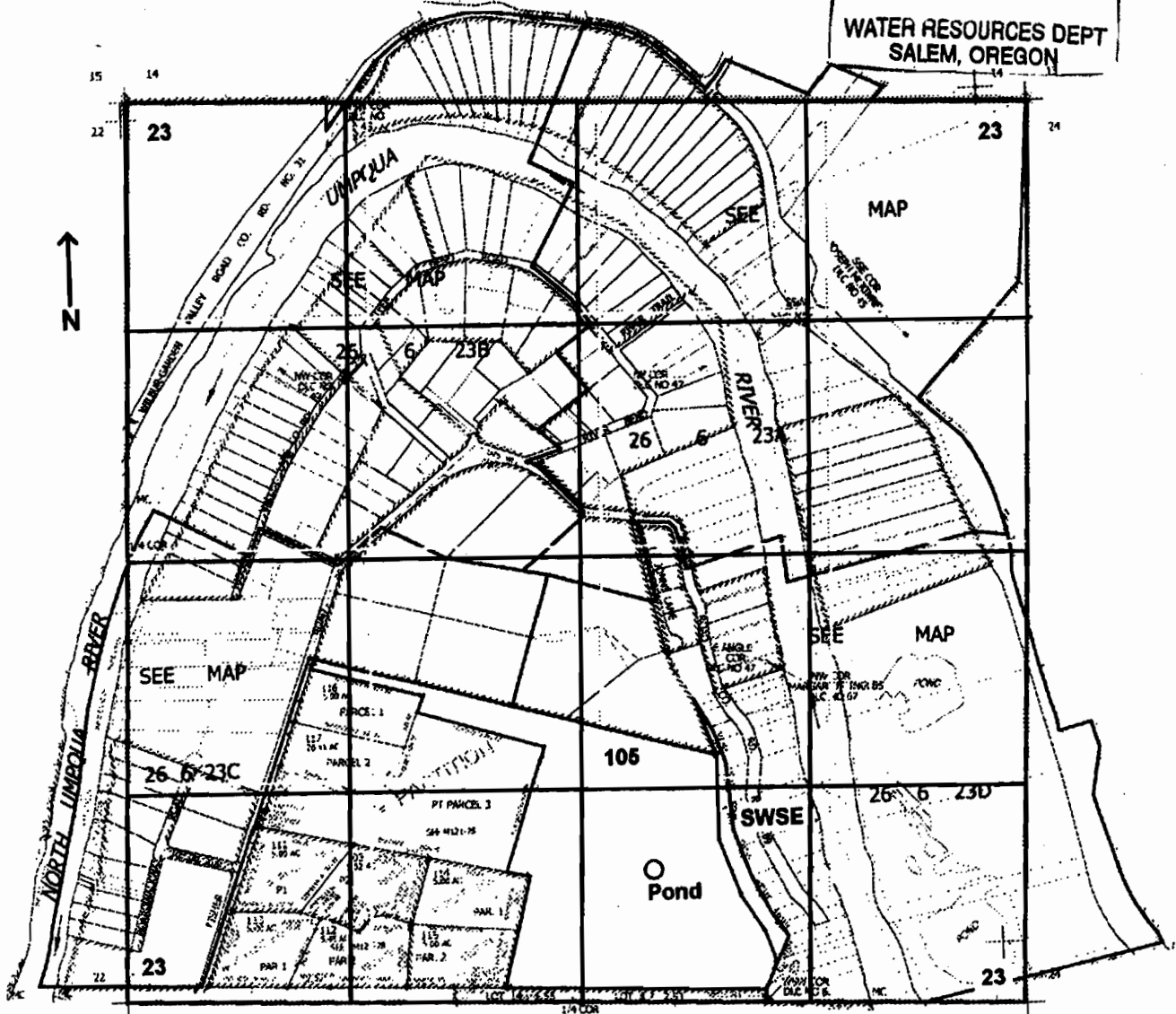


SEC. 23 T. 26S. R. 6W. W.M.
DOUGLAS COUNTY
Scale: 1" = 1000'

RECEIVED

MAY 06 2005

WATER RESOURCES DEPT
SALEM, OREGON



Pond is located 780 ft. N. and 420 ft. E. from the S. 1/4 corner of Sec. 23

app # R 86299
Permit # R 14246

RECEIVED

FEB 07 2006

WATER RESOURCES DEPT
SALEM, OREGON