

EXHIBIT "A"

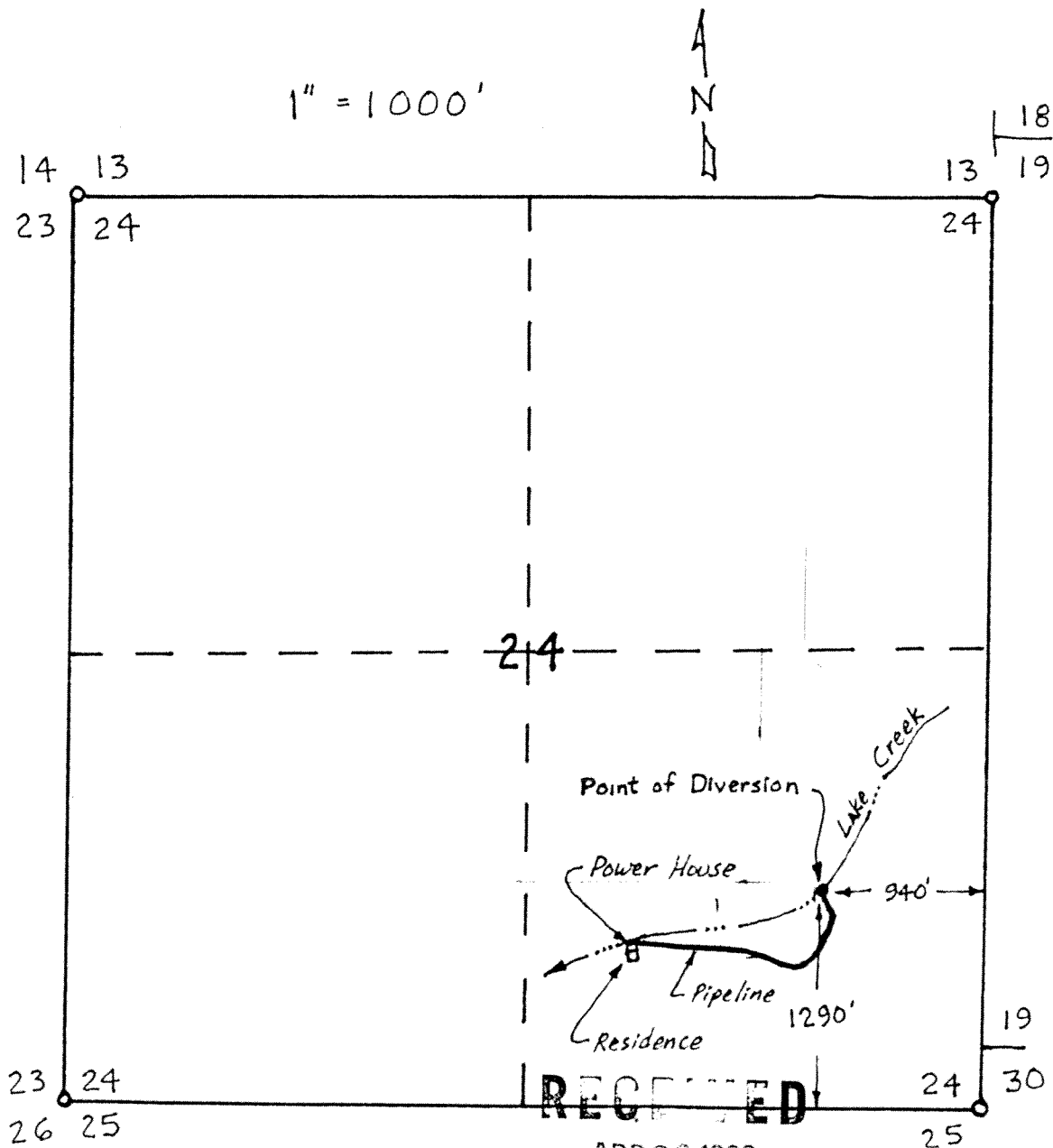
Lower Lake Creek Hydroelectric Project

Jack M. Goldwasser

April 1982

Section 24

Township 39 South Range 7 West, W.M.



RECEIVED

APR 29 1982

WATER RESOURCES DEPT
SALEM, OREGON

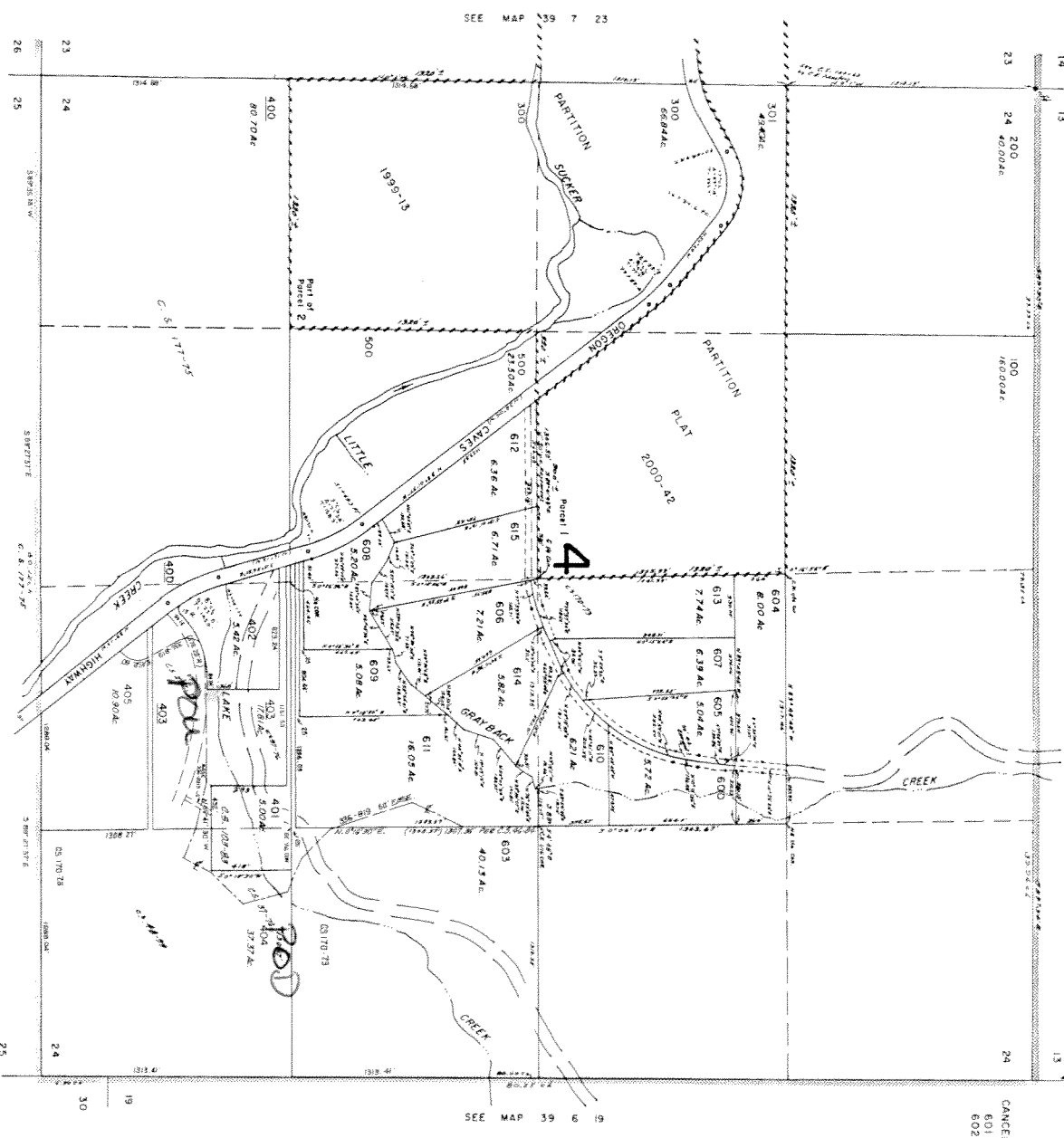
HE 398

This map was prepared for assessment purposes only.

JOSEPHINE COUNTY

1" = 400'

SEE MAP 39 7 13



SEE MAP 39 7 23

SEE MAP 39 7 25

SEE MAP 39 7 25

CANCELLED TL.
601
602