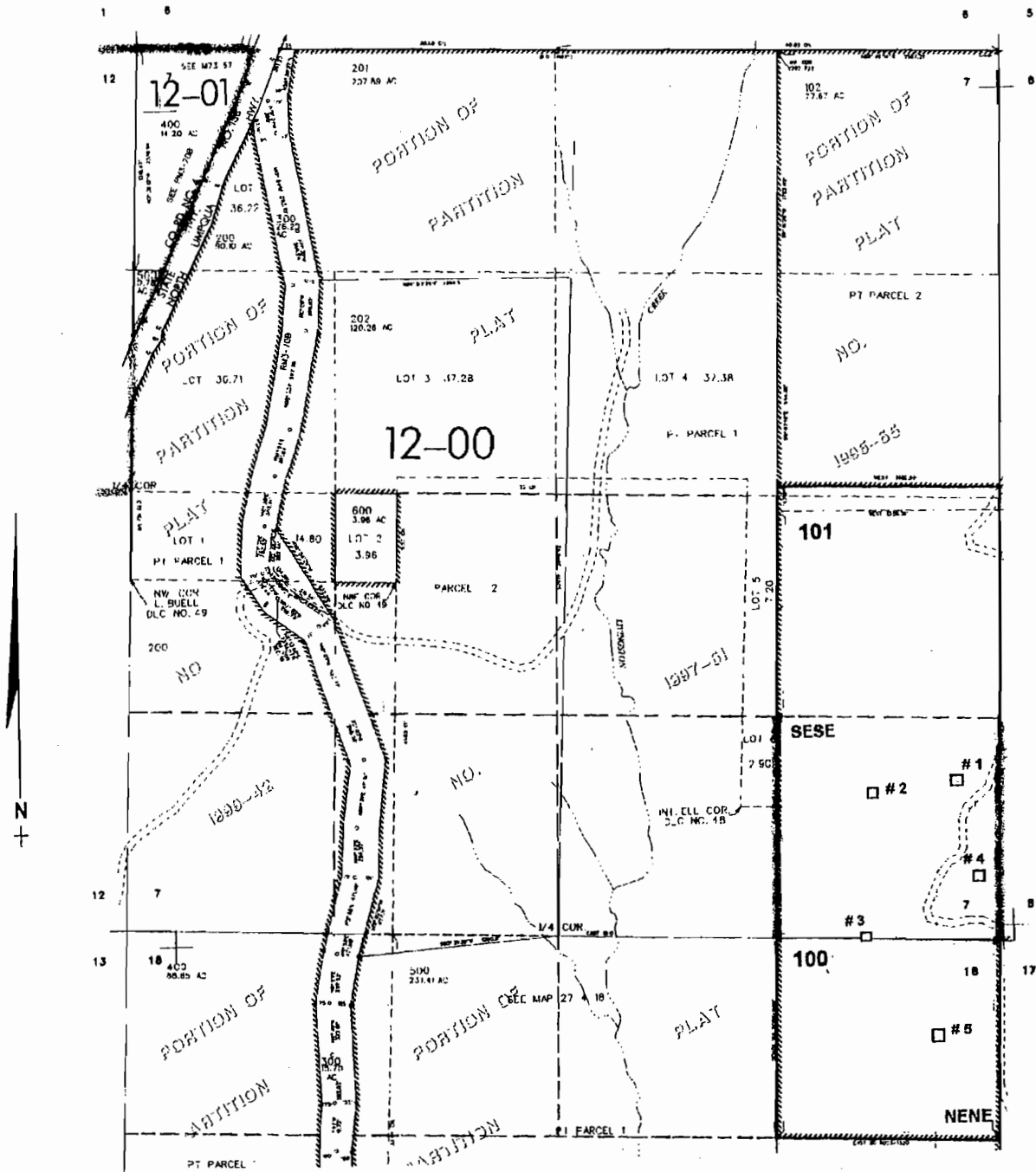


T.27S. R.4 W W.M.  
DOUGLAS COUNTY  
Scale: 1" = 1000'

# 1  
Daisy Reservoir



- Pond # 1 - 950 ft. N. & 250 ft. W. }
  - # 2 - 850 ft. N. & 760 ft. W. }
  - # 3 - 800 ft. W. }
  - # 4 - 400 ft. N. & 150 ft. W. }
  - # 5 - 550 ft. S. & 350 ft. W. }
- } all from the SE corner of Sec. 7

app # R-85606  
Permit # R-13706

**RECEIVED**  
MAY 20 2003

WATER RESOURCES DEPT.  
SALEM, OREGON

**RECEIVED**

OCT 05 2007

WATER RESOURCES DEPT  
SALEM, OREGON