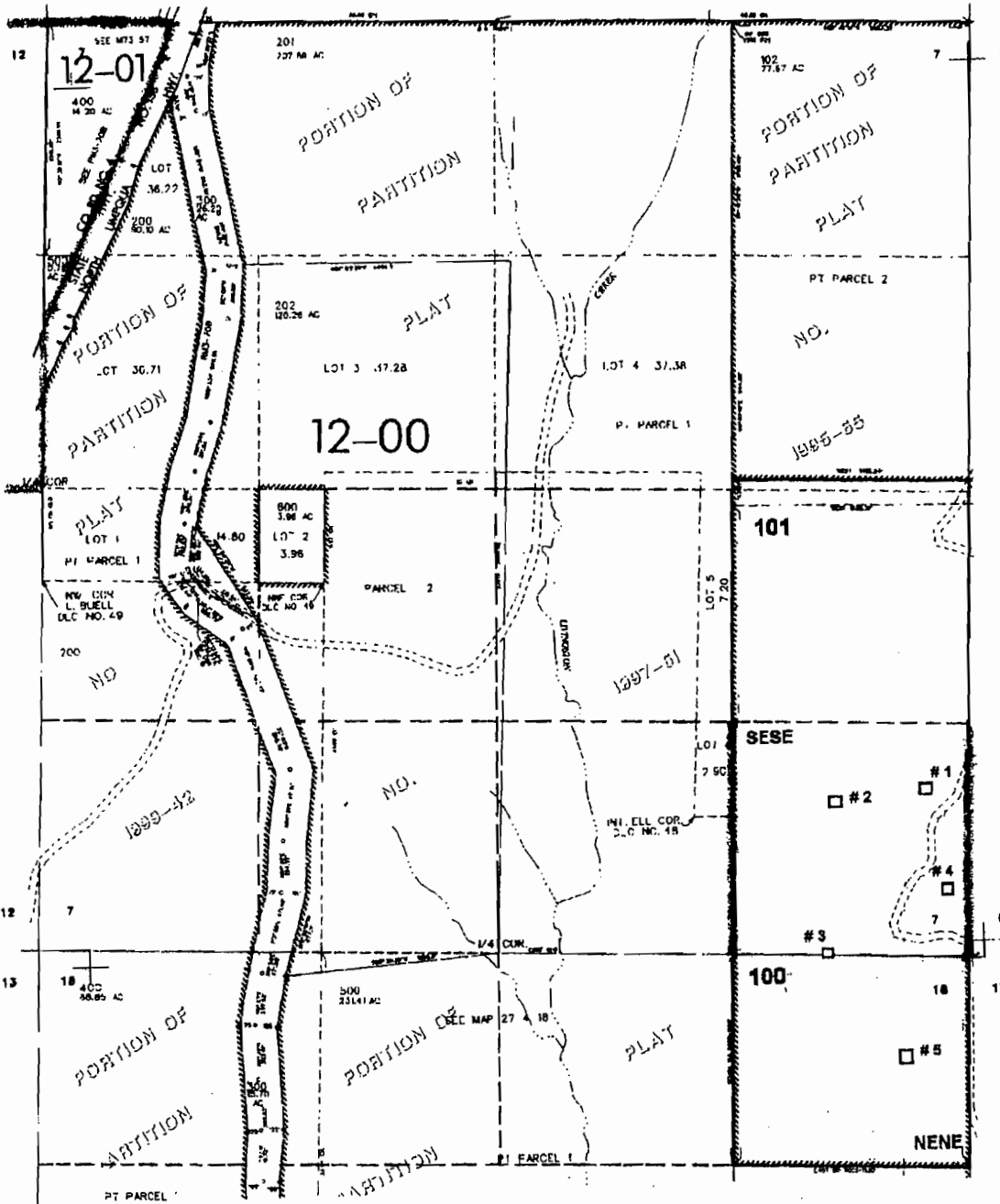


T.27S. R.4 W. W.M.  
DOUGLAS COUNTY  
Scale: 1" = 1000'

#2  
Ginger  
Reservoir



- Pond # 1 - 850 ft. N. & 250 ft. W. )  
 # 2 - 850 ft. N. & 780 ft. W. ) all from the SE corner of Sec. 7  
 # 3 - 800 ft. W. )  
 # 4 - 400 ft. N. & 150 ft. W. )  
 # 5 - 680 ft. S. & 380 ft. W. )

**RECEIVED**

MAY 20 2003

WATER RESOURCES DEPT.  
SALEM, OREGON

APP # R-85607  
Permit # R-13707

**RECEIVED**

MAY 03 2007

WATER RESOURCES DEPT.  
SALEM, OREGON