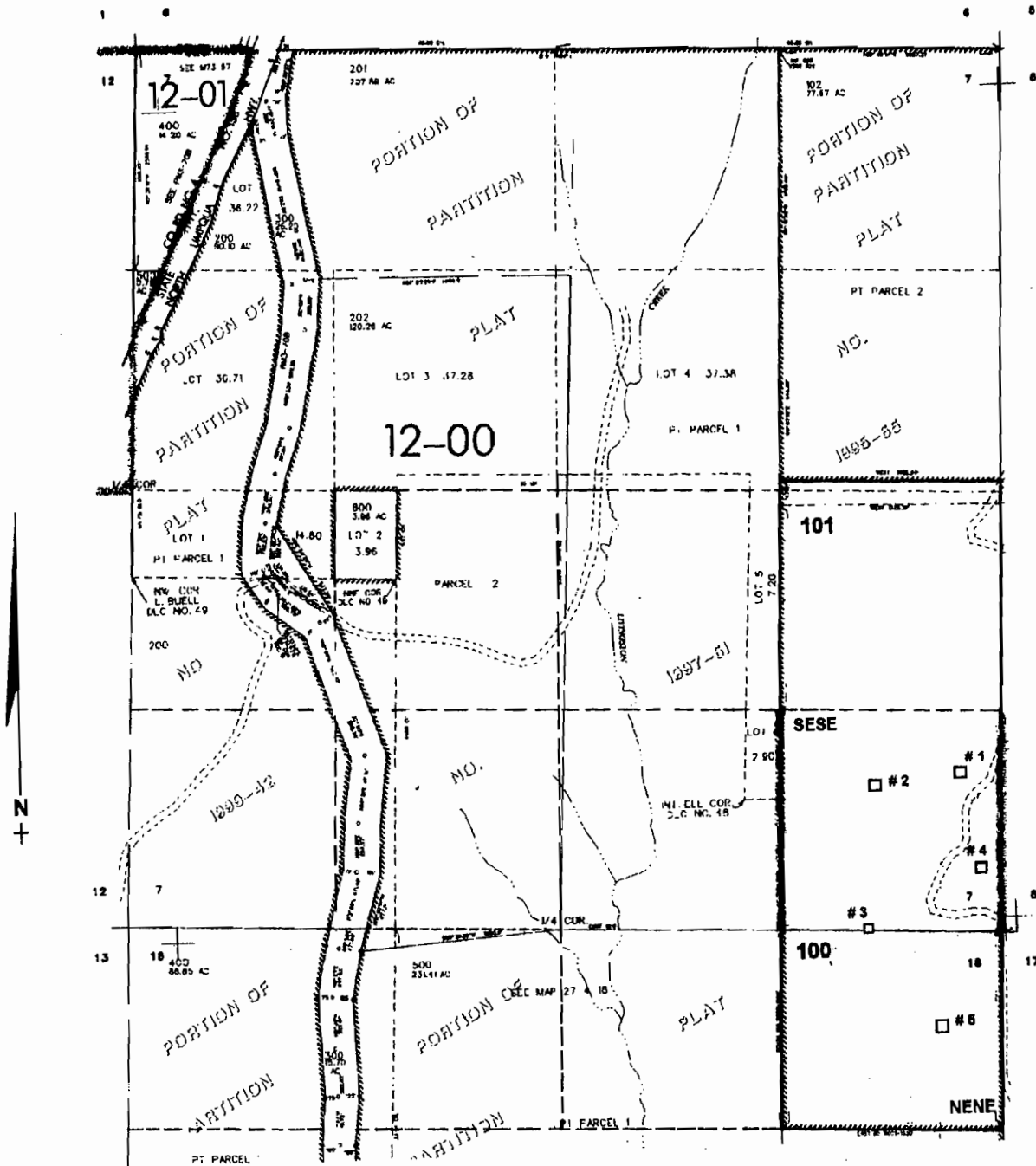


T.27S. R.4 W W.M.  
DOUGLAS COUNTY  
Scale: 1" = 1000'

# 5  
Rosy  
Reservoir



- Pond # 1 - 950 ft. N. & 260 ft. W. }
  - # 2 - 950 ft. N. & 780 ft. W. }
  - # 3 - 800 ft. W. }
  - # 4 - 400 ft. N. & 160 ft. W. }
  - # 5 - 660 ft. S. & 360 ft. W. }
- all from the SE corner of Sec. 7

**RECEIVED**

MAY 20 2003

WATER RESOURCES DEPT.  
SALEM, OREGON

app # R-85610  
unit # R-13710

**RECEIVED**

OCT 05 2007

WATER RESOURCES DEPT.  
SALEM, OREGON