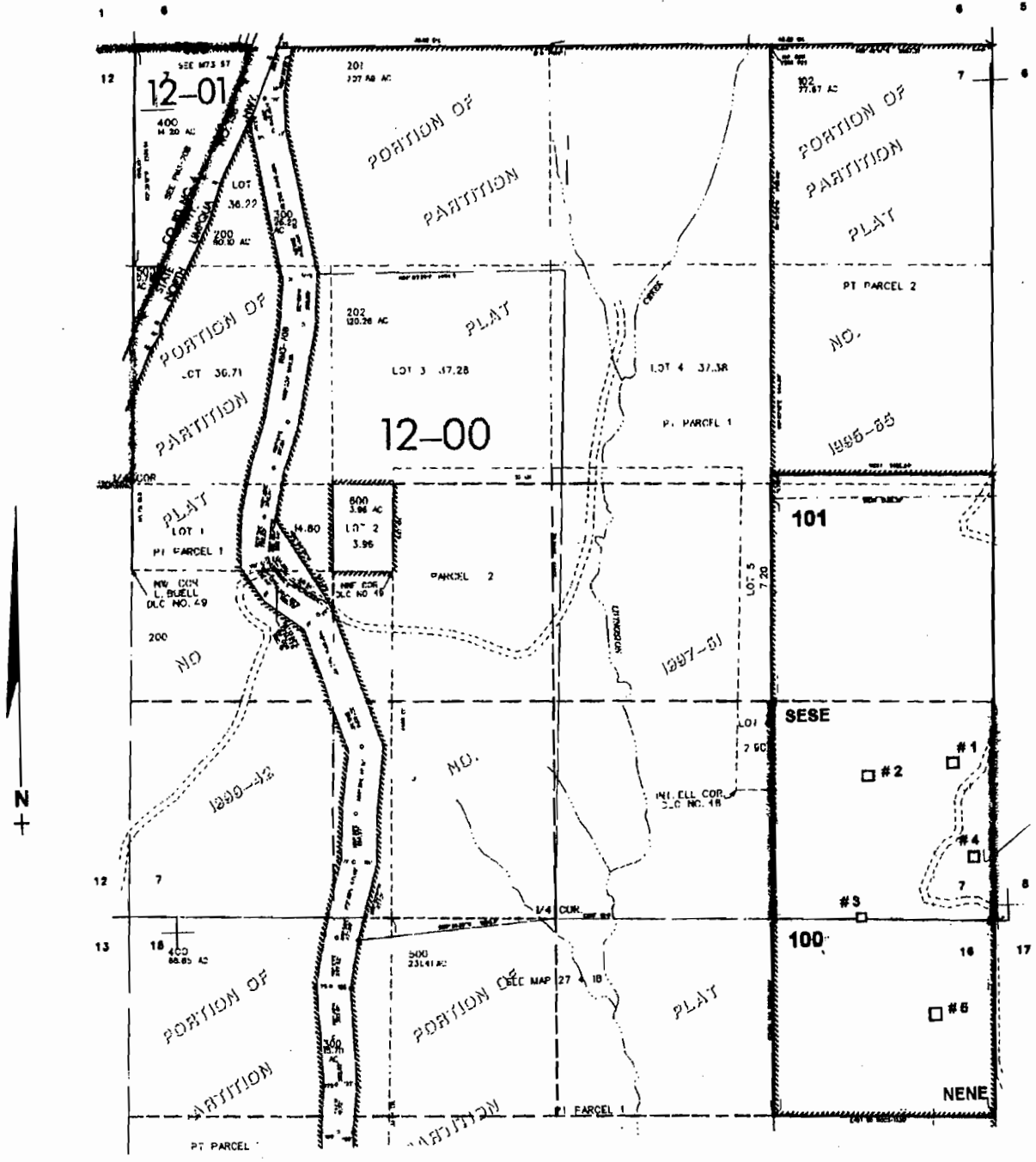


PLAT OF THE CITY OF SALEM
DOUGLAS COUNTY
Scale: 1" = 1000'

#4
 MIKE
 Reservoir



- Pond # 1 - 950 ft. N. & 250 ft. W.)
 # 2 - 950 ft. N. & 760 ft. W.) all from the SE corner of Sec. 7
 # 3 - 800 ft. W.)
 # 4 - 400 ft. N. & 150 ft. W.)
 # 5 - 650 ft. S. & 350 ft. W.)

RECEIVED

MAY 20 2003

WATER RESOURCES DEPT.
 SALEM, OREGON

RECEIVED

JUL 05 2007

WATER RESOURCES DEPT.
 SALEM, OREGON

app # R-85609
 permit # R-13709