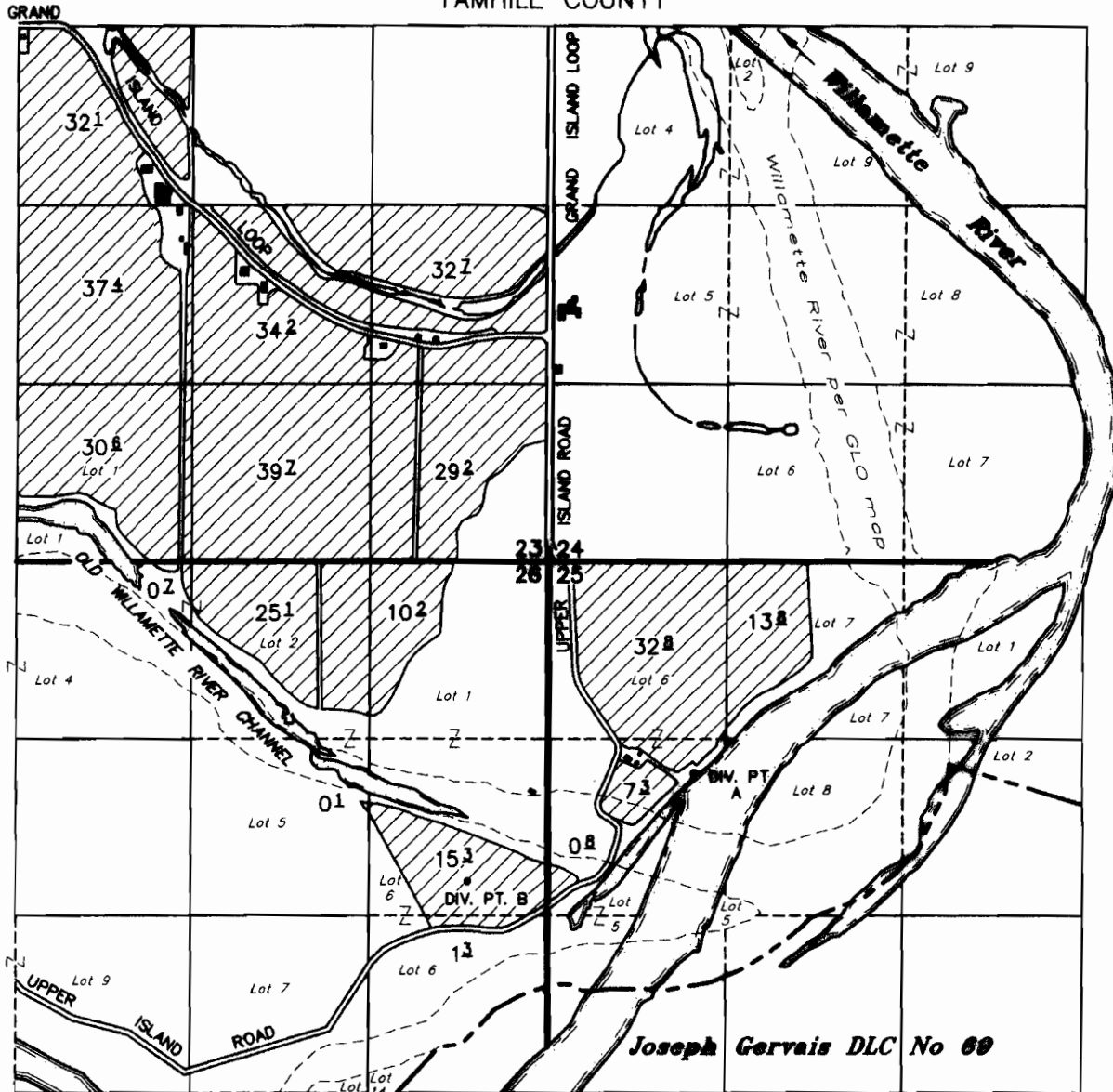


# T.5S. R.3W. W.M.

YAMHILL COUNTY



DIV PT A: 1585' S & 1050' E FROM THE NW COR SEC 25  
 DIV PT B: 2383' S & 585' W FROM THE NE COR SEC 26

## FINAL PROOF SURVEY UNDER

RECEIVED

**TAX LOTS:**

053W23 00600  
 053W23 01100  
 053W23 01200  
 053W23 01300  
 053W25 00100  
 053W26 00100  
 053W26 00200  
 053W26 00800

GR-1540  
 GR-1541  
 GR-1542  
 GR-3155  
 GR-3156  
 GR-3567  
 GR-3568  
 G-1476  
 17944  
 17950  
 30616

G-1354  
 13625  
 13631  
 24121

GR-1483  
 GR-1484  
 GR-1485  
 GR-2961  
 GR-2962  
 GR-3276  
 GR-3277  
 31301  
 13772  
 13774

WATER RESOURCES DEPT  
 SALEM, OREGON

Application No. S-72039 Permit No. 52060 Certificate No. 24565

## A & R SPADA FARMS



NOTE: This map is for the purpose of identifying the location of water rights and has no intent to dimension or locate property ownership lines.

SEPTEMBER 14, 1999  
 rev December 17, 2007  
 SCALE: 1" = 1320'