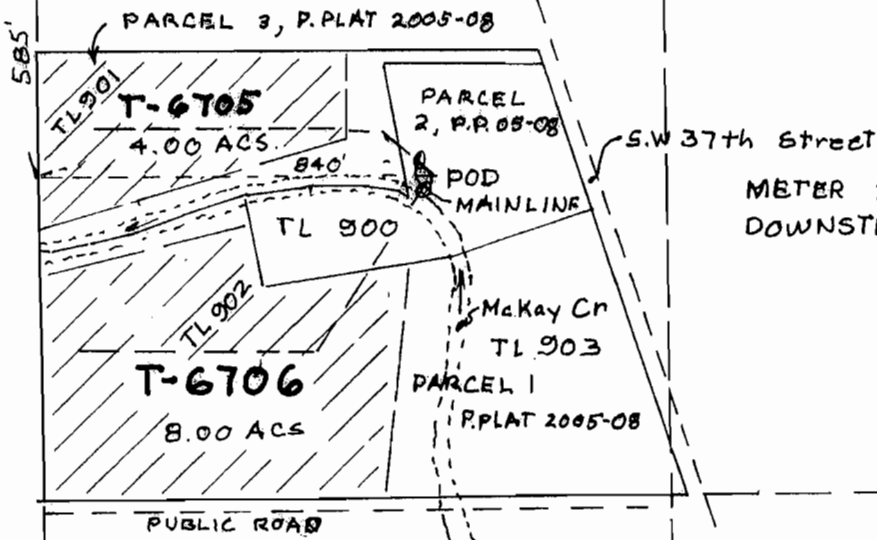


NW CORNER SEC. 16

NW 1/4, NW 1/4

NE 1/4, NW 1/4



SW 1/4, NW 1/4

SE 1/4, NW 1/4

RECEIVED

JUN 05 2008

WATER RESOURCES DEPT  
SALEM, OREGON

THIS MAP IS NOT INTENDED TO PROVIDE  
LEGAL DIMENSIONS OR LOCATIONS OF  
PROPERTY OWNERSHIP LINES

**KALAMBEIN ENGINEERING LTD.**  
ENGINEERS — SURVEYORS — PLANNERS  
281 S.E. Second Pendleton, Oregon

DATE JUN 05 2008	DRN. BY KALAMBEIN	DRN. NO. 07-08A	REVISION 1 07/12
---------------------	----------------------	--------------------	---------------------

FINAL PROOF MAP

T-6705

ANDERSON'S  
NW 1/4, NW 1/4, SECTION 16  
T. 2 N., R. 32 E. W. 1 N.



ORIGINAL APPLICANT:  
PEARSON

RECEIVED

MAY 08 2007

WATER RESOURCES DEPT  
SALEM, OREGON

RENEWS 6/30/09