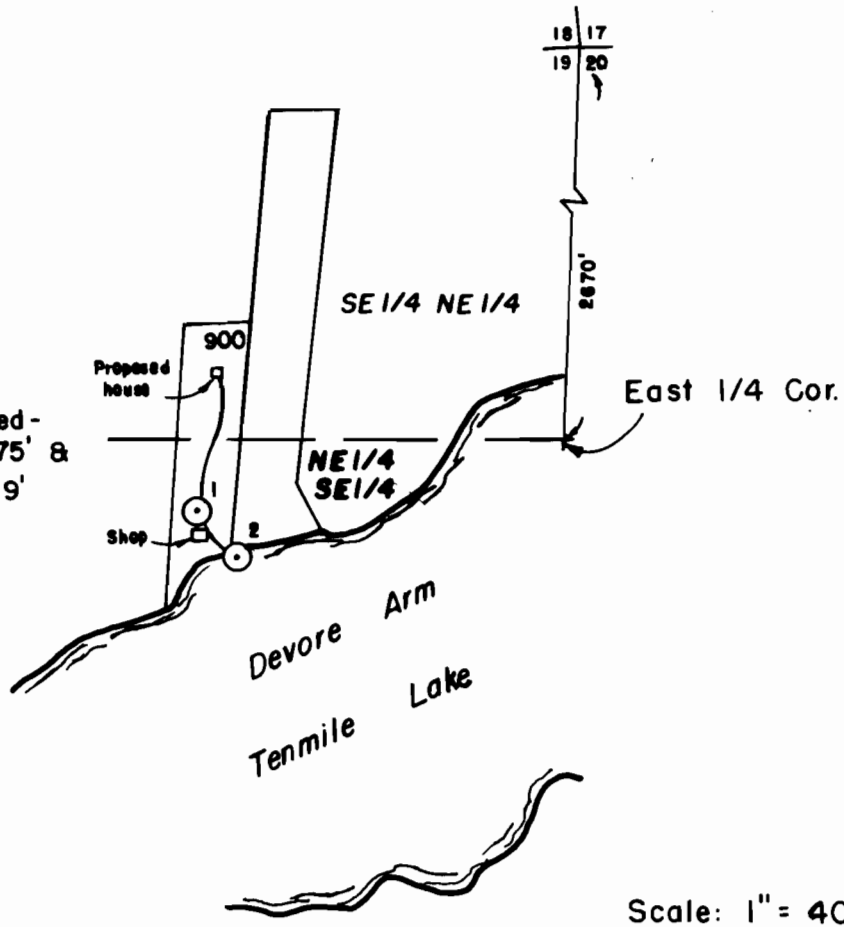


SEC. 19, T 23 S, R 12 W W M

Points of diversion are located -
1. S 79° 28' W a distance of 775' &
2. S 70° 22' W a distance of 719'
both from the E 1/4 corner.



RECEIVED

OCT 01 2002

WATER RESOURCES DEPT.
SALEM, OREGON

**FINAL PROOF SURVEY
UNDER**

Application No. F81561 Permit No. 53318

DON WILLIAMS

Surveyed 9-02-2002 by K. Phelps

