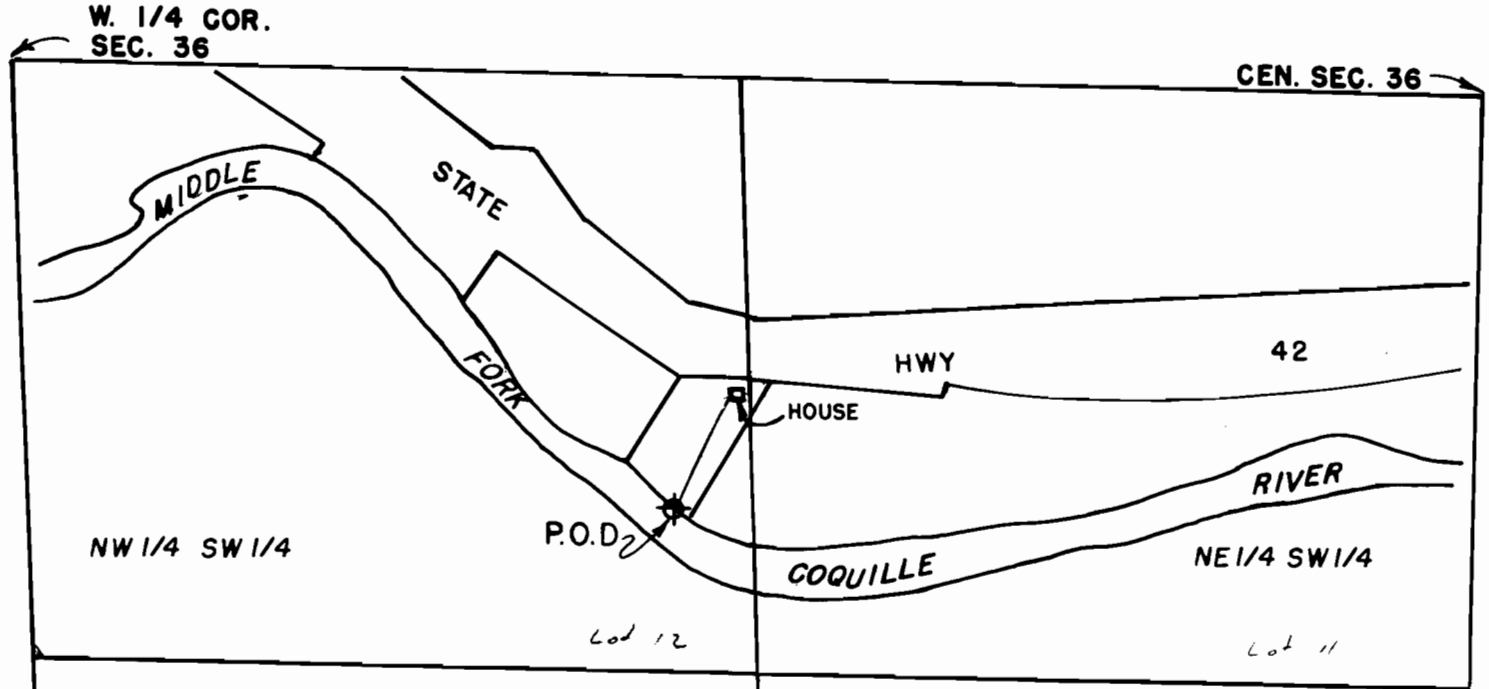


SEC. 36, T 29S, R 11W WM



THE POINT OF DIVERSION IS
S59° 24' E 1670 ft. FROM THE
WEST 1/4 CORNER OF SEC. 36

Scale: 1" = 400'



FINAL PROOF SURVEY UNDER

35 36
2 1

Application No. 71919 Permit No. 52295



RECEIVED

ROBIN EVANS

AUG 22 2000

Surveyed 1-8-2000 by K. Phelps

WATER RESOURCES DEPT.
SALEM, OREGON