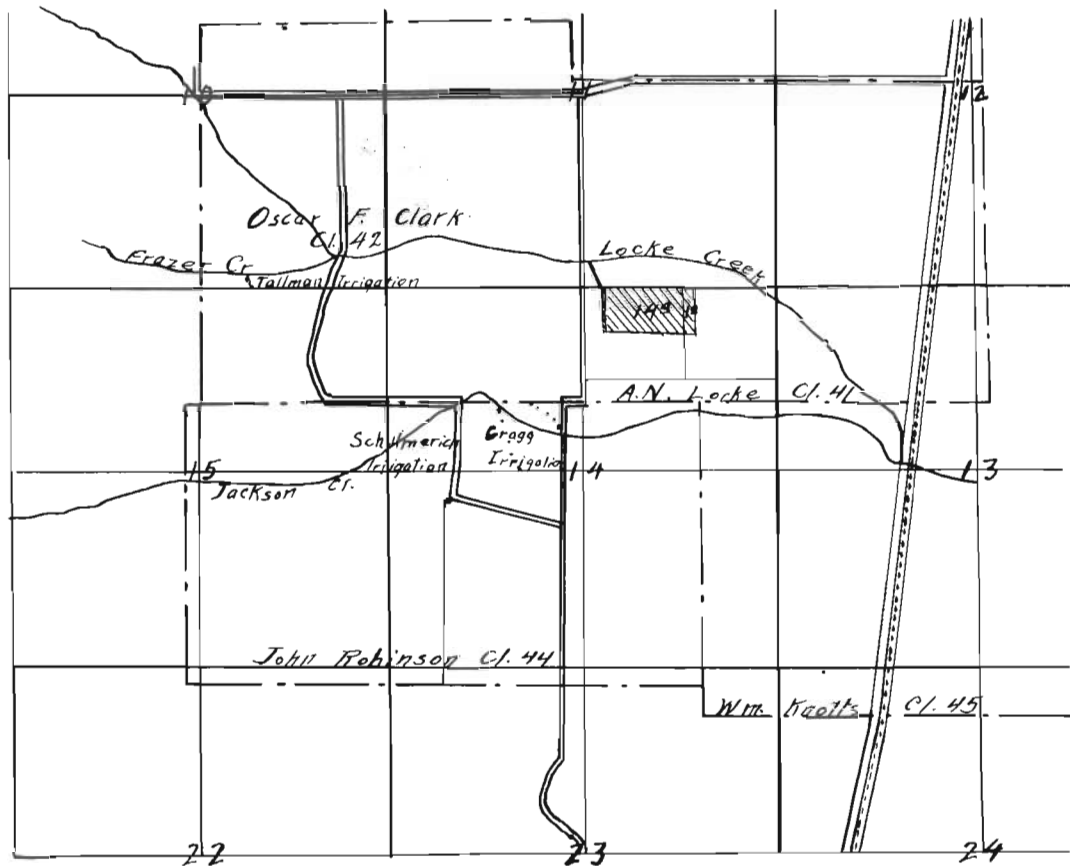


LOCKE IRRIGATION

T. 11 S. R. 5 W. W. M.

Benton County Ore. :

scale 1" = 40 chs.



Certificate

I, W. C. Galloway of Corvallis, Oregon, do hereby certify that this map was made from notes taken under my direction on July 3, 1928, and that it correctly represents the works described in the accompanying application together with the location of streams and other ditches in the immediate vicinity

W. C. Galloway

July 7, 1928.

Application No.

3328

Permit No.

8019