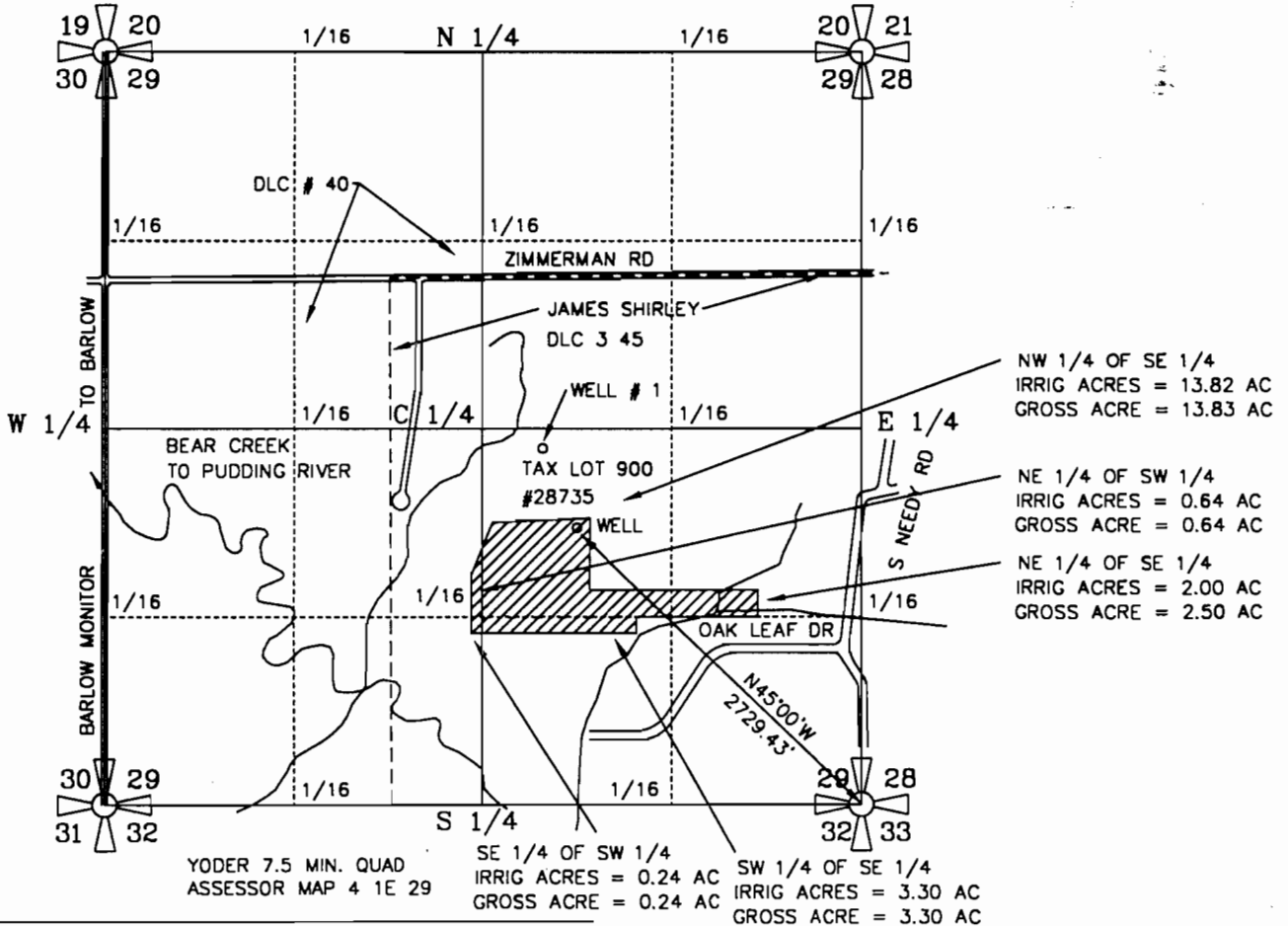


NW 1/4 OF THE SE 1/4 OF SECTION 29
 NE 1/4 OF THE SE 1/4 OF SECTION 29
 SW 1/4 OF THE SE 1/4 OF SECTION 29
 SE 1/4 OF THE SW 1/4 OF SECTION 29
 NE 1/4 OF THE SW 1/4 OF SECTION 29
 T4S, R1E of the WM
 CLACKAMAS COUNTY, OREGON



NW 1/4 OF SE 1/4
 IRRIG ACRES = 13.82 AC
 GROSS ACRE = 13.83 AC

NE 1/4 OF SW 1/4
 IRRIG ACRES = 0.64 AC
 GROSS ACRE = 0.64 AC

NE 1/4 OF SE 1/4
 IRRIG ACRES = 2.00 AC
 GROSS ACRE = 2.50 AC

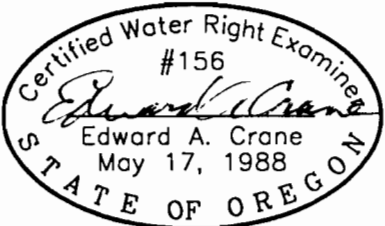
YODER 7.5 MIN. QUAD
 ASSESSOR MAP 4 1E 29

SE 1/4 OF SW 1/4
 IRRIG ACRES = 0.24 AC
 GROSS ACRE = 0.24 AC

SW 1/4 OF SE 1/4
 IRRIG ACRES = 3.30 AC
 GROSS ACRE = 3.30 AC

PREPARATION OF THIS MAP WAS FOR THE PURPOSE OF IDENTIFYING THE LOCATION OF THE WATER RIGHTS ONLY AND HAS NO INTENT TO PROVIDE DIMENSIONS OR LOCATION OF PROPERTY OWNERSHIP LINES.

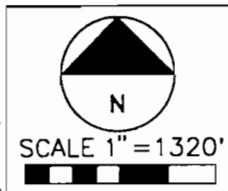
IRRIGATION LOCATION	IRRIGATION AREA:
NE 1/4 OF SW 1/4 OF SECTION 29	0.64 ACRES
SE 1/4 OF SW 1/4 OF SECTION 29	0.24 ACRES
NE 1/4 OF SE 1/4 OF SECTION 29	2.00 ACRES
NW 1/4 OF S3 1/4 OF SECTION 29	13.82 ACRES
SW 1/4 OF SE 1/4 OF SECTION 29	3.30 ACRES
TOTAL ACRES = 20.00 ACRES	



Renewal 12/31/01
 Signed *C. Z. 2000*

SURVEYED MAY 2, 2000
 BY EDWARD A. CRANE, CWRE

K:\CAD\CWRE\121-006\12100601.DWG EAC 5/19/2000



WELL #1 IS LOCATED 1930 FEET NORTH AND 1930 FEET WEST OF THE SOUTHEAST CORNER OF SECTION 29, (LOCATED IN THE JAMES SHIRLEY DLC NO 45) TOWNSHIP 4 SOUTH, RANGE 1 EAST OF WILLAMETTE MERIDIAN, CLACKAMAS COUNTY, OREGON

FINAL PROOF SURVEY
GROUNDWATER PERMIT G-12519

PREPARED BY EDWARD A. CRANE, CWRE

DATE
 MAY 2000

PROJECT NO.
 121-006



CRANE & MERSETH
 Engineering/Surveying
 SUITE "D"
 6566 SE LAKE ROAD
 MILWAUKIE, OREGON 97222
 BUS: (503) 654-2005
 FAX: (503) 654-2575

APPLICATION FOR PERMIT NUMBER G-13885
 PERMIT NUMBER G-12519 IN THE NAME OF:

COLONY NURSERY, INC.
 28889 S NEEDY ROAD, CANBY 97013
 TEL: 503-651-2348; FAX: 503-651-2524

SHEET
 1/1