

THIS MAP WAS PREPARED FOR
ASSESSMENT PURPOSE ONLY

SECTION 10 T.1N. R.10E. W.M. HOOD RIVER COUNTY

1"=400'

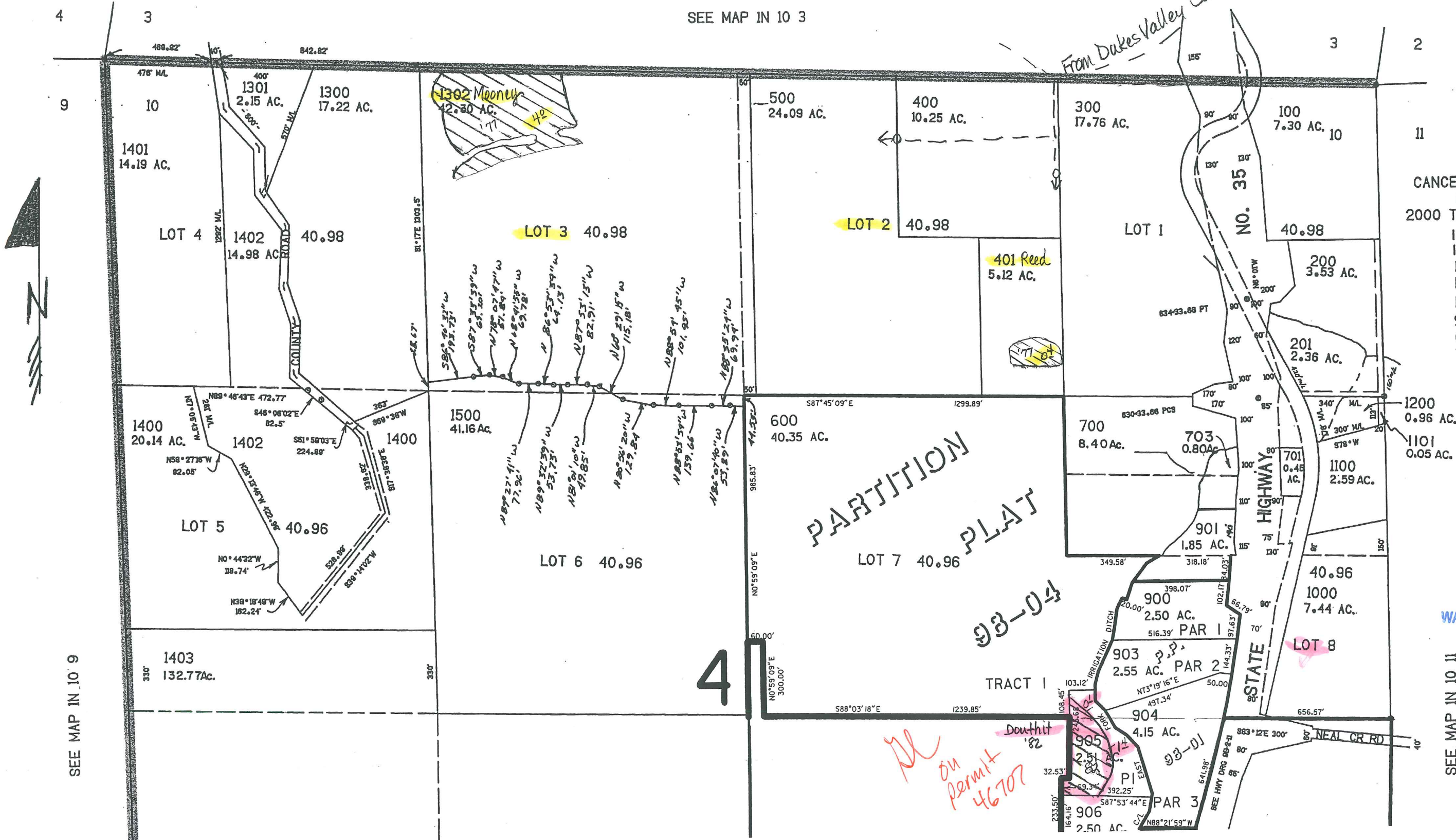
RECEIVED

MAR 17 2005

WATER RESOURCES DEPT
SALEM, OREGON

IN 10 10
& INDEX

SEE MAP IN 10 3



CANCELLED NO'S
800
2000 THRU 3305
1303
1501
1600
1700
1900
902
601
702

RECEIVED

APR 01 2008

WATER RESOURCES DEPT
SALEM, OREGON

SEE MAP IN 10 11

SEE MAP IN 10 9

Handwritten: on permit 46707

Handwritten: Douthit '82

Handwritten: 93-01

Handwritten: 93-04

Handwritten: 93-01

