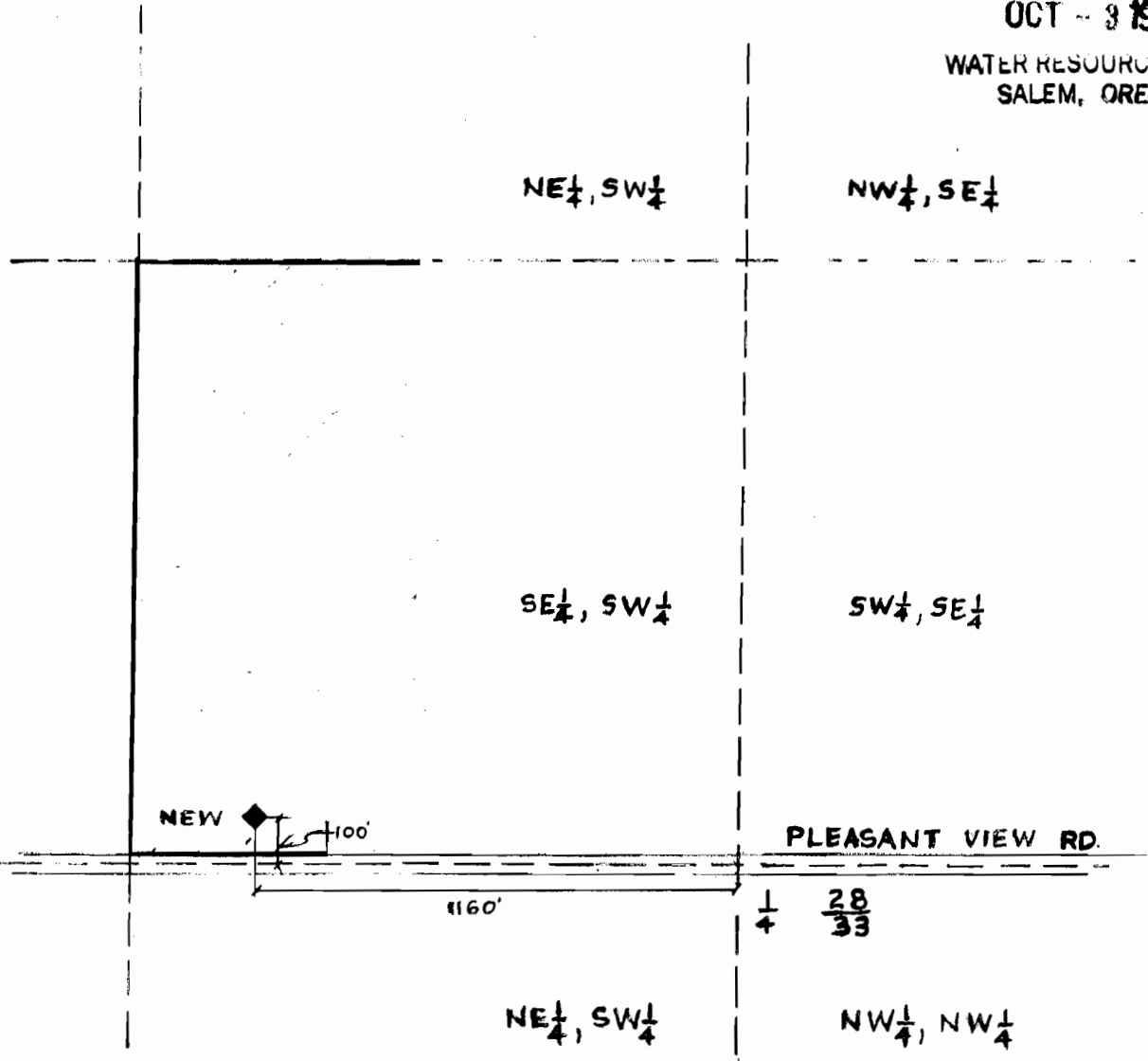


RECEIVED

OCT - 3 1995

WATER RESOURCES DEPT.
SALEM, OREGON



KRUMBEIN ENGINEERING LTD.
ENGINEERS - SURVEYORS - PLANNERS
361 S.E. Second Pendleton, Oregon

Scale
1" = 400'
Date
15 NOV 87

Drn. By
DHK
Ckd. By

Drng. No.
8414A
Job No.
9430

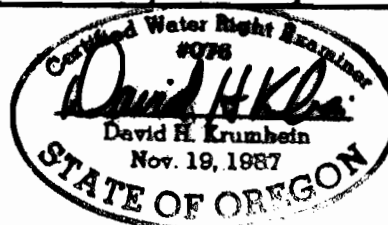
Revision 1
Revision 2

FINAL PROOF SURVEY

PHILLIPS G-11030

SE 1/4, SW 1/4, SECTION 28

T.6 N., R. 35 E. W. M.



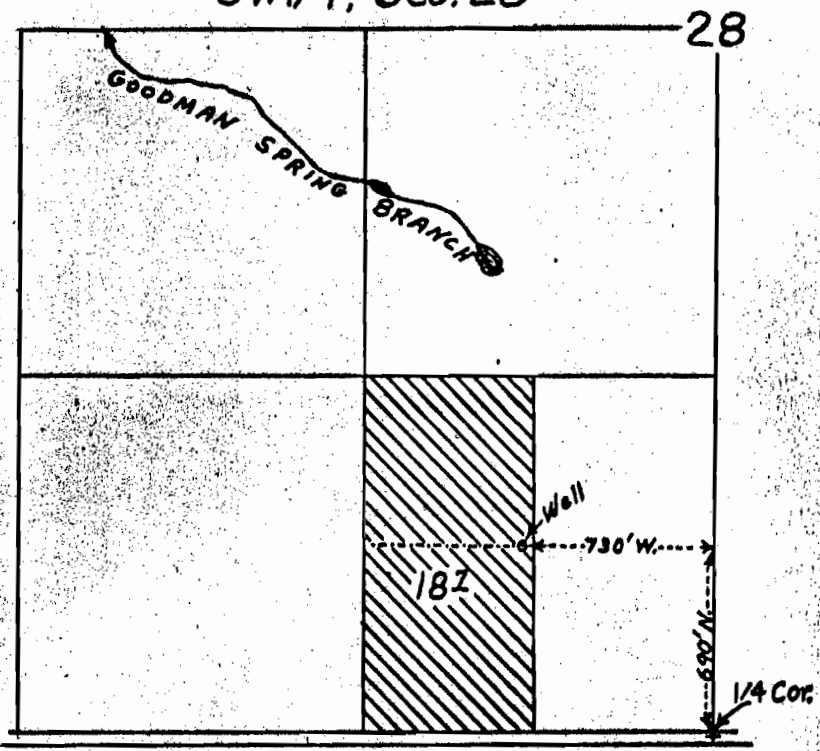
RENEWS 6/30/95

AMENDED 8/27/08 WRD-LH

G-4100
397387

RECEIVED
APR 23 1968
STATE ENGINEER
OREGON

T.6N., R.35E.W.M.
SW1/4, Sec. 28



1" = 660'

MAP TO ACCOMPANY APPLICATION
TO APPROPRIATE WATER
SOURCE - A WELL
MABEL KNOSP

Application No. G-4343
Permit No. G-4100