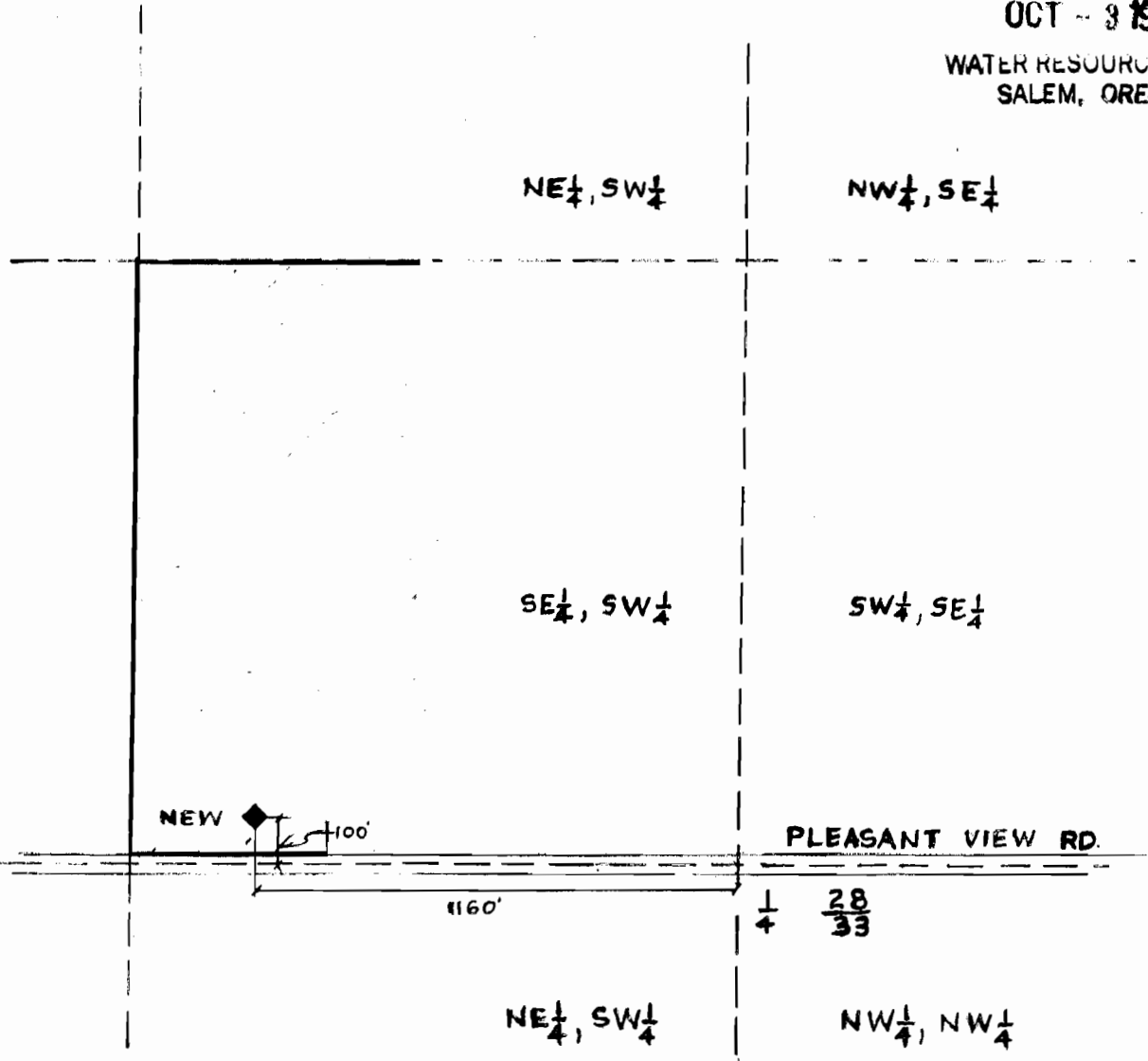


**RECEIVED**

OCT - 3 1995

WATER RESOURCES DEPT.  
SALEM, OREGON



**KRUMBEIN ENGINEERING LTD.**  
ENGINEERS - SURVEYORS - PLANNERS  
361 S.E. Second Pendleton, Oregon

Scale  
1" = 400'  
Date  
15 NOV 87

Drn. By  
DHK  
Ckd. By

Drng. No.  
8414A  
Job No.  
9430

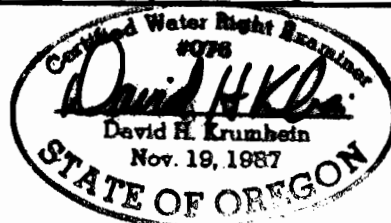
Revision 1  
Revision 2

FINAL PROOF SURVEY

PHILLIPS G-11030

SE 1/4, SW 1/4, SECTION 28

T.6 N., R. 35 E. W. M.



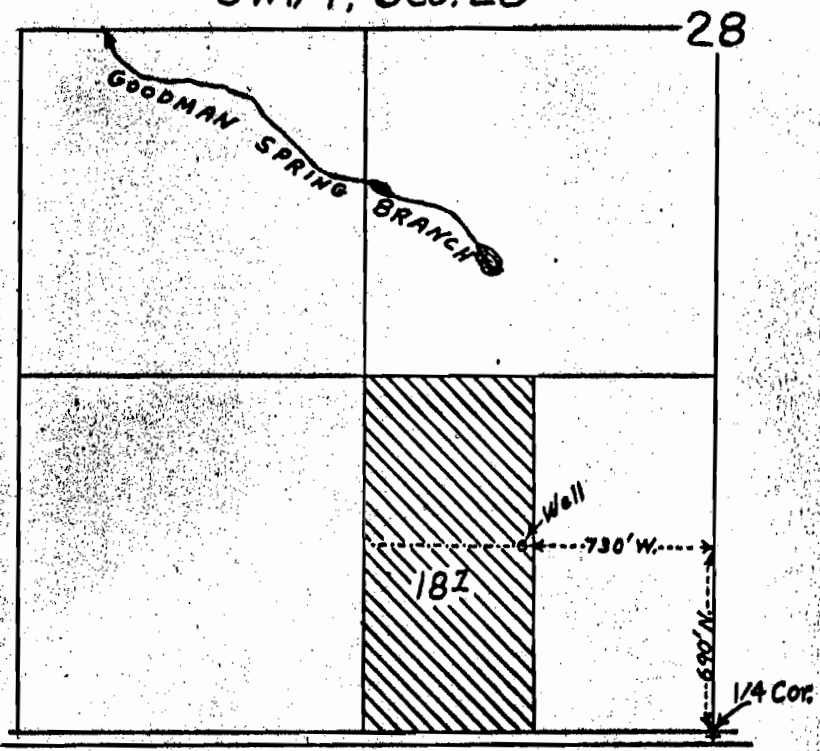
RENEWS 6/30/95

AMENDED 8/27/08 WRD-LH

G-4100  
397387

RECEIVED  
APR 23 1968  
STATE ENGINEER  
OREGON

T.6N., R.35E.W.M.  
SW1/4, Sec. 28



1" = 660'

MAP TO ACCOMPANY APPLICATION  
TO APPROPRIATE WATER  
SOURCE - A WELL  
MABEL KNOSP

Application No. G-4343  
Permit No. G-4100