



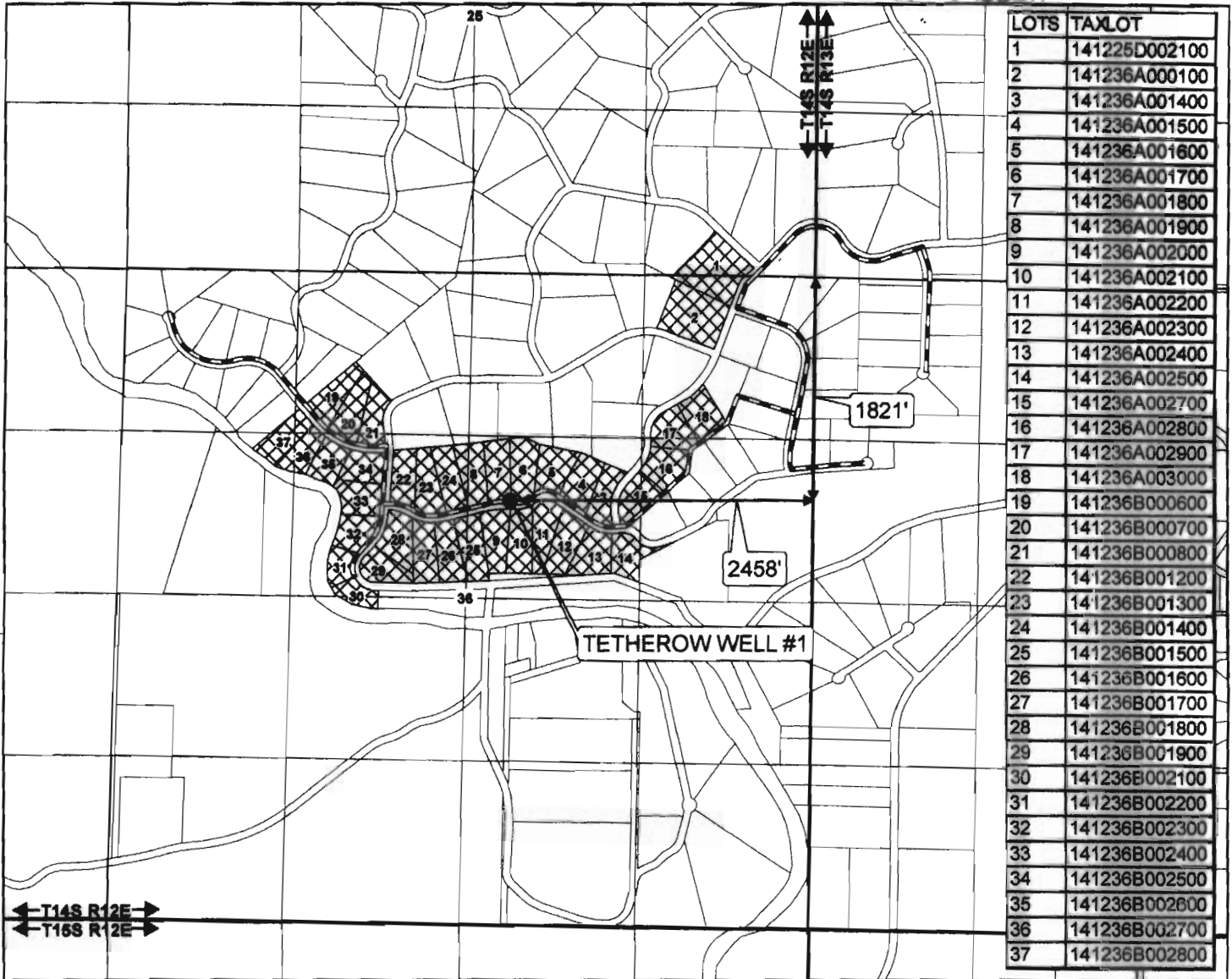
# AVION WATER CO, INC.

CLAIM OF BENEFICIAL USE  
Application G-8754, Permit G-8258  
T14S, R12E, W.M., Sections 25 & 36  
Deschutes County  
Attachment # 1

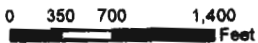
# RECEIVED

1 of 1

MAY 05 2008



1 inch equals 1,320 feet



DRAWN BY: TANNER LEMMON  
AVION WATER GIS DEPARTMENT  
NOVEMBER, 2007

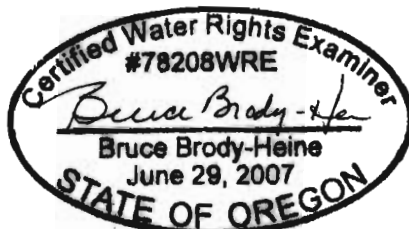
### DISCLAIMER:

This map was prepared for the purpose of identifying the location of water rights only and is not intended to provide legal dimensions or locations of property ownership lines.

- POINT OF APPROPRIATION
- 4" MAINLINE
- ▣ LOTS - 89 Acres

## WELL DESCRIPTION

TETHEROW WELL #1 -  
SW 1/4, NE 1/4 of  
Section 36, T 14 S, R 12 E,  
WM - 1821' South and 2458'  
West from the NE corner of  
Section 36  
Taxlot - 141236A001800



EXPIRES: 12/31/09

## NOTES:

Meter is inside well house,  
and downstream, within 10 ft.  
of well head.

Base Layer:  
Deschutes County Taxlot Shapefile  
Projected Coordinate System :  
NAD 1983 StatePlane Oregon South  
Geographic Coordinate System :  
GCS North American 1983