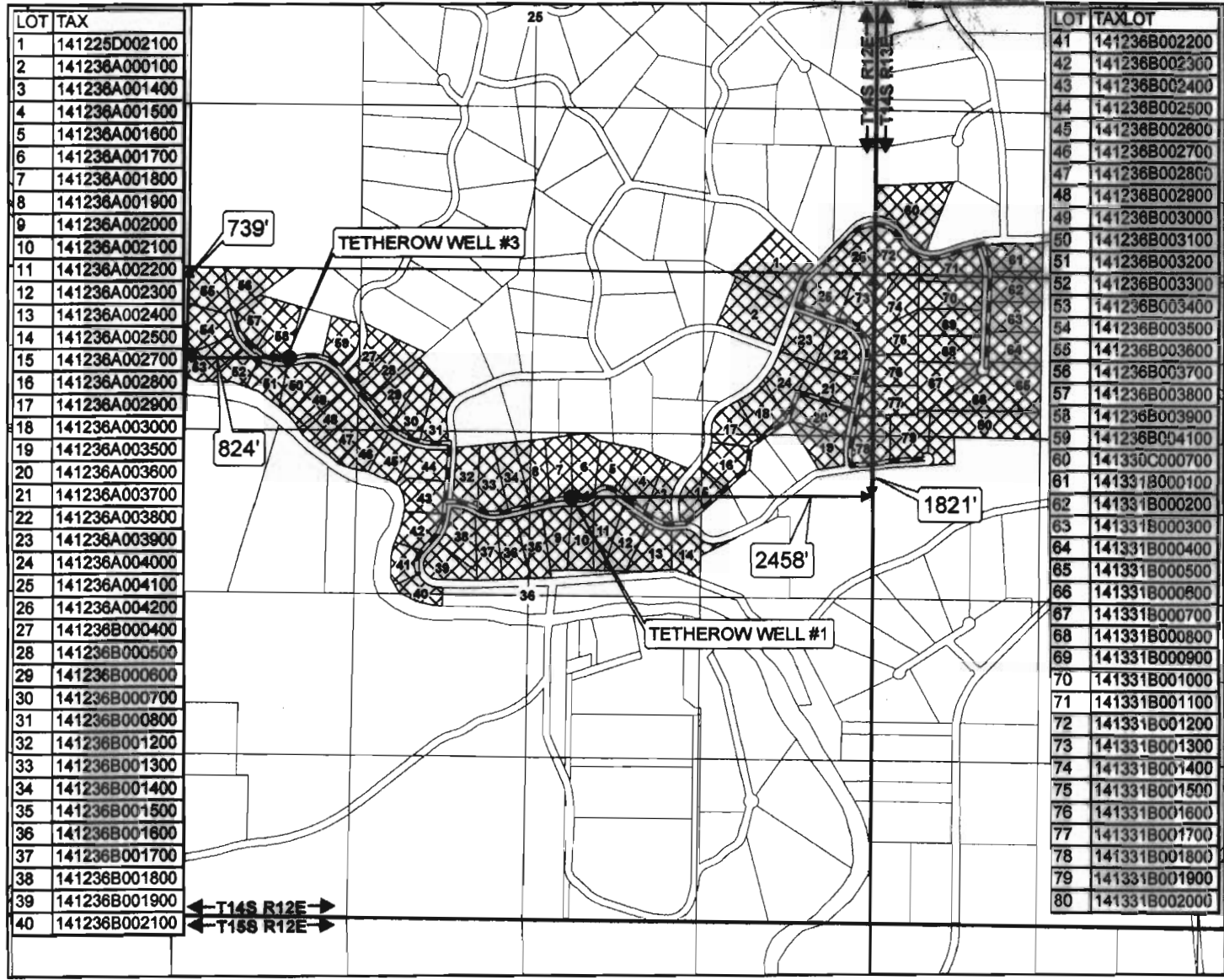


RECEIVED

AVION WATER CO, INC.

CLAIM OF BENEFICIAL USE
Application G-10371, Permit G-9999
T14S, R12E, W.M., Sections 25 & 36
T14S, R13E, W.M., Sections 30 & 31
Deschutes County
Attachment # 1

MAY 05 2007
WATER RESOURCES DEPARTMENT
BUREAU OF WATER



1 inch equals 1,320 feet
0 325 650 1,300 Feet

DRAWN BY: TANNER LEMMON
AVION WATER GIS DEPARTMENT
NOVEMBER, 2007

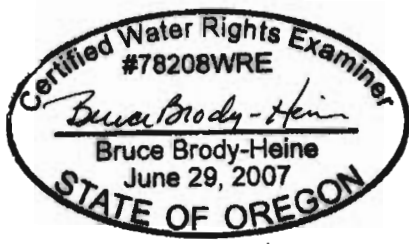
DISCLAIMER:
This map was prepared for the purpose
of identifying the location of water rights
only and is not intended to provide legal
dimensions or locations of property
ownership lines.

- POINTS OF APPROPRIATION
4" MAINLINE
LOTS - 201 Acres

WELL DESCRIPTION

TETHEROW WELL #1 -
SW 1/4, NE 1/4 of
Section 36, T 14 S, R 12 E,
WM - 1821' South and 2458'
West from the NE corner of
Section 36
Taxlot - 141236A001800

TETHEROW WELL #3 -
NW 1/4, NW 1/4 of
Section 36, T 14 S, R 12 E,
WM - 739' South and 824'
East from the NW corner of
Section 36
Taxlot - 141236B003900



EXPIRES: 12/31/09

NOTES:

Meter is inside well house,
and downstream, within 10 ft.
of well head.

Base Layer:
Deschutes County Taxlot Shapefile
Projected Coordinate System :
NAD 1983 StatePlane Oregon South
Geographic Coordinate System :
GCS North American 1983