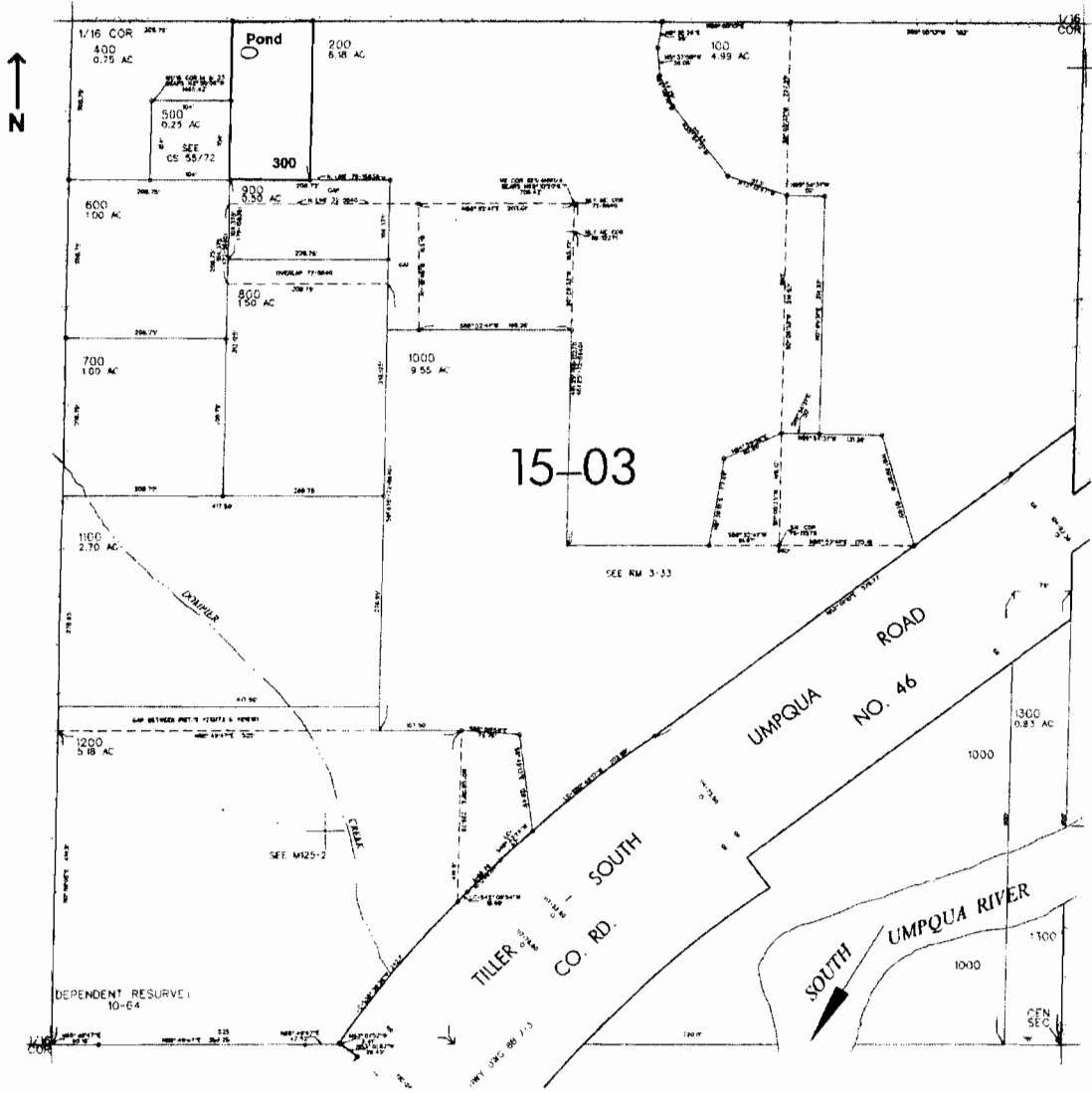


R86872

SE1/4 NW1/4 SEC. 23 T.30S. R. 2W W.M.  
DOUGLAS COUNTY  
Scale: 1" = 250'



Pond is located 40 ft. S. and 230 ft. E. from the NW corner of the SENW of Sec. 23

RECEIVED  
SEP 09 2008  
WATER RESOURCES DEPT  
SALEM, OREGON

RECEIVED  
MAY 23 2007  
WATER RESOURCES DEPT  
SALEM, OREGON

App No R 86872 Permit No R 14507