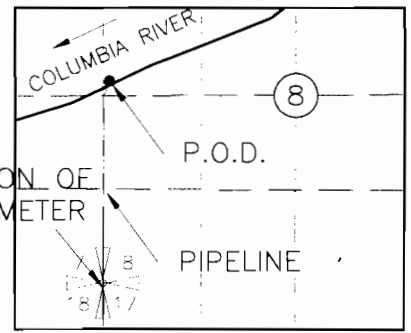
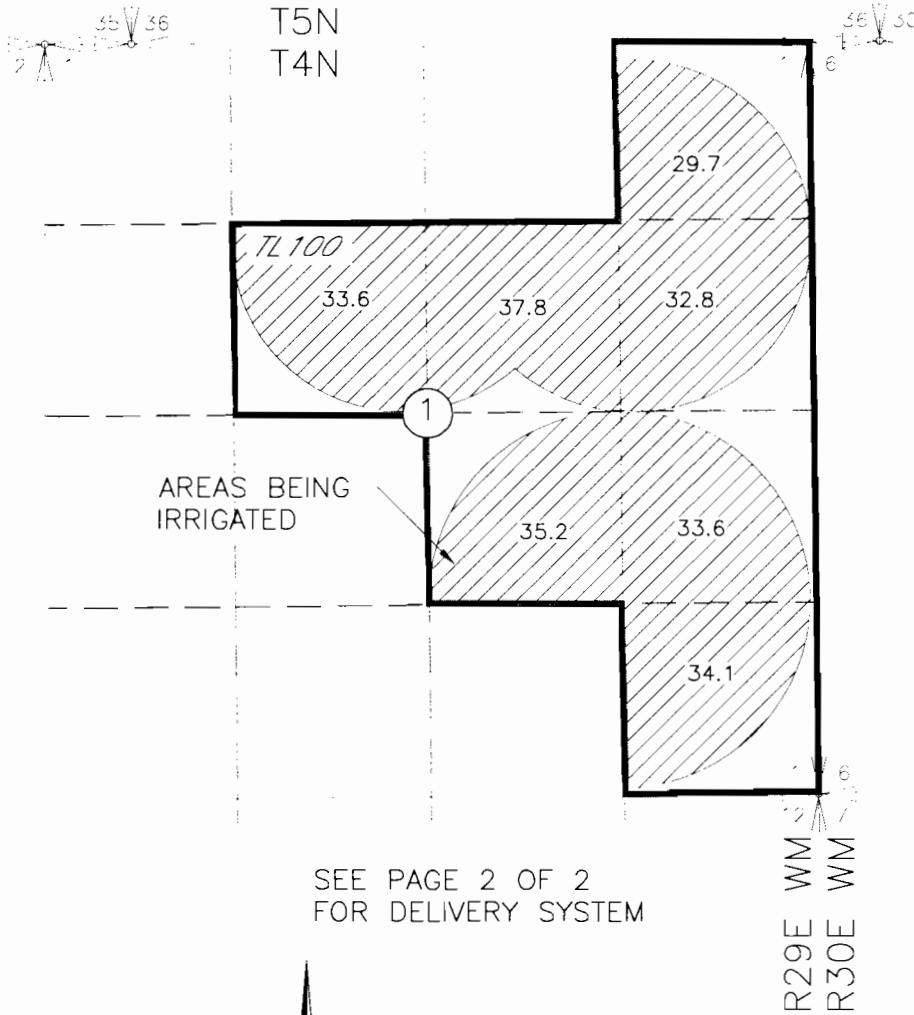


CLAIM OF BENEFICIAL USE MAP
 PAGE 1 OF 2
 FOR TRANSFER T-9708 IN THE NAME OF
 ROYALE COLUMBIA FARMS, INC
 UMATILLA COUNTY
 SECTION 1, T4N, R29E, W.M.



P.O.D. LOCATED 2860'N AND 70'E FROM THE SW CORNER OF SEC 8, T5N, R30E WM

FLOW METER LOCATED AT
 LAT: 45°55'16.8" N
 LON: 119°05'58.5" W

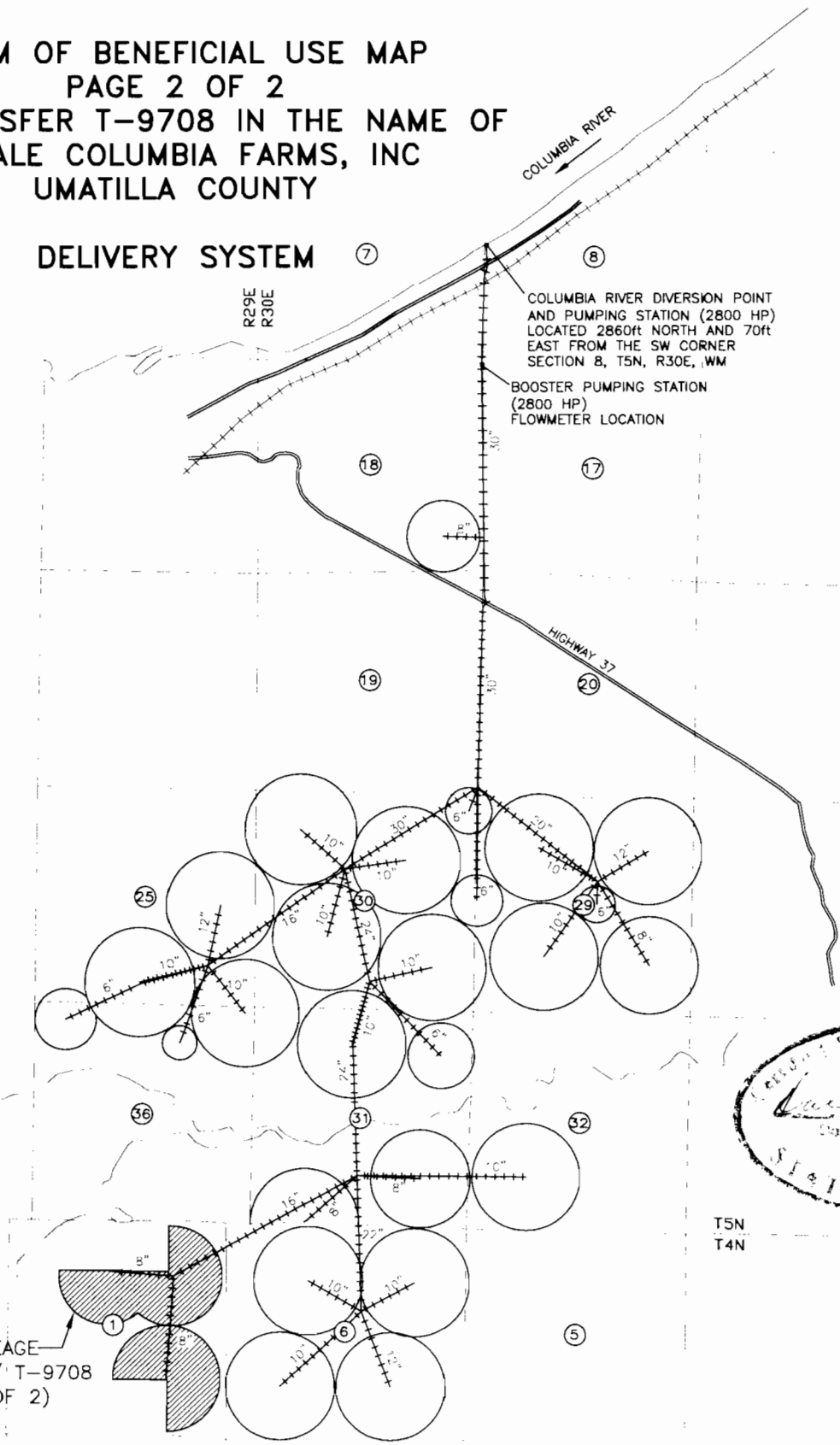
SEE PAGE 2 OF 2
 FOR DELIVERY SYSTEM

NOTE:
 THE PURPOSE OF THIS MAP IS TO IDENTIFY THE APPROXIMATE LOCATION OF THE WATER RIGHT. IT IS NOT INTENDED TO PROVIDE INFORMATION RELATIVE TO THE LOCATION OF PROPERTY OWNERSHIP BOUNDARY LINES.

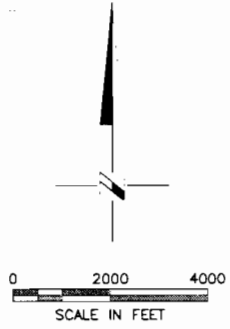
DRAWING: 15\30 08 016 Royale Water Rights Consulting, 800 Main Highway, 3000\ROY - CORRUM\3A\CORRUM.MXD 9/08.dwg
 PLOT: 15\30 08 016 on 04/11/08 10:03 AM

CLAIM OF BENEFICIAL USE MAP
 PAGE 2 OF 2
 FOR TRANSFER T-9708 IN THE NAME OF
 ROYALE COLUMBIA FARMS, INC
 UMATILLA COUNTY

DELIVERY SYSTEM



T5N
T4N



IRRIGATED ACREAGE
 ASSOCIATED W/ T-9708
 (SEE PAGE 1 OF 2)

NOTE:
 THE PURPOSE OF THIS MAP IS TO IDENTIFY THE APPROXIMATE LOCATION OF THE WATER
 RIGHT. IT IS NOT INTENDED TO PROVIDE INFORMATION RELATIVE TO THE LOCATION OF
 PROPERTY OWNERSHIP BOUNDARY LINES.

THE PIPE DISTRIBUTION SYSTEM'S BURIED PIPE LOCATIONS AND SIZES ARE
 APPROXIMATE. THEY ARE BASED ON FARM MAPS, FIELD OBSERVATIONS AND DESCRIPTIONS
 PROVIDED BY OPERATIONS PERSONNEL.

DRAWING: 15\30 08 016 - Perley Water Rights Consulting\30 Vice Engineering\30\ROY - CO COLUMBIA\ROY - CO - 31\W RY.dwg
 PRINTED BY: rwh on 04/16/08 02:31 PM