

T. 7S., R. 2W., W. M.



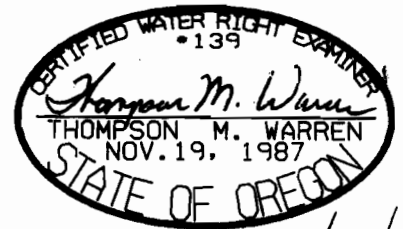
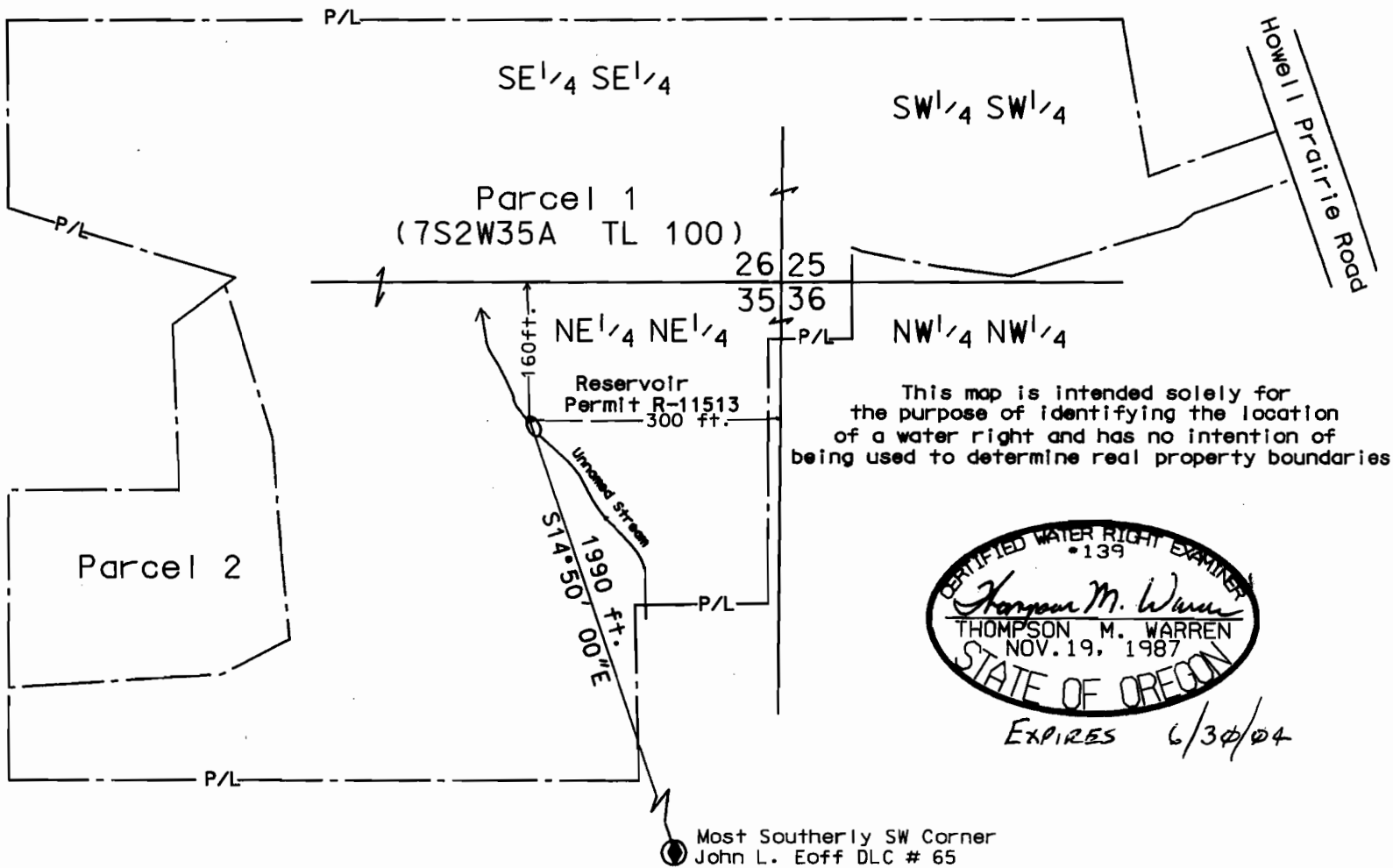
Scale

1" = 200'

Section 35	NE <sup>1</sup> / <sub>4</sub>	NE <sup>1</sup> / <sub>4</sub>
Section 36	NW <sup>1</sup> / <sub>4</sub>	NW <sup>1</sup> / <sub>4</sub>
Section 25	SW <sup>1</sup> / <sub>4</sub>	SW <sup>1</sup> / <sub>4</sub>
Section 26	SE <sup>1</sup> / <sub>4</sub>	SE <sup>1</sup> / <sub>4</sub>

all as projected in John L. Eoff DLC 65  
Marion County

### Partition Plat 2002-82



EXPIRES 6/30/04

## FINAL PROOF SURVEY MAP

FOR

Appication R-72473 Permit R-11513

in name of

MASATOSHI & SUSAN YAMANAKA

Surveyed April 13, 2004

by

Thompson M. Warren CWRE # 139