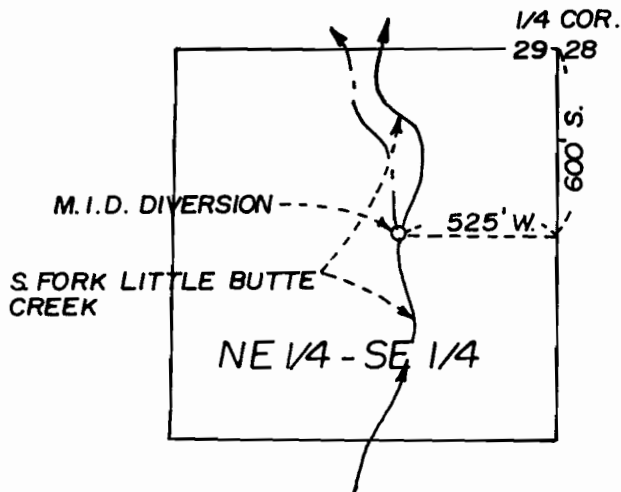


T. 36S., R. 2E., W. M.
DIVERSION POINT

RECEIVED

JUL 1 2000

WATER RESOURCES DEPT.
SALEM, OREGON



FINAL PROOF MAP

PERMIT NO. R11842/52414

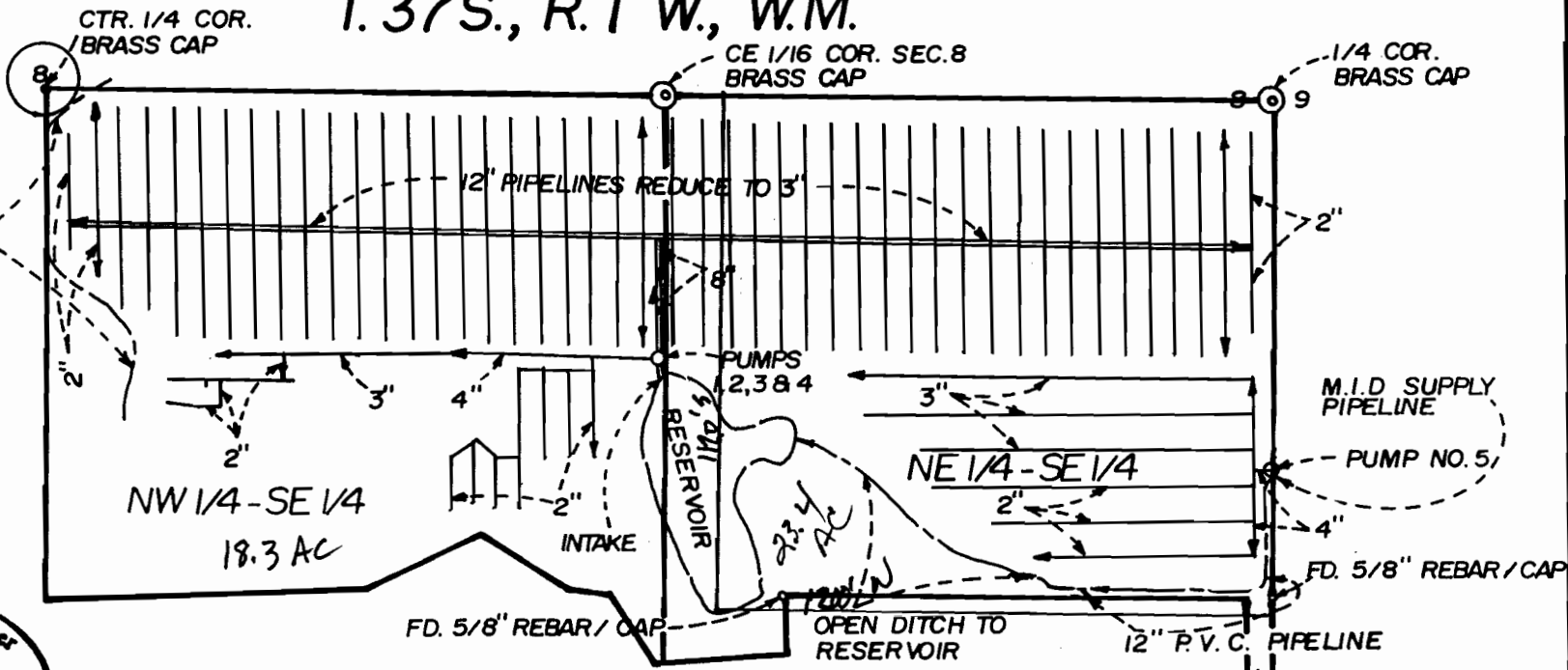
IN NAME OF
DONALD G. ROOT CREDIT
SHELTER TRUST

T. 37S., R. 1 W., W.M.

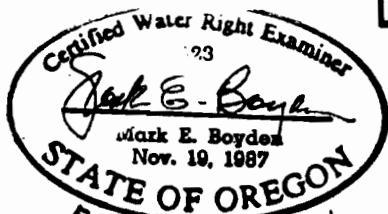
SCALE: 1" = 400'

C. R.R.V.I.D.
CANAL

PURPOSE OF USE: AIR
TEMPERATURE CONTROL
FOR FROST PROTECTION



NOTE: THIS MAP HAS BEEN PREPARED FOR WATER RIGHT PURPOSES ONLY,
NOT FOR PROPERTY BOUNDARY LOCATIONS.



MAP PREPARED MARCH 29, 2000 BY MARK E. BOYDEN

MAP AMENDED BY WRO Staff, 8-25-08 JWS