

T. 36S., R. 2E., W. M.  
DIVERSION POINT

RECEIVED

JUN 26 2000

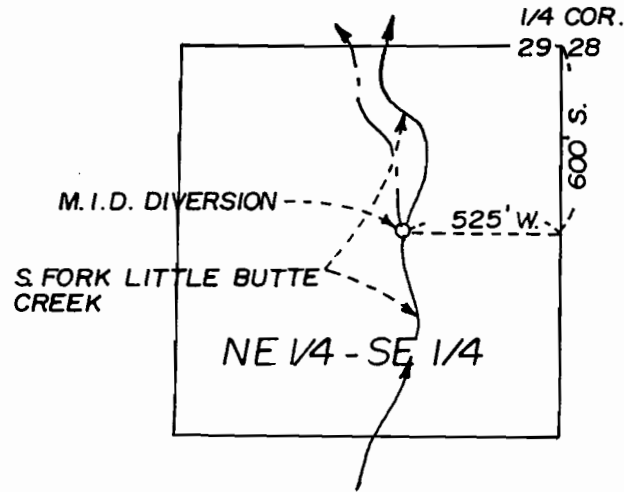
WATER RESOURCES DEPT.  
SALEM, OREGON

FINAL PROOF MAP

PERMIT NO. R11842/52414

IN NAME OF

DONALD G. ROOT CREDIT  
SHELTER TRUST



T. 37S., R. 1 W., W.M.

CTR. 1/4 COR.  
BRASS CAP

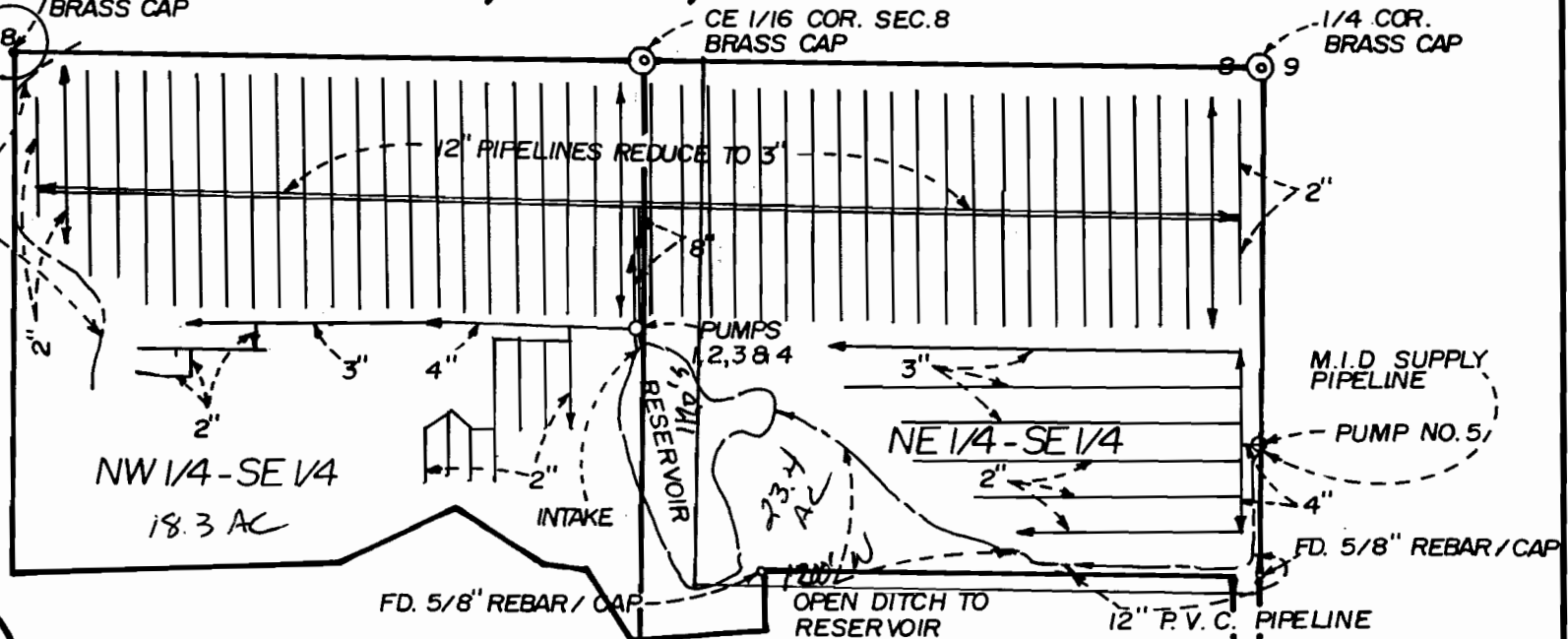
CE 1/16 COR. SEC. 8  
BRASS CAP

1/4 COR.  
BRASS CAP

SCALE: 1" = 400'

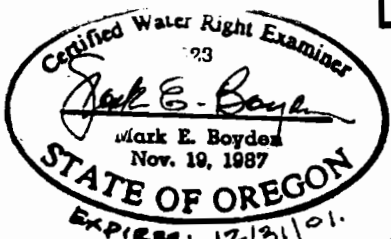
C. R.R.V.I.D.  
CANAL

PURPOSE OF USE: AIR  
TEMPERATURE CONTROL  
FOR FROST PROTECTION



NOTE: THIS MAP HAS BEEN PREPARED FOR WATER RIGHT PURPOSES ONLY,  
NOT FOR PROPERTY BOUNDARY LOCATIONS.

McLAUGHLIN DRIVE



MAP AMENDED BY WRD Staff, 8-25-08 JWS

MAP PREPARED MARCH 29, 2000 BY MARK E. BOYDEN