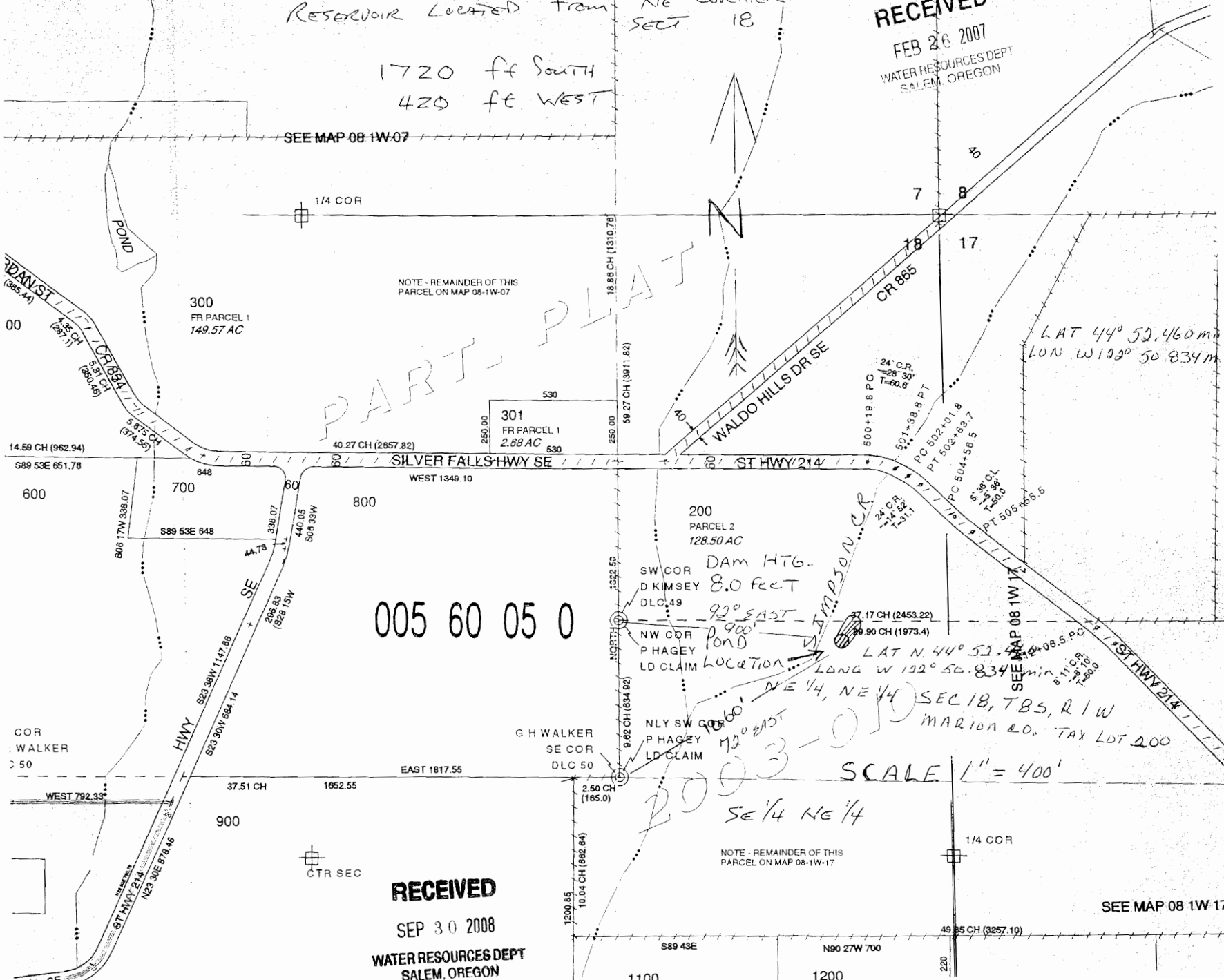


SEC. 18 T8S R1W WM, MARION COUNTY

8 1 W 1 E

Reservoir Located from NE CORNER
SECT 18
1720 ft SOUTH
420 ft WEST

RECEIVED
FEB 26 2007
WATER RESOURCES DEPT
SALEM, OREGON



PART-PLAT

005 60 05 0

DAM HTG.
8.0 FEET

92° EAST
900'

172° EAST
900'

LAT N 44° 52' 46.0 min
LONG W 122° 50' 8.34 min
SEC 18, T8S, R1W
MARION CO. TAX LOT 200

SCALE 1" = 400'

RECEIVED
SEP 30 2008
WATER RESOURCES DEPT
SALEM, OREGON

SEE MAP 08 1W 17