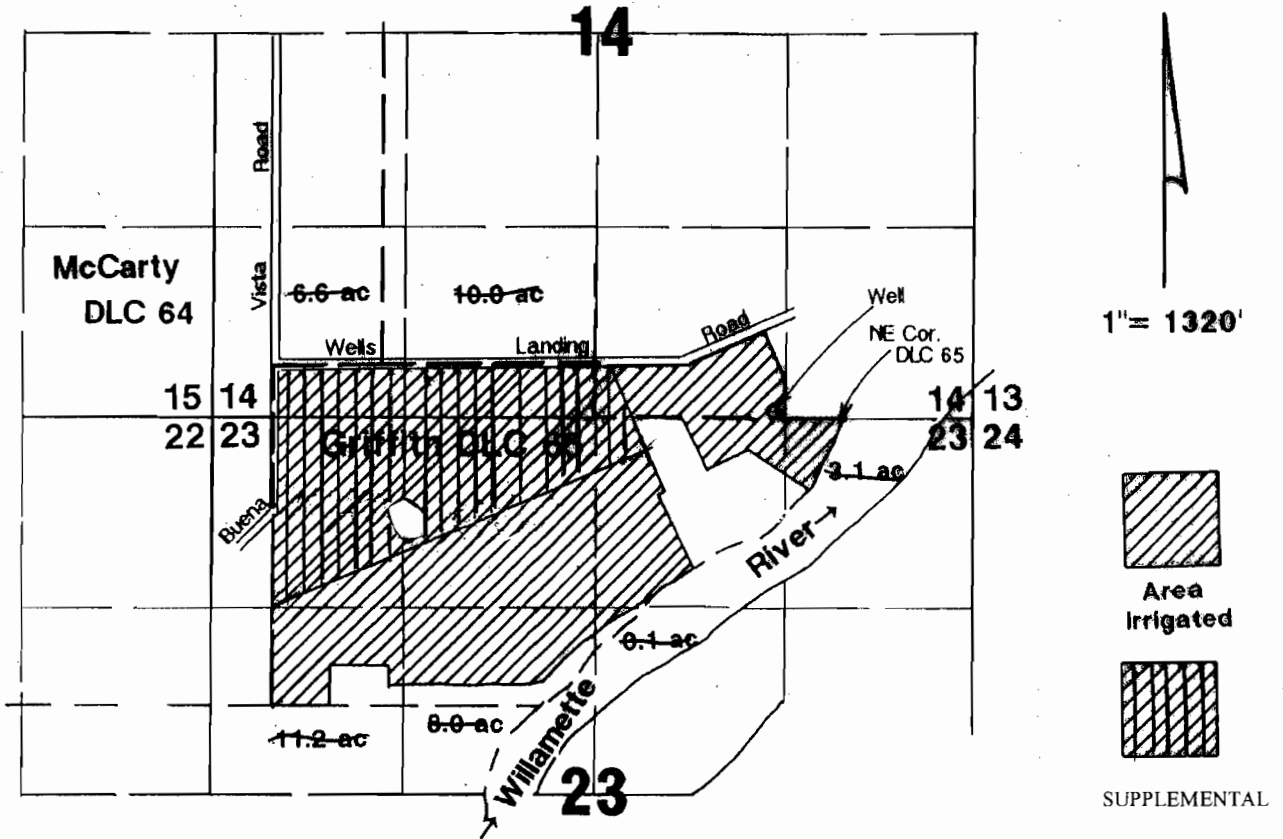


T.9S., R.4W., W.M.



Well located 50'N & 480'W from NE corner DLC 65.

RECEIVED

SEP 13 1996

WATER RESOURCES DEPT.
Salem, OREGON

ACREAGE PER QUARTER-QUARTER
 SW SW - 6.6 AC SUPPLEMENTAL
 SE SW - 10.0 AC SUPPLEMENTAL
 SW SE - 1.5 AC SUPPLEMENTAL
 SW SE - 10.1 AC PRIMARY
 SEC 14

Final Proof Survey

Application #: G-12063 Permit #: G-11373

In Name Of

Nina Wells

Surveyed on September 6, 1996 by JM Schuette

NE NE - 3.1 AC PRIMARY
 NW NE - 17.5 AC PRIMARY
 NW NE - 1.7 AC SUPPLEMENTAL
 SW NE - 0.1 AC PRIMARY
 NE NW - 20.4 AC PRIMARY
 NE NW - 18.3 AC SUPPLEMENTAL
 NW NW - 4.3 AC PRIMARY
 NW NW - 21.9 AC SUPPLEMENTAL
 SW NW - 11.2 AC PRIMARY
 SE NW - 8.0 AC PRIMARY
 SEC 23

MAP AMENDED BY WRD STAFF, 10/15/2008
 TO REFLECT PRIMARY AND SUPPLEMENTAL

THIS MAP WAS PREPARED FOR THE PURPOSE OF IDENTIFYING THE LOCATION OF A WATER RIGHT ONLY AND IS NOT INTENDED TO PROVIDE LEGAL DIMENSIONS OR LOCATION OF PROPERTY OWNERSHIP LINES.

