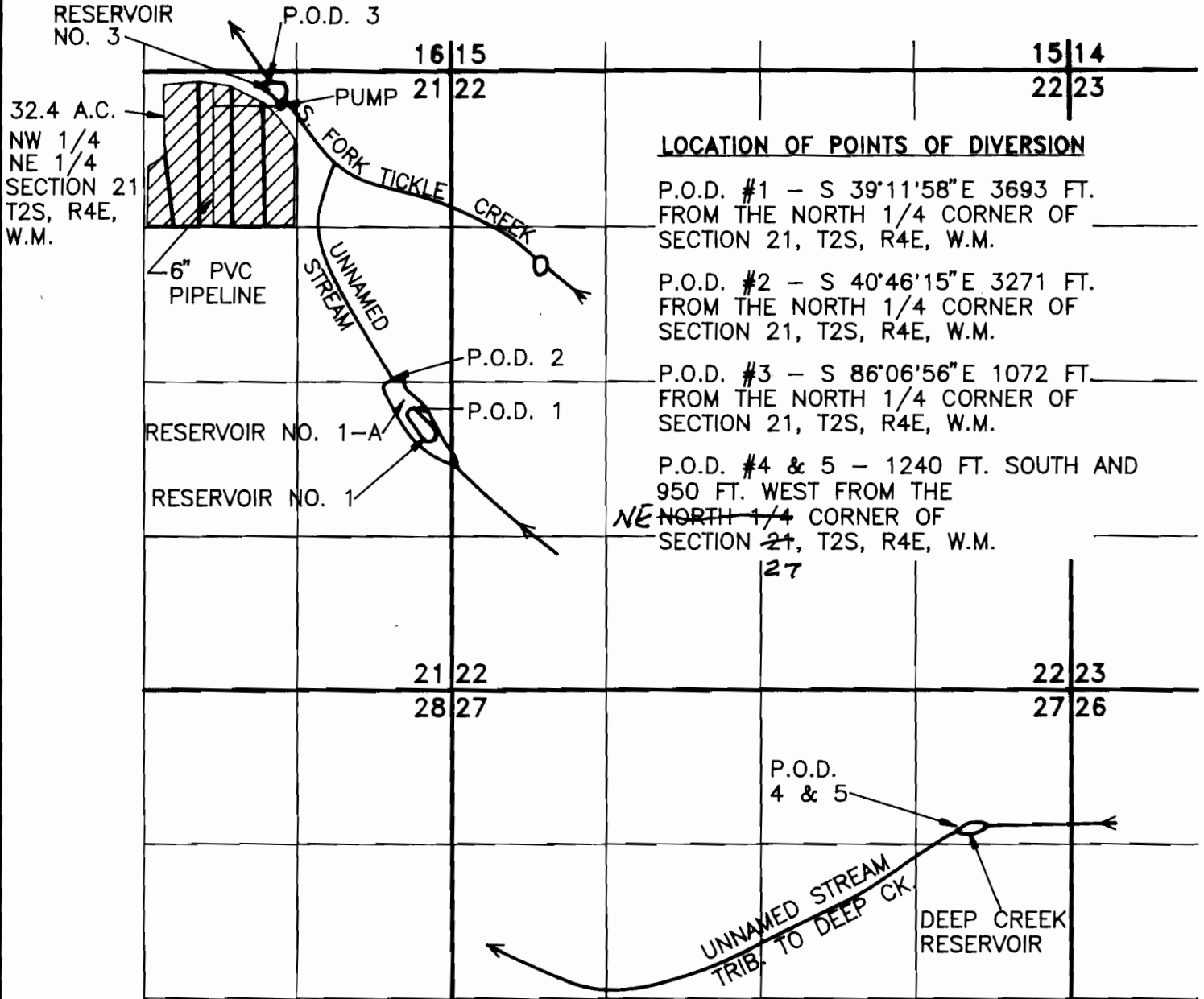


# T2S., R4E., W.M.



### LOCATION OF POINTS OF DIVERSION

- P.O.D. #1 - S 39°11'58"E 3693 FT. FROM THE NORTH 1/4 CORNER OF SECTION 21, T2S, R4E, W.M.
- P.O.D. #2 - S 40°46'15"E 3271 FT. FROM THE NORTH 1/4 CORNER OF SECTION 21, T2S, R4E, W.M.
- P.O.D. #3 - S 86°06'56"E 1072 FT. FROM THE NORTH 1/4 CORNER OF SECTION 21, T2S, R4E, W.M.
- P.O.D. #4 & 5 - 1240 FT. SOUTH AND 950 FT. WEST FROM THE NE NORTH 1/4 CORNER OF SECTION 21, T2S, R4E, W.M.

## FINAL PROOF SURVEY

UNDER

Application No. 70777 Permit No. 51726

IN NAME OF  
SANDY FARMS INC.

**RECEIVED**

DEC 24 1996

Surveyed DECEMBER 17, 1996, by ANDREW M. KLEIN WATER RESOURCES DEPT. SALEM, OREGON



Map amended by WRD staff 10-20-08 TWS



SCALE: 1" = 1320'

EXPIRES 06/30/97

THIS MAP IS FOR THE PURPOSE OF IDENTIFYING THE LOCATION OF THE WATER RIGHT ONLY AND IS NOT INTENDED TO PROVIDE LEGAL DIMENSIONS OR THE LOCATION OF PROPERTY OWNERSHIP LINES.