

T.6S., R.2 & 3W., W.M.

Final Proof Survey

Application #G-11938 Permit #G-11201

In Name Of

Schreiners Gardens

Surveyed on September 28, 1994 by JM Schuette

1" = 1320'

Area Irrigated



Well #2



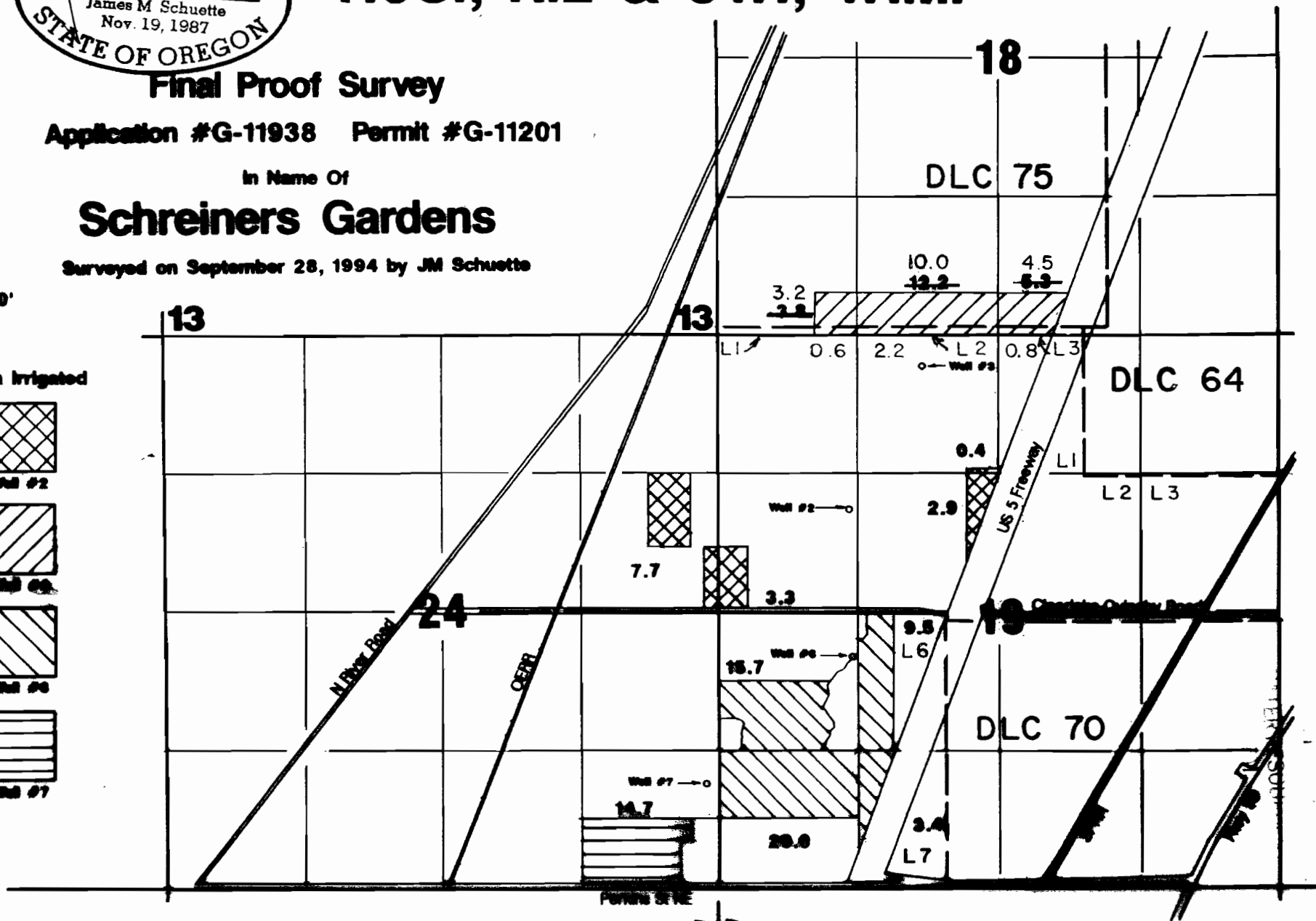
Well #3



Well #6



Well #7



Well #2 located 100'N & 1000'E from NW corner Section 19.
 Well #3 located 200'N & 1000'E from NW corner Section 19.
 Well #6 located 200'N & 1000'E from SW corner Section 19.
 Well #7 located 100'N & 50'W from SE corner Section 24.

AMENDED WRD-LN 11/3/08