

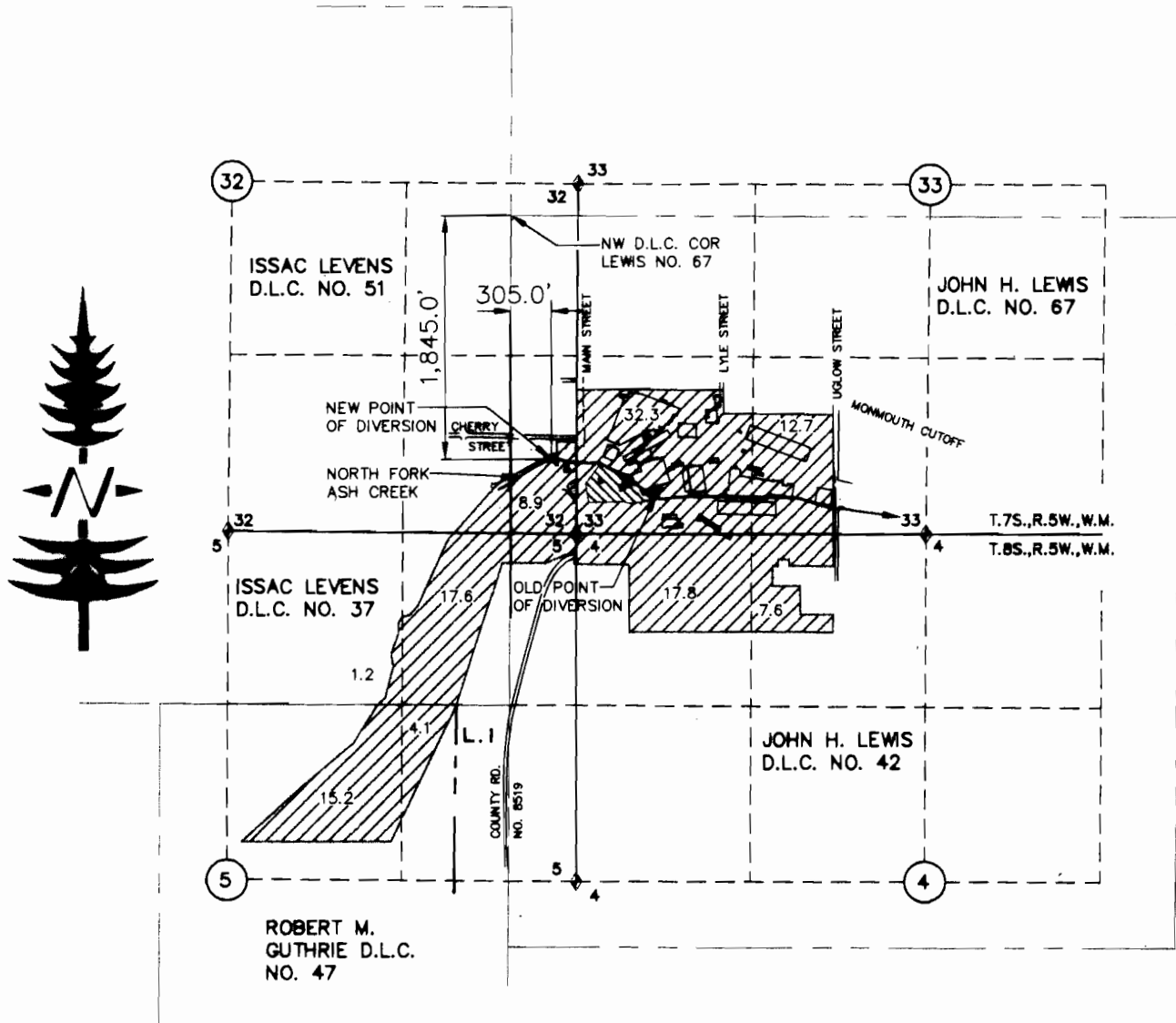
FINAL PROOF SURVEY
 UNDER
 TRANSFER 7516
 WILLAMETTE INDUSTRIES, INC.
 DALLAS, OREGON

RECEIVED

SEP 28 2001

WATER RESOURCES DEPT.
 SALEM, OREGON


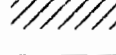



IN
 SECTIONS 32 & 33 T.7S.,R.5W.,W.M.
 SECTIONS 4 & 5 T.8S.,R.5W.,W.M.
 POLK COUNTY, OREGON
 SCALE: 1"= 1320'



ACREAGE SUMMARY

SECTION 4	NW 1/4, NW 1/4, 17.8 ACRES IN LEWIS D.L.C. 42
T.8S., R.5W., W.M.	NE 1/4, NW 1/4, 7.6 ACRES IN LEWIS D.L.C. 42
SECTION 5	SW 1/4, NE 1/4, 15.2 ACRES IN GUTHRIE D.L.C. 47
T.8S., R.5W., W.M.	SE 1/4, NE 1/4, 4.1 ACRES IN GUTHRIE D.L.C. 47
	NW 1/4, NE 1/4, 1.2 ACRES IN LEVENS D.L.C. 37
	NE 1/4, NE 1/4, 15.3 ACRES IN LEVENS D.L.C. 37
	NE 1/4, NE 1/4, 2.3 ACRES IN LEWIS D.L.C. 42
SECTION 32	SE 1/4, SE 1/4, 2.3 ACRES IN LEVENS D.L.C. 51
T.7S., R.5W., W.M.	SE 1/4, SE 1/4, 6.6 ACRES IN LEWIS D.L.C. 67
SECTION 33	SW 1/4, SW 1/4, 32.3 ACRES IN LEWIS D.L.C. 67
T.7S., R.5W., W.M.	SE 1/4, SW 1/4, 12.7 ACRES IN LEWIS D.L.C. 67

LEGEND

-  = ORIGINAL POND AREA
-  = PRESENT ACREAGE
-  = DONATION LAND CLAIM BOUNDARY
-  = SECTION LINES
-  = FORTY LINES

- NOTE: 1 - THE TOTAL ACREAGE BEING APPLIED FOR IS 117.4 ACRES.
 2 - AREAS SHOWN ARE IN ACRES.
 3 - DISTANCES SHOWN ARE IN FEET.
 4 - ACREAGES SHOWN ON THE MAP ARE FOR THE FORTY ACRE TRACT, SEE THE ACREAGE SUMMARY ABOVE FOR THE D.L.C. BREAKDOWN OF ACREAGES.

Qualified Water Right Examiner
 #170-1988
J. Edward Henricks
 J. Edward Henricks
 May 17, 1988
 STATE OF OREGON

I, J. EDWARD HENRICKS, BEING DULY SWORN AS A WATER RIGHT EXAMINER LICENSE NO. 170, HAVE PREPARED THIS MAP FOR WILLAMETTE INDUSTRIES INC. ON THIS 21st DAY OF SEPTEMBER, 2001. THE AREAS HATCHED REPRESENT THE ACREAGE BEING PUT TO BENEFICIAL USE AT THE TIME OF SURVEY.

PREPARATION OF THIS MAP IS FOR THE PURPOSE OF IDENTIFYING THE LOCATION OF THE WATER RIGHT ONLY AND HAS NO INTENT TO PROVIDE DIMENSIONS OR LOCATION OF PROPERTY OWNERSHIP LINES.

AMENDED 2/2/09 OWRB-LN
 SEPT. 26, 2001

ONLY DOCUMENTS STAMPED
 WITH RED INK ARE ORIGINALS

DAL-01-3201-P-01